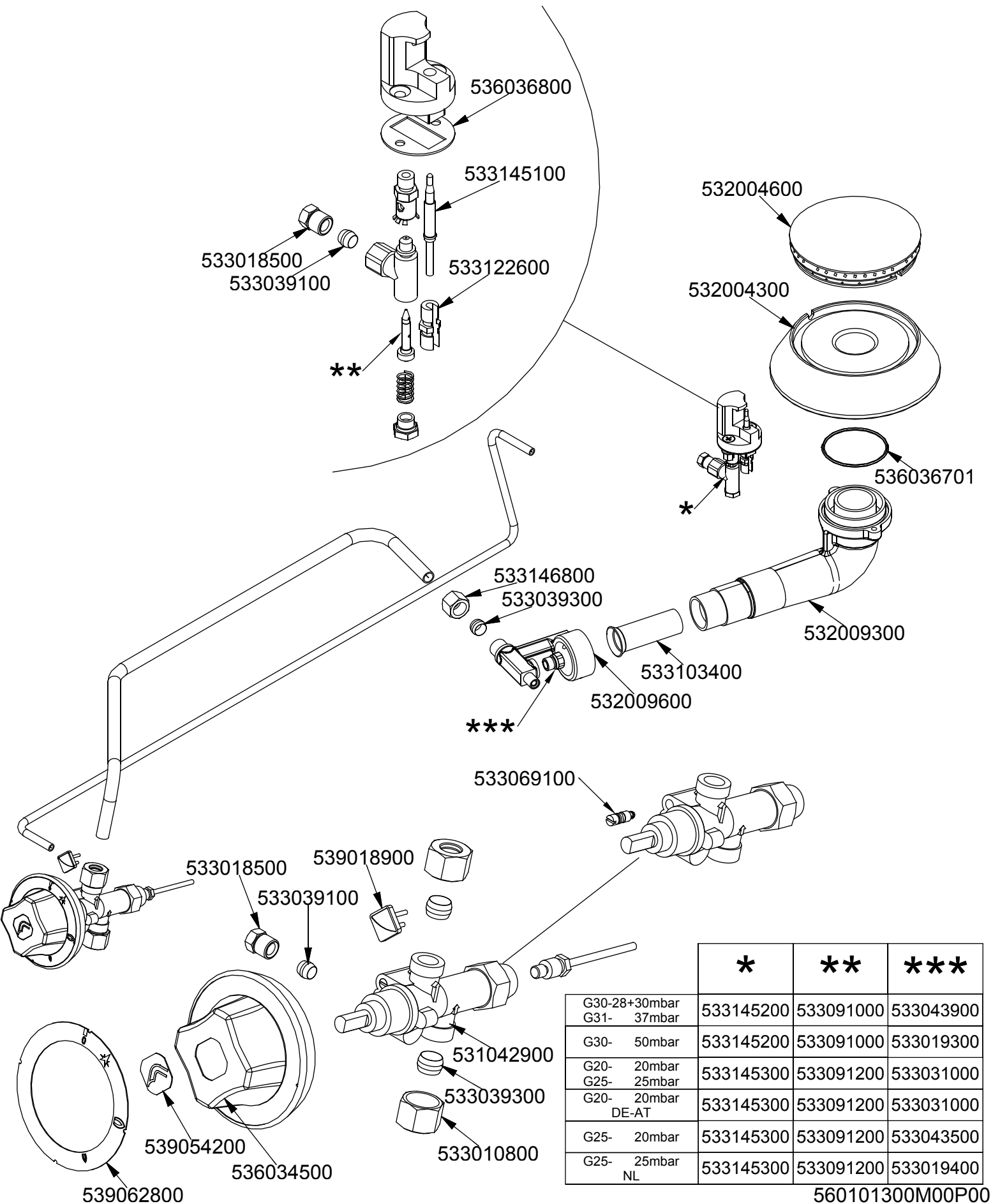


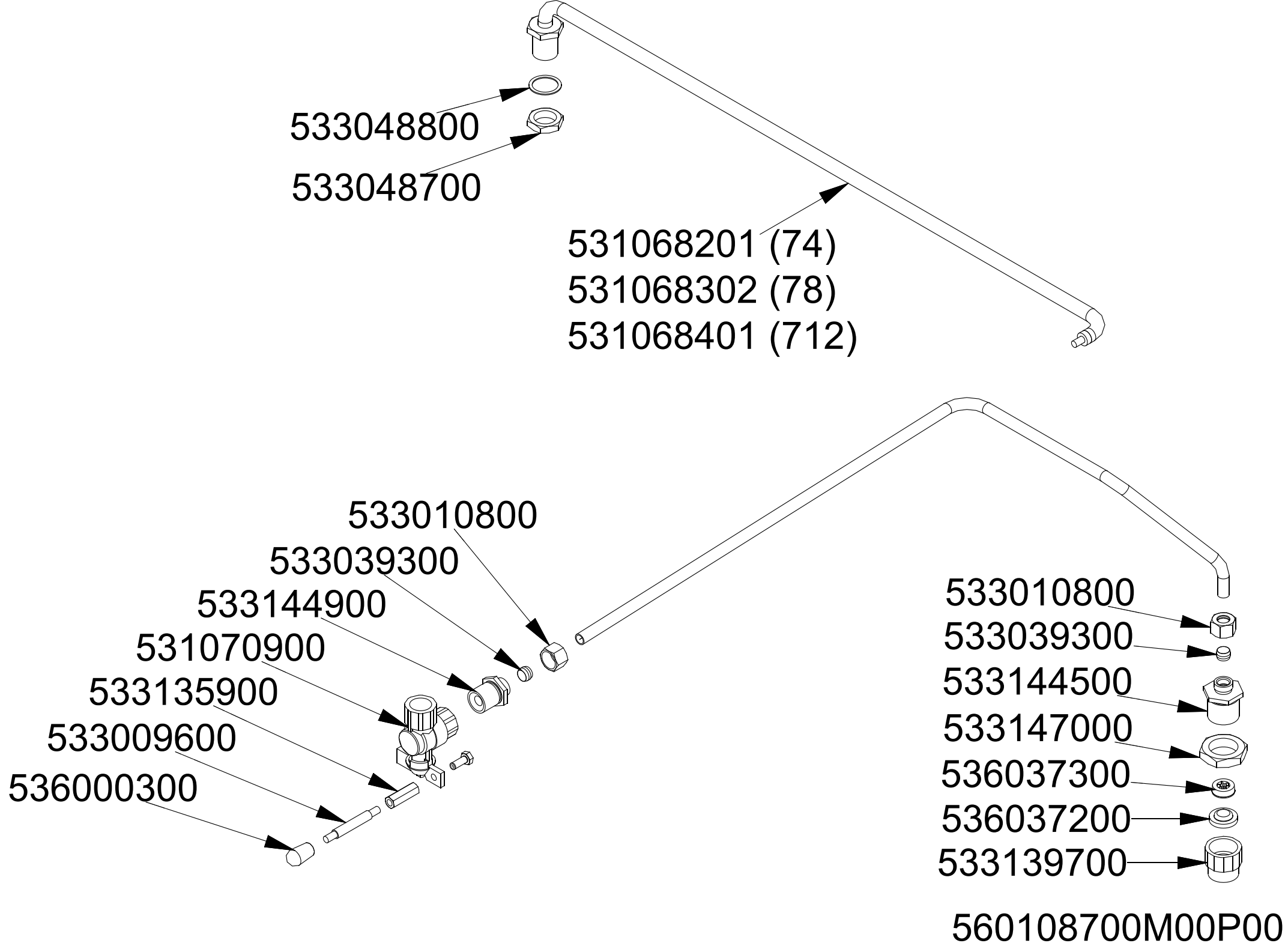
	*	**	***
G30-28+30mbar G31- 37mbar	533145200	533091000	533015200
G30- 50mbar	533145200	533091000	533030600
G20- 20mbar G25- 25mbar	533145300	533091200	533055100
G20- 20mbar DE-AT	533145300	533091200	533055100
G25- 20mbar	533145300	533091200	533055300
G25- 25mbar NL	533145300	533091200	533014500

560101400M00P00



	*	**	***
G30-28+30mbar	533145200	533091000	533043900
G31-37mbar	533145200	533091000	533019300
G30-50mbar	533145300	533091200	533031000
G20-20mbar	533145300	533091200	533031000
G25-25mbar	533145300	533091200	533031000
G20-20mbar DE-AT	533145300	533091200	533031000
G25-20mbar	533145300	533091200	533043500
G25-25mbar NL	533145300	533091200	533019400

560101300M00P00



Page	Pos	Code	Description
001		541134800	NEUTRAL LOW SPACER 712
001		541292100	OVERFLOW SET FOR PCA
001		531069700	2 BURNER GRID FOR PCA S70
001		541291900	UPPER PLATE S70 PCA-712G
001		533047700	SPACER GRID CW
001		541188601	CONTROL PANEL S607090 PCA-912G
001		544173500	LEFT SIDE PANEL S.70
001		544173400	RIGHT SIDE PANEL S.70
001		536005200	INOX LEG 2" 120-180 M10
002		532004700	BURNER COVER RING UR D128
002		532004400	BIG BURNER BODY 70LINE P.
002		536036701	BURNER GASKET PCA
002		532009600	BURNER VENTURI FITTING A3
002		533103500	AIR ADJUSTMENT BUSHING D22 EST.H57
002		532009400	BURNER VENTURI A3 8,5KW S90 PCA
002		536036800	GASKET FOR PILOT BURNER PCA
002		533145100	THERMOCOUPLE 750
002		533122600	FITTING THERMOCOUPLE M8X1 M9X1
002		533039100	BICONE §6
002		533018500	FITTING FOR BICONE D.6 M10*1
002		533039300	BICONE §10
002		533146800	BICONE FITTING §10 3/8G FEM.SABAF
002		533038800	75 BY-PASS FOR 21S TAP
002		539018900	INDEX FOR KNOB W/RED SIGN
002		531032000	GAS COCK P.V.BY-PASS Ø075
002		533010800	TUBE NUT D.10 M16*1,5
002		536034500	KNOB §77 4P. §08*6,5
002		539054200	STAMP Ø20,5 CR."L" LOTUS R.
002		539062800	RED STICKING DISK 72
002		533145200	PILOT UG.Ø20
002		533145300	PILOT UG.Ø35
002		533091000	NOZZLE 0.100 §20
002		533091200	PILOT NOZZLE 0100 Ø35 PIL.PC
002		533015200	NOZZLE §145 CH12*14 F-FP/CP6
002		533030600	NOZZLE §125 CH12*14
002		533055100	NOZZLE §215 CH12*14 L-CW4
002		533055300	NOZZLE §235 CH12*14
002		533014500	NOZZLE §225 CH12*14 OVEN GN 2/1
003		536036800	GASKET FOR PILOT BURNER PCA
003		533145100	THERMOCOUPLE 750
003		533018500	FITTING FOR BICONE D.6 M10*1
003		533039100	BICONE §6
003		533122600	FITTING THERMOCOUPLE M8X1 M9X1
003		532004600	BURNER COVER RING R D104
003		532004300	MIDDLE BURNER BODY 70LINE P.
003		536036701	BURNER GASKET PCA
003		532009300	BURNER VENTURI 5,5KW
003		533146800	BICONE FITTING §10 3/8G FEM.SABAF
003		533039300	BICONE §10
003		533103400	AIR ADJUSTMENT BUSHING D20 EST.H57
003		532009600	BURNER VENTURI FITTING A3

Page	Pos	Code	Description
003		533069100	BY PASS COCK §60 20S
003		539018900	INDEX FOR KNOB W/RED SIGN
003		531042900	B.PASS §60 SAFETY COCK PC/CF 90
003		533010800	TUBE NUT D.10 M16*1,5
003		536034500	KNOB §77 4P. §08*6,5
003		539054200	STAMP Ø20,5 CR."L" LOTUS R.
003		539062800	RED STICKING DISK 72
003		533145200	PILOT UG.Ø20
003		533145300	PILOT UG.Ø35
003		533091000	NOZZLE 0.100 §20
003		533091200	PILOT NOZZLE 0100 Ø35 PIL.PC
003		533043900	NOZZLE §115 CH12*14 F-CW4
003		533019300	NOZZLE §100 G-FQ5 F-CW
003		533031000	NOZZLE §175 CH12X14
003		533043500	NOZZLE §190 CH12*14 G25 PC4R
003		533019400	NOZZLE §180 CH12*14 L-FQ5
004		533048800	GASKET §30*§21*2 FIBRE
004		533048700	NUT 1/2G ZN
004		531068201	ASS.RACC.CA.H2O 1/2G PCA-74/94
004		531068302	ASS.RACC.CA.H2O 1/2G PCA-78/98
004		531068401	ASS.RACC.CA.H2O 1/2G PCA-712/912
004		533010800	TUBE NUT D.10 M16*1,5
004		533039300	BICONE §10
004		533144900	MALE FITTING WATER INLET M16X1,5
004		531070900	BALL VALVE 90° 1/2G F/F PCA
004		533009600	DRAIN COCK HANDLE
004		536000300	FIXED GRIP D.15*25*M6
004		533144500	FITTING FOR WATER INPUT 3/4G
004		533147000	BICONE FITTING 3/4G ZN
004		536037300	WATER REGULATOR 3/4 4LT-MIN
004		536037200	GASKETØ24,0XØ15,0X4,0
004		533139700	EXTENSION 3/4G M/F L14