

# WAREWASHER

ELECTRONICAL SWITCHES  
SIMPLE BODY VERSION  
LOWER AND UPPER WASHING

TYPE: 19ER

Accessories  
BOOSTER PUMP  
DVGW  
DETERGENT DISPENSER  
DRAIN PUMP

---

## Spare parts

---



# Parti di ricambio Spare Parts Catalogues pièces

## INFORMAZIONI GENERALI

Questo catalogo serve per richiedere con esattezza le parti di ricambio

Nelle ordinazioni indicare:

1) il numero dei codici dei particolari seguito dalla descrizione e la quantità desiderata;

2) Il codice alfa-numerico presente nella seconda colonna della tabella ;

**I disegni delle parti di ricambio sono solo indicativi e non rappresentano il pezzo in oggetto.**

**I dati contenuti in questo catalogo sono indicativi e possono essere soggetti a modifiche senza impegno di preavviso.**

## ALLGEMEINE INFORMATIONEN

Dieser Ersatzteilkatalog dient zur genauen Angabe der Teile bei Ersatzteilbestellungen.

Bei Ersatzbestellung ist folgendes anzugeben:

1) Die Bestellnummer der Ersatzteile mit der entsprechenden Beschreibung genaue Menge;

2) Der alpha-numerischer Code auf der zweiten Reihe in dein Sculd;

**Die Zeichnungen der Ersatzteile sind nur als Hinweise gedacht und stellen nicht das betroffene Teil dar.**

**Bei den im Katalog angeführten Daten handelt es sich um Anhaltsdaten, die jederzeit, ohne Vorankündigung, geändert werden können.**

## GENERAL INFORMATION

The present spare parts order exactly the right spare parts

When ordering specify:

1) the part's code number followed by its description and quantity needed;

2) The alpha-numeric code is in the second column in the chart;

**Spare parts drawings are general and do not represent the part.**

**The contents of this catalogue are general and can undergo changes without prior notice.**

## INFORMACIONES GENERALES

El presente catálogo sirve para pedir con exactitud las partes de repuesto

En los pedidos se debe indicar:

1) el número de código de la parte y a continuación la descripción cantidad deseada;

2) El código alfanumerico presente en la segnada columna de la tabla;

**Los diseños de las partes de recambio son solo indicativos y no representan la pieza en cuestión.**

**Los datos contenidos en el presente catálogo son indicativos y pueden modificarse sin aviso previo.**

## INFORMATIONS GENERALES

Ce catalogue permet de commander correctement les pièces détachées

Les commandes doivent être passées en indiquant:

1) le numero de code des pièces dééectachées suivi de leur description quantité désirée;

2) le code alphanumérique dans la deuxième colonne du tableau;

**Les plans des pièces détachées sont fournis seulement à titre indicatif et ne représentent pas la pièce concernée.**

**Les données de ce catalogue sont citées seulement à titre indicatif et peuvent être l'objet de modifications sans avis préalable.**

## ESEMPIO EXAMPLE EXEMPLE BEISPIEL

Rif.	Codici
MODULE:Particolari	
10505	540903
10510	540908
10515	15065/A
10520	540086
10525	540028



### Note

Tutte le informazioni riportate si intendono aggiornate alla data di stampa. Il Produttore si riserva il diritto di apportare qualsiasi modifica richiesta dallo sviluppo evolutivo dei suddetti prodotti.

Per la sicurezza, la garanzia, l'affidabilità ed il valore della lavastoviglie usa solo ricambi originali. **Per alcuni codici, sono richieste quantità minime d'ordine.**



### Attenzione

Questo libretto è parte integrante della lavastoviglie e, in caso di passaggio di proprietà, deve essere consegnato al nuovo acquirente.



### Remarque

Toutes les informations contenues dans ce manuel s'entendent mises à jour à la date d'impression. En raison du développement constant de ses produits, usine se réserve le droit d'apporter à tout instant les modifications qu'elle jugera utiles.

Pour la sécurité, la garantie, la fiabilité et la valeur de votre lavevaisselles n'utilisez que des pièces de rechange d'origine. **Pour quelque référence on demande un minimum de pièces par commande**



### Attention

Ce manuel doit être considéré comme partie intégrante de la lavevaisselles, en cas de transfert de propriété, doit toujours être remis au nouveau propriétaire.



### Note

The information contained herein is valid at the time of going to print. The Company reserves the right to make any changes required by the future development of the above-mentioned products.

For your safety, as well as to preserve the warranty reliability and worth of your dishwashers, use original spare parts only. **For some codes a minimum quantity for order is required.**



### Warning

This manual forms an integral part of the dishwashers and - if a transfer of title occurs - must always be handed over to the new owner.



### Hinweis

Die Der Hersteller behält sich das Recht vor, jegliche, durch eine Weiterentwicklung der genannten Produkte bedingte Änderungen vornehmen zu können.

Verwenden Sie für Ihre Sicherheit, die Garantie, die Zuverlässigkeit und den Wert Ihrer machine originale Ersatzteile. **Für bestimmte Code nummer werden mindesten bestellungen verlangt.**



### Achtung

Diese Betriebsanleitung ist Bestandteile des machine und muss bei seinem Weiterverkauf dem neuen Besitzer ausgehändigt werden.

## 1. Spare parts

<b>General body parts.....</b>	<b>7</b>
<b>Lockup system .....</b>	<b>9</b>
<b>LP4E Control panel and switches.....</b>	<b>11</b>
<b>Electric control components.....</b>	<b>13</b>
<b>Solenoid valve group .....</b>	<b>15</b>
<b>Booster pump.....</b>	<b>17</b>
<b>DVGW .....</b>	<b>19</b>
<b>Rinse aid dispenser group.....</b>	<b>21</b>
<b>Boiler group .....</b>	<b>23</b>
<b>3 ways connection .....</b>	<b>25</b>
<b>Wash pump .....</b>	<b>27</b>
<b>Dosing detergent group.....</b>	<b>29</b>
<b>Dosing detergent group.....</b>	<b>31</b>
<b>Drain pump group.....</b>	<b>33</b>
<b>Pressure switch group with air trap ...</b>	<b>35</b>
<b>Turret group with rotating arms .....</b>	<b>37</b>

**Turret group with rotating arms .....39**

## 1.1 Voltage codes

Voltage code	Voltage
A	3/N/PE~400/230V 50Hz
B	~250V 16A 50Hz
C	3/N/PE~380/220V 50Hz
D	3/PE~200V 50-60Hz
F	2/PE 220-240V 50Hz
G	3/N/PE~415/240V 50Hz
H	3/PE~230V 50Hz
I	3/PE~220V 60Hz
J	3/PE~380 50Hz
K	3/PE~400V 50Hz
L	3/PE~415V 50Hz
M	3/PE~440V 60Hz
N	3/PE~460V 60Hz
O	3/PE~480V 60Hz
P	1/N/PE~220-240V 50Hz
R	2/PE~220-230V 60Hz
S	3/N/PE~400/230V 50Hz
T	3/PE~230V 60Hz

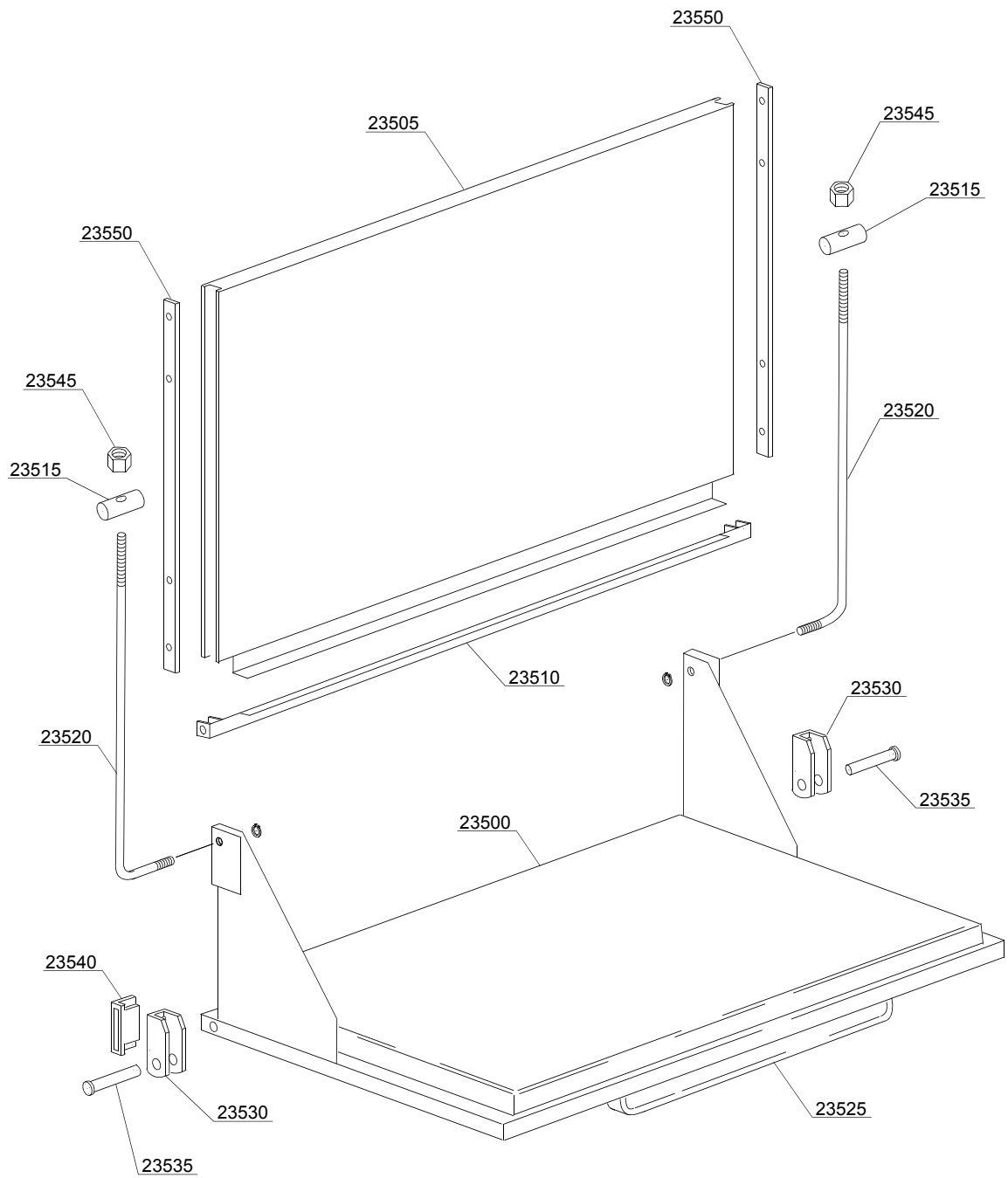
## 1.2 Product codes

Product code	Full name
Model codes	
e	ELECTRONICAL SWITCHES
mc	SIMPLE BODY VERSION
dc	DOUBLE BODY VERSION
Type codes	
19ER	19ER
Accessory codes	
pap	BOOSTER PUMP
dvgw	DVGW
dde	DETERGENT DISPENSER
ps	DRAIN PUMP



## Spare parts

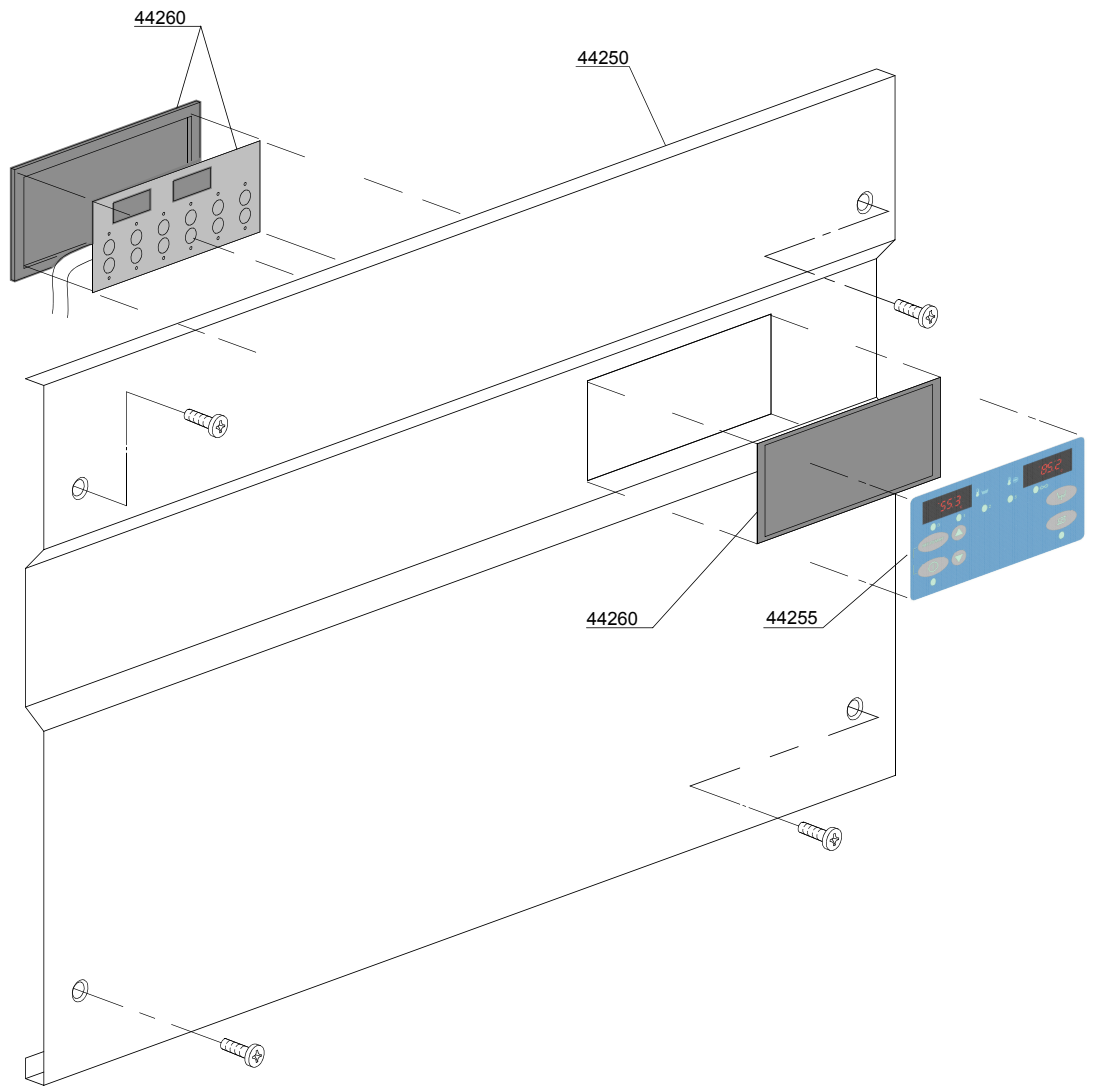
ID	P-code	Model	Type	Accessory	Voltage	Description
MODULE:General body parts						
22600	88907		19ER			Back panel
22605	88900		19ER			Body
22610	88301		19ER			Tank back filter
22615	88300		19ER			Tank front filter
22620	88302		19ER			Filter basket
22625	80931		19ER			Chimney splash guard
22630	88922		19ER			Upper door splash guard
22635	80936		19ER			Right splash guard
22640	80937		19ER			Left splash guard
22645	88912		19ER			Right internal slide
22650	88911		19ER			Left internal slide
22655	88901		19ER			Tank
22660	88902		19ER			Base
22665	88903		19ER			Right lower panel
22670	88904		19ER			Left lower panel
22675	80116		19ER			"Foot 2" M65 "
22680	15613		19ER			"Elbow 1" ""
22685	C109		19ER			Stainless steel basket with wheels
22690	30001010		19ER			6/6,53KW 230/240/3 heating element
22695	88114		19ER			Plug 12 mm
22700	80230		19ER			Reed-holder
22705	2000309		19ER			Sensor
22710	10200171		19ER			Gasket 17x25x2
22715	22214		19ER			Nut
22720	11600019		19ER			Terminal overflow pipe
22725	88942		19ER			Overflow pipe
22730	11600002		19ER			Flange O-ring



02\_121\_e

## Spare parts

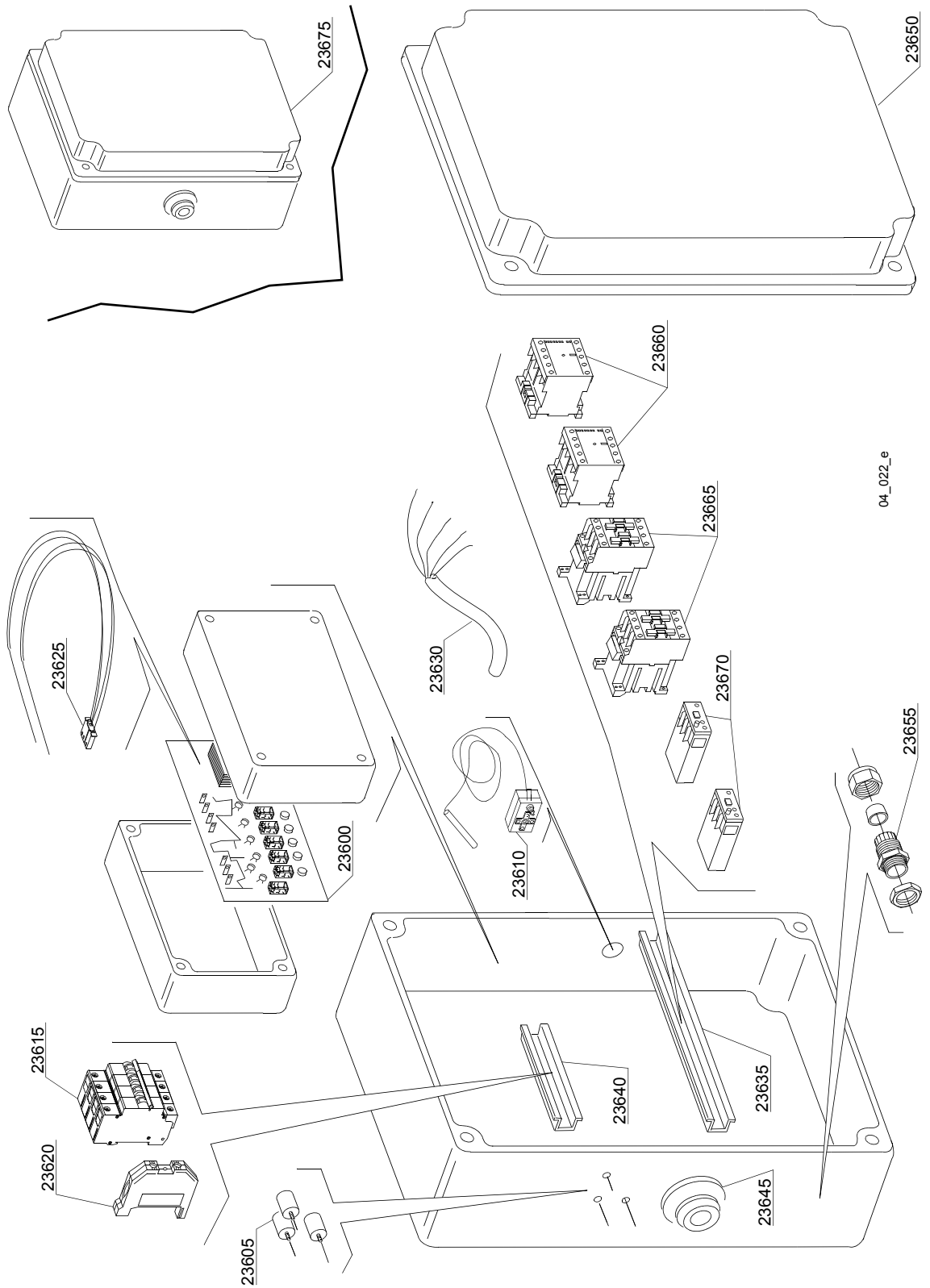
ID	P-code	Model	Type	Accessory	Voltage	Description
MODULE:Lockup system						
23500	88910		19ER			Door with steel handle
23505	88909		19ER			Upper door
23510	88928		19ER			Levers support
23515	22219		19ER			Pin
23520	22220		19ER			Door rod
23525	80750		19ER			Handle
23530	22206/B		19ER			Door hinge
23535	22220/A		19ER			Pin for door
23540	80232		19ER			Door magnet
23545	11721		19ER			Nut
23550	80700		19ER			Door guide



03\_051\_e

## Spare parts

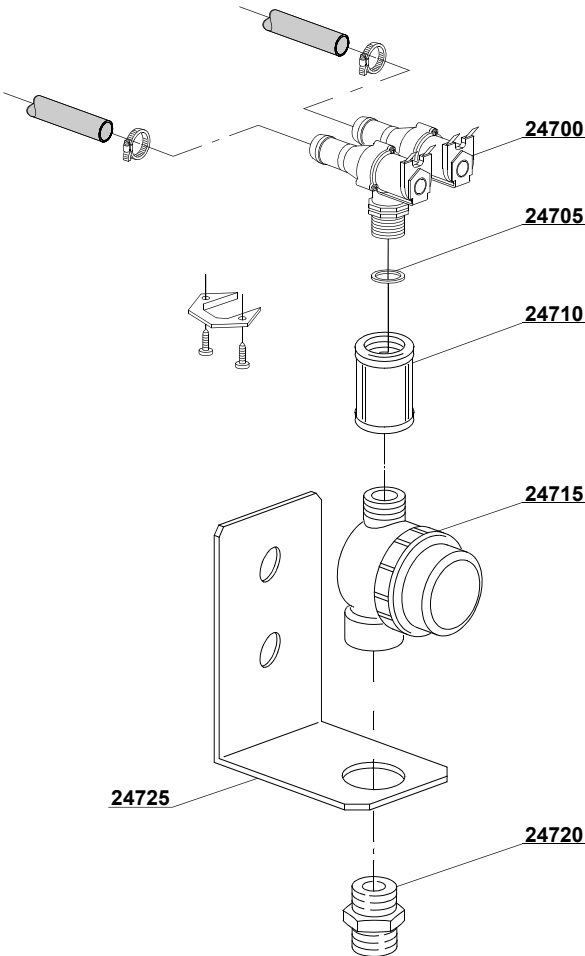
ID	P-code	Model	Type	Accessory	Voltage	Description
MODULE:LP4E Control panel and switches						
44250	88944		19ER			Stainless steel control panel
44255	50571		19ER	dp,ws		Silkscreen processed grill membrane push button-driven dp+ws
44255	50572		19ER			Silkscreen processed grill membrane push button-driven
44255	50575		19ER	dp,ws		Neutral Silkscreen processed grill membrane push button-driven dp+ws
44255	50576		19ER			Neutral Silkscreen processed grill membrane push button-driven
44255	50578		19ER	dp,ws		Silkscreen processed grill membrane push button-driven dp+ws
44255	50579		19ER			Silkscreen processed grill membrane push button-driven
44255	50577		19ER	dp,ws		Bobek Silkscreen processed grill membrane push button-driven dp+ws
44260	50570		19ER			Complete membrane push button-driver
44260	50570/A		19ER			LP Complete membrane push button-driver L=1500



04\_022\_e

## Spare parts

ID	P-code	Model	Type	Accessory	Voltage	Description
MODULE:Electric control components						
23600	50569		19ER		A	Electronic card without chip
23605	15149		19ER			Filter F3
23610	2000430		19ER			Thermostat
23615	2000411		19ER			Automatic fuse C32
23620	10300401		19ER			Clamp
23625	50562		19ER			Sensor
23630	80200		19ER			Power supply cable 5x4x3400
23630	75359		19ER			4x6 flame-retardant cable
23635	80408		19ER			L=345mm slide
23640	80409		19ER			L=140mm slide
23645	80417		19ER			Lead through rubber
23650	80407		19ER			Plastic box
23655	80414		19ER			Cable-press
23655	80415		19ER			Cable-press
23655	80416		19ER			Cable-press
23665	10300050		19ER			Contacteur 25A/12A 4NA 230V
23670	88112		19ER			4,5-7,5A RF9 temperature relay
23675	88100/A		19ER			Complet electric box
23675	88100		19ER			Complet electric box



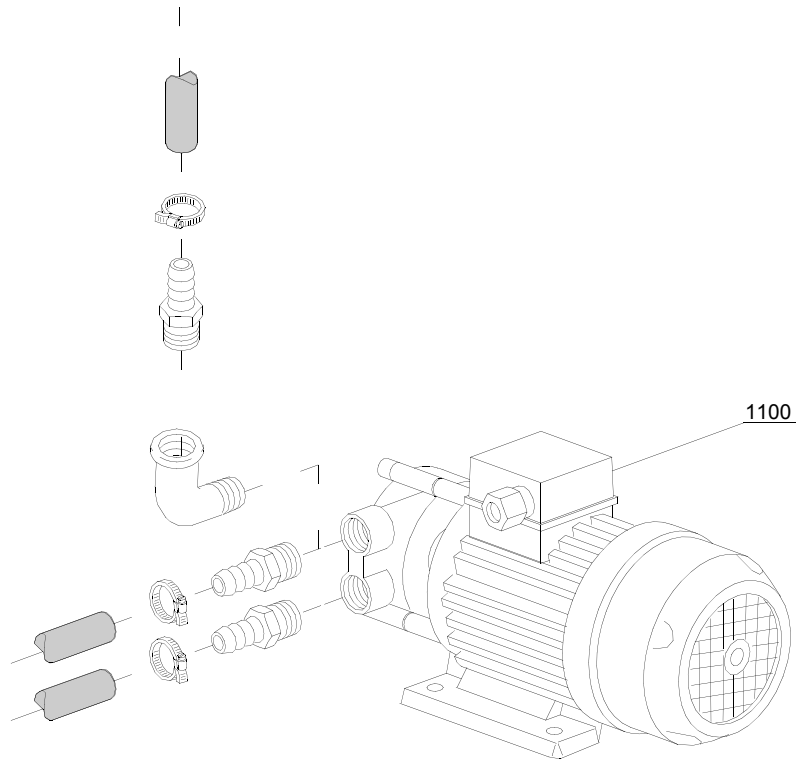
05\_006\_e

## Spare parts

---

ID	P-code	Model	Type	Accessory	Voltage	Description
MODULE: Solenoid valve group						
24700	30001001		19ER			Solenoid valve
24705	N.C.		19ER			Pression reducing valve
24710	80275		19ER			Pipe coupling
24715	2000121		19ER			Filter
24720	12025		19ER			Coupling
24725	22236		19ER			Support

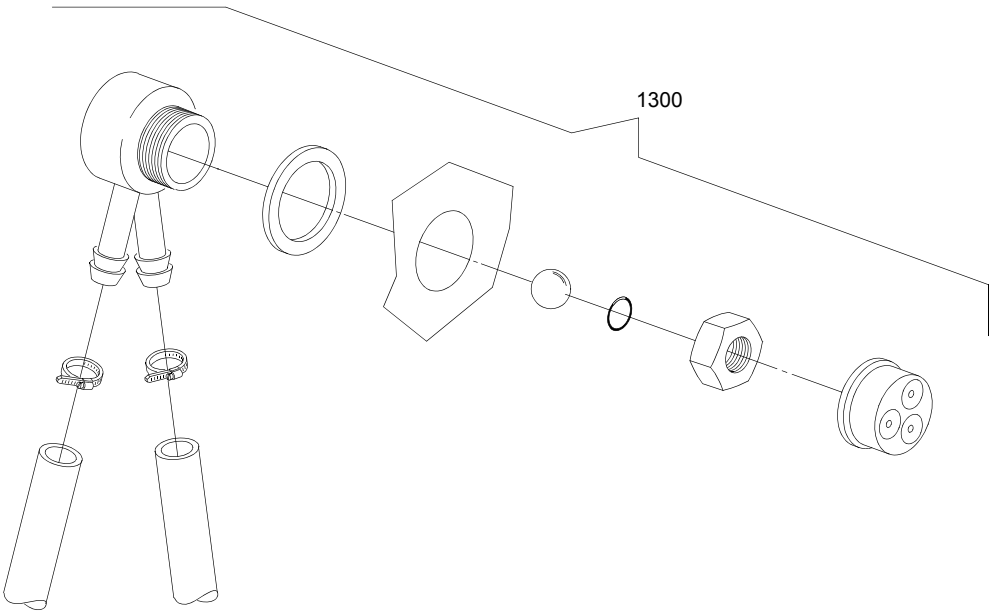
07\_002\_e



**Spare parts**

---

ID	P-code	Model	Type	Accessory	Voltage	Description
MODULE:Booster pump						
1100	15100		19ER	bp		Booster pump 230V

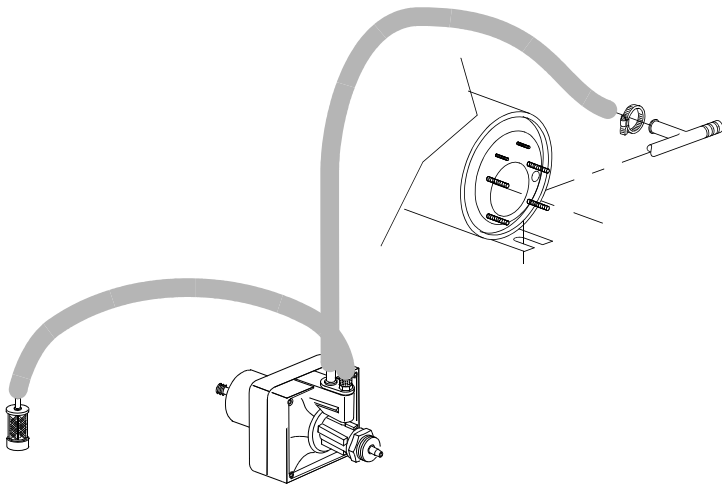
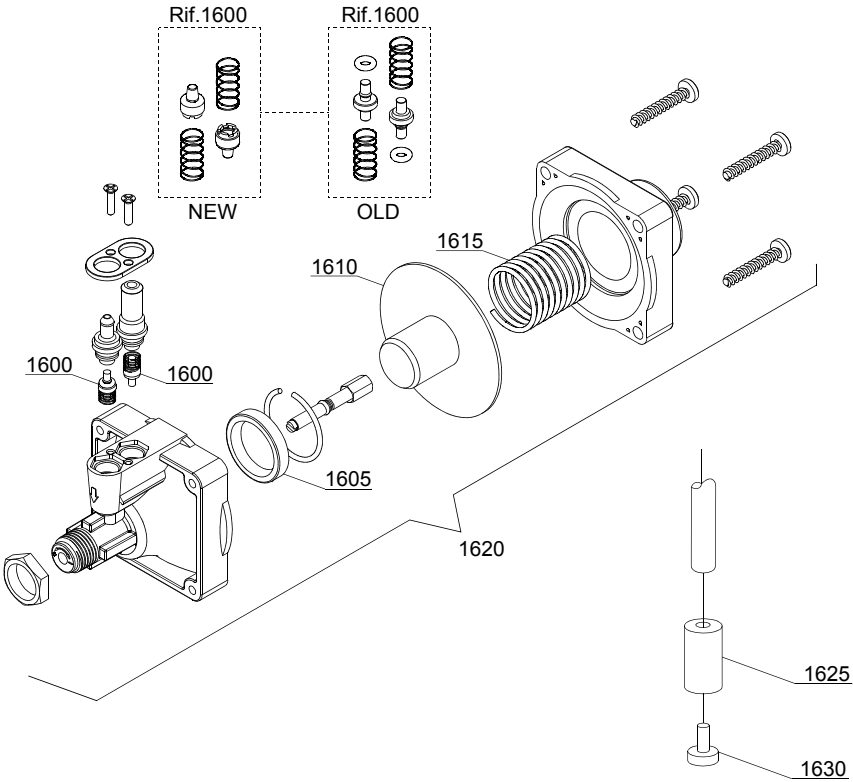


08\_005\_e

**Spare parts**

---

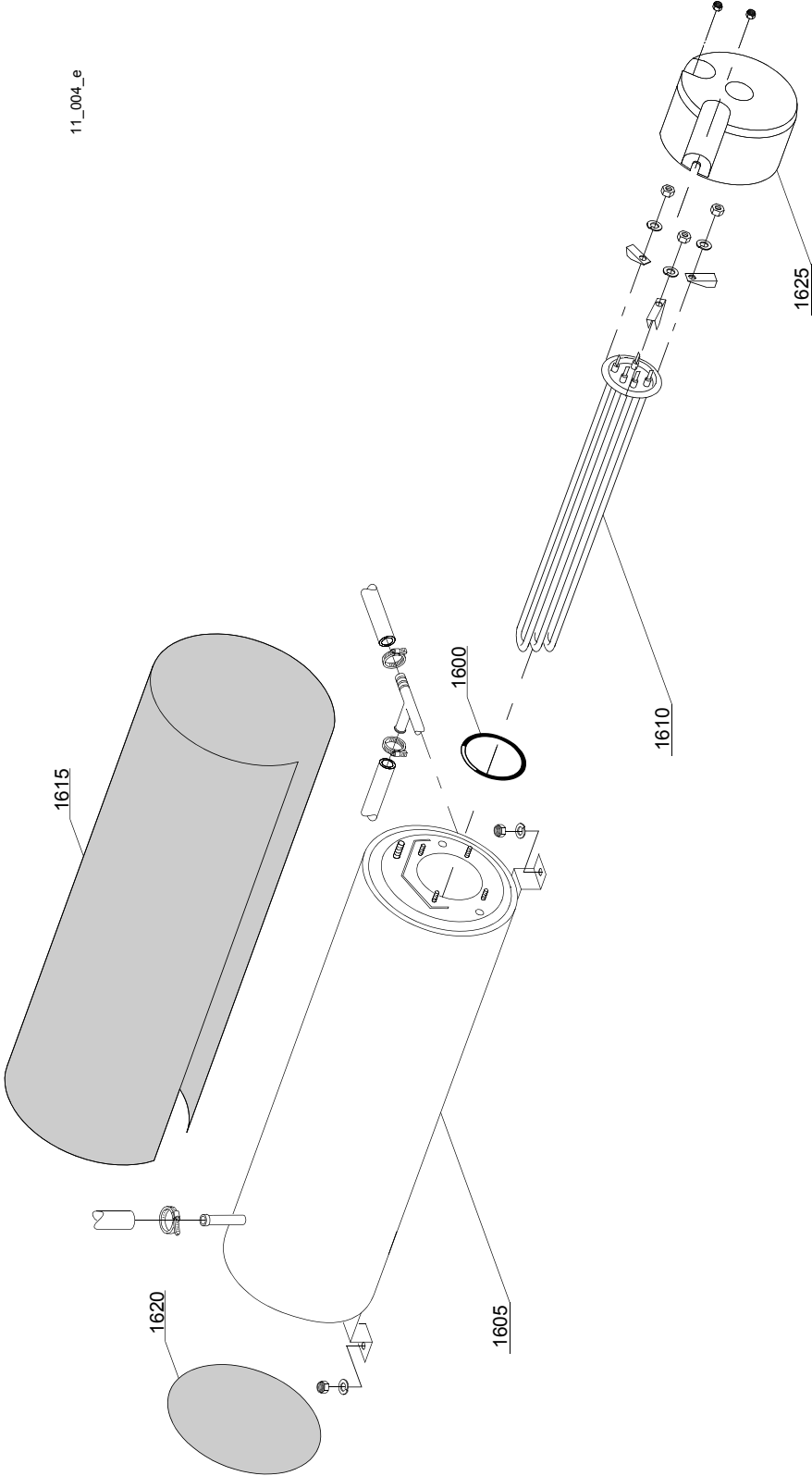
ID	P-code	Model	Type	Accessory	Voltage	Description
MODULE:DVGW						
1300	999900006		19ER	dvgw		DVGW assembly



10\_003\_e

## Spare parts

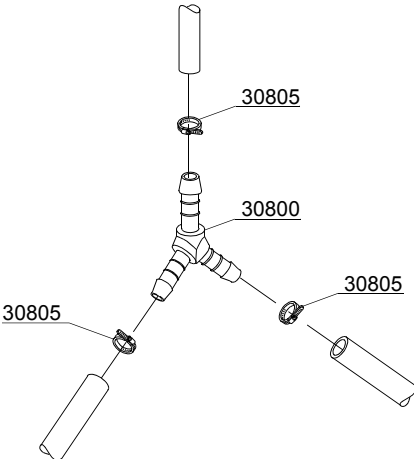
ID	P-code	Model	Type	Accessory	Voltage	Description
MODULE: Rinse aid dispenser group						
1600	10805		19ER			Tecnopro non return valve
1605	10806		19ER			Ø22 O-ring
1610	10807		19ER			Membrane
1615	10808		19ER			Spring
1620	10599999		19ER			Rinse aid pump
1625	12525		19ER			Counter-weight
1630	15058		19ER			Suction filter



## Spare parts

---

ID	P-code	Model	Type	Accessory	Voltage	Description
MODULE:Boiler group						
1600	13015		19ER			Gasket OR 6225
1605	80905		19ER			Boiler
1610	30001011		19ER			Heating element 9 kW
1610	30001011/A		19ER			12/13,07KW 230/240V 3 heating element
1615	30002030		19ER			Insulation boiler
1620	75205		19ER			Ø160 end piece
1625	75311		19ER			Casing

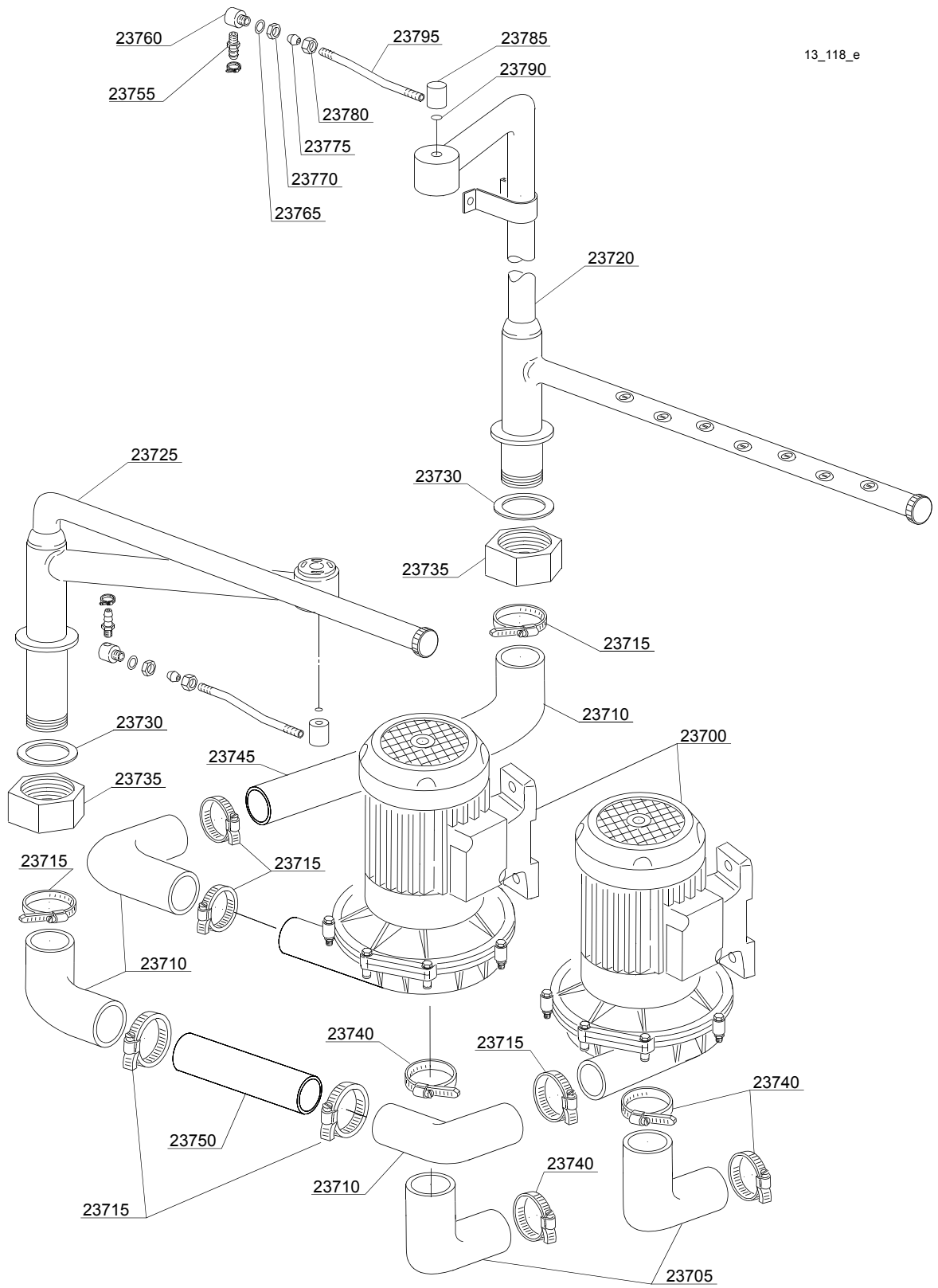


12\_003ae

**Spare parts**

---

ID	P-code	Model	Type	Accessory	Voltage	Description
MODULE:3 ways connection						
30800	540091		19ER			Ø12 mm plastic 3 ways connection
30805	11807		19ER			Clamp 12-22

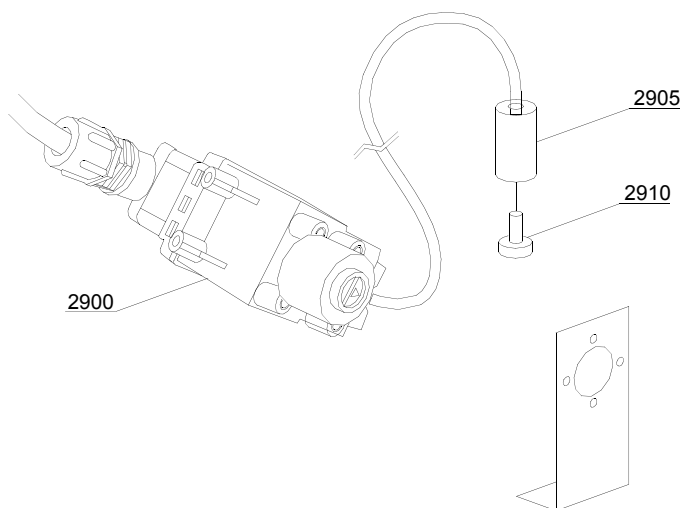
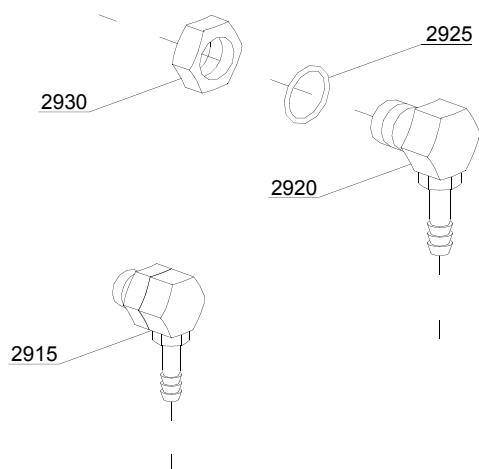


13\_118\_e

## Spare parts

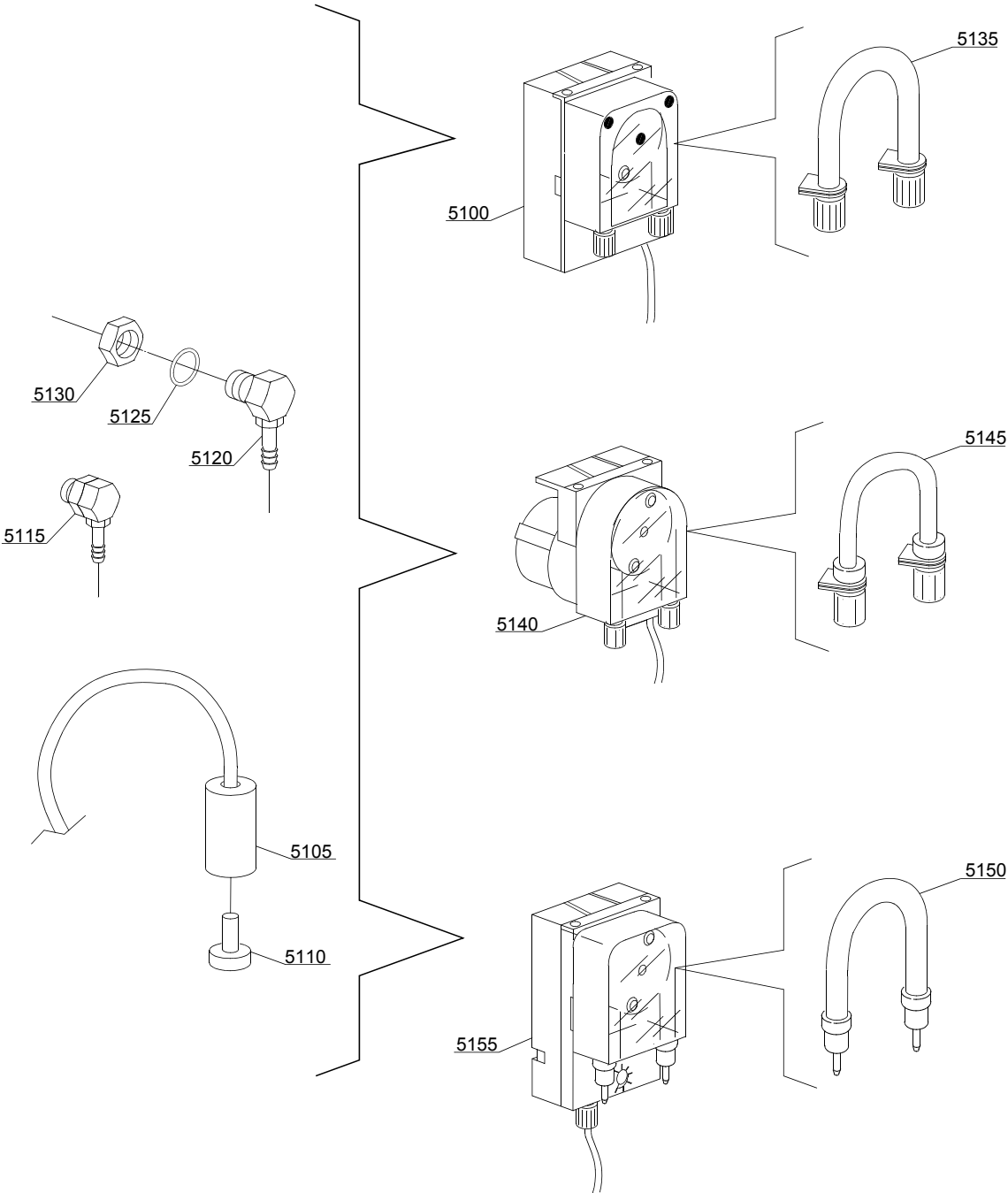
ID	P-code	Model	Type	Accessory	Voltage	Description
MODULE:Wash pump						
23700	88106		19ER			2,7Hp wash pump
23705	3002020		19ER			Suction elbow
23710	15032/B		19ER			Suction pipe coupling
23715	11824		19ER			50/70 clamp
23720	88121		19ER			Top wash ramp
23725	88122		19ER			Lower wash ramp
23730	10200173/A		19ER			O-ring
23735	88127		19ER			Ramp fixing nut
23740	2902491		19ER			Clamp 60-80
23745	88123		19ER			63,5x90mm Pipe coupling
23750	88124		19ER			75x130mm pipe coupling
23755	12005		19ER			Rubber holder
23760	80231		19ER			Pipe fitting
23765	10200171		19ER			Gasket 17x25x2
23770	10200101		19ER			Nut
23775	10200182		19ER			Cone
23780	10600016		19ER			Nut
23785	10600202		19ER			Coupling
23790	13009		19ER			OR 2050 NBR O-ring
23795	88118		19ER			Upper rinse duct

14\_002\_e



## Spare parts

ID	P-code	Model	Type	Accessory	Voltage	Description
MODULE:Dosing detergent group						
2900	15108/L		19ER	dd		Lang detergent pump
2905	12525		19ER	dd		Counter-weight
2910	15058		19ER	dd		Suction filter
2915	15123		19ER	dd		Compleat plastic injector
2920	15148		19ER	dd		Steel injector
2925	15159		19ER	dd		OR O-ring
2930	10200205		19ER	dd		Nut m12x1

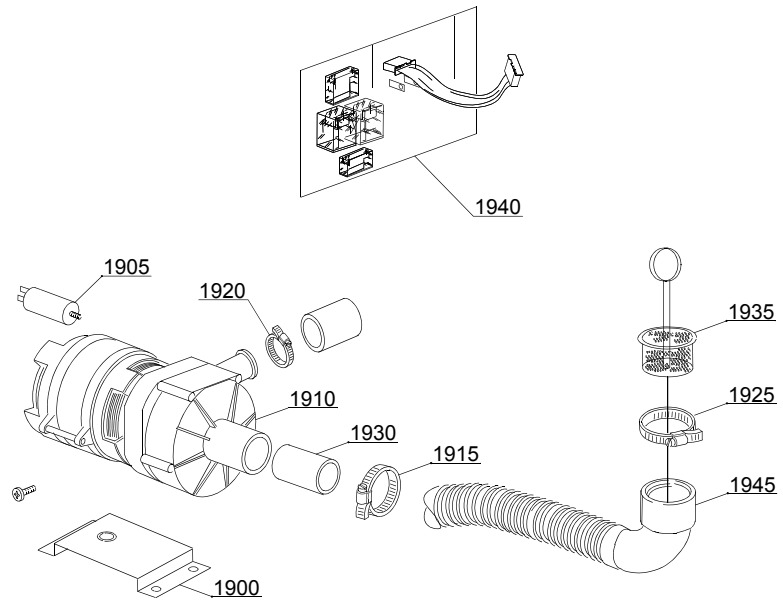


14\_004\_e

## Spare parts

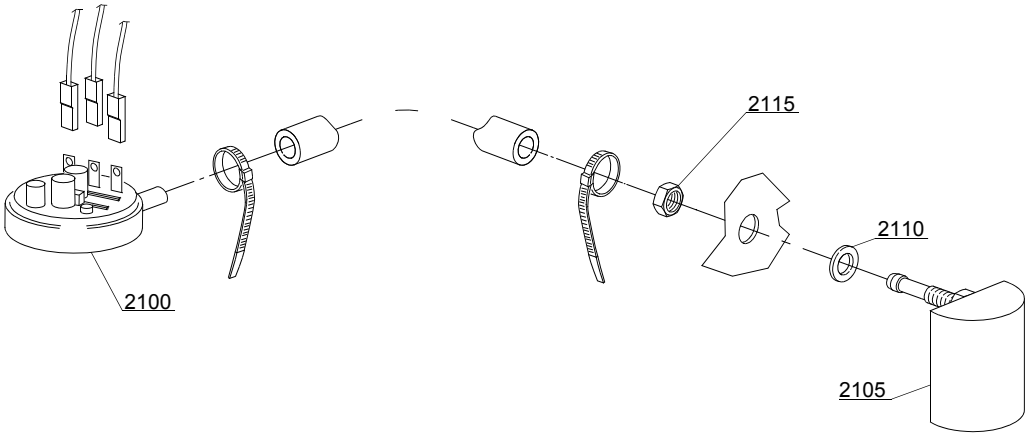
ID	P-code	Model	Type	Accessory	Voltage	Description
MODULE:Dosing detergent group						
5100	15985		19ER	sd,i,dd		Seko detergent pump
5105	12525		19ER	sd,i,dd		Counter-weight
5110	15058		19ER	sd,i,dd		Small filter
5115	15123		19ER	sd,i,dd		Compleat plastic injector
5120	15148		19ER	sd,i,dd		Steel injector
5125	15159		19ER	sd,i,dd		OR O-ring
5130	10200205		19ER	sd,i,dd		Nut m12x1
5135	15185		19ER	sd,i,dd		Ø 10 Seko thermoplastic pipe
5140	15985		19ER	sd,i,dd		Germac detergent pump
5145	15108/E		19ER	sd,i,dd		Ø 8 Germac thermoplastic pipe
5150	15985/A		19ER	sd,i,dd		Ø 10 PLAS CONT thermoplastic pipe
5155	15985		19ER	sd,i,dd		PLAS CONT detergent pipe

15\_003\_e



## Spare parts

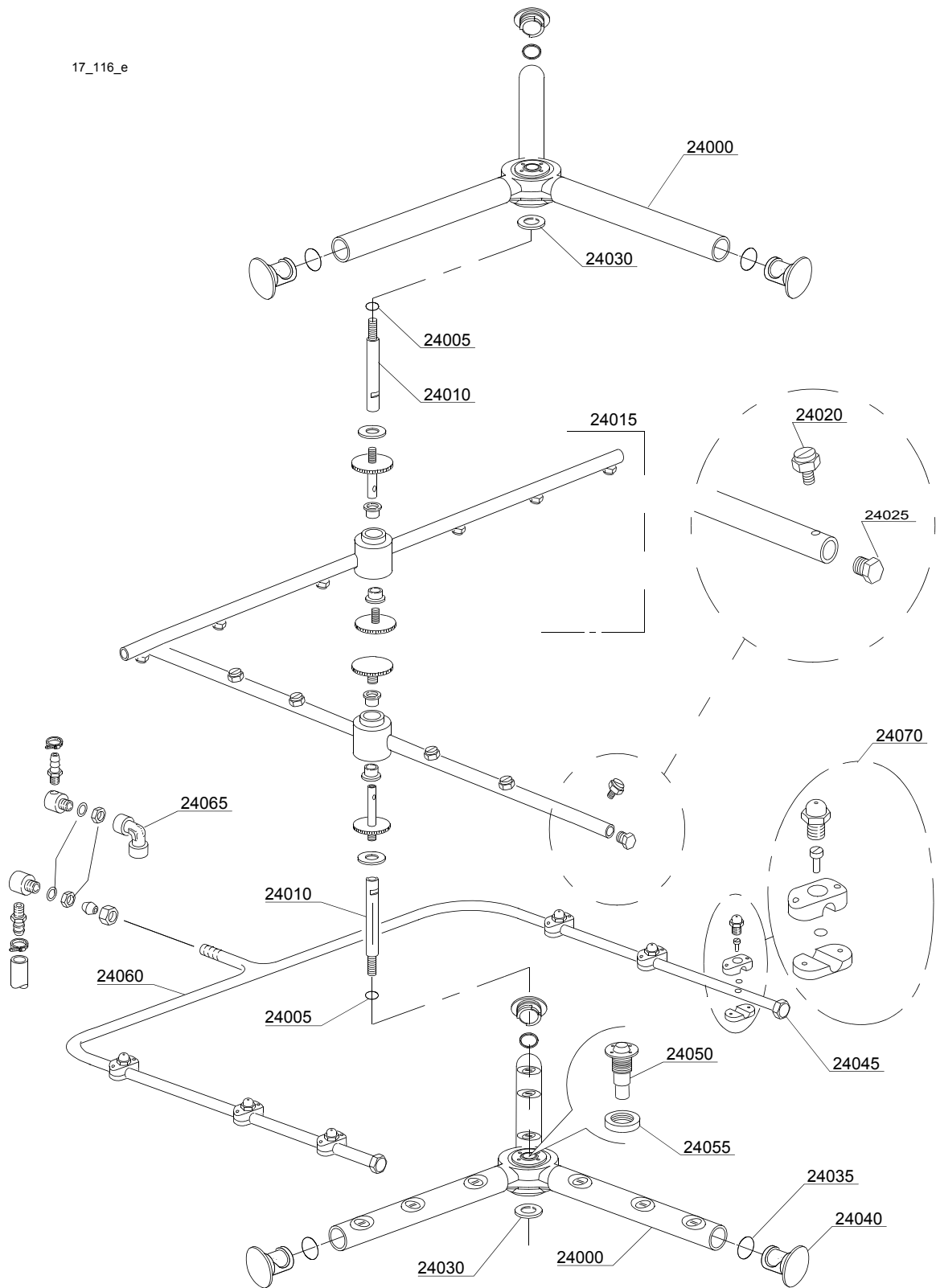
ID	P-code	Model	Type	Accessory	Voltage	Description
MODULE: Drain pump group						
1900	440122		19ER	dp		Pump support
1905	10702		19ER	dp		5 Uf Condenser
1910	10501/A		19ER	dp		190W 230V drain pump
1915	11806		19ER	dp		25/40 clamp
1920	11836		19ER	dp		20/32 clamp
1925	11809		19ER	dp		30/45 clamp
1930	18044		19ER	dp		Ø28 top wash pipe
1935	10200039		19ER	dp		Flow drain filter
1940	50567		19ER	dp		Relay card
1945	11600050		19ER	dp		Suction pipe



16\_001\_e

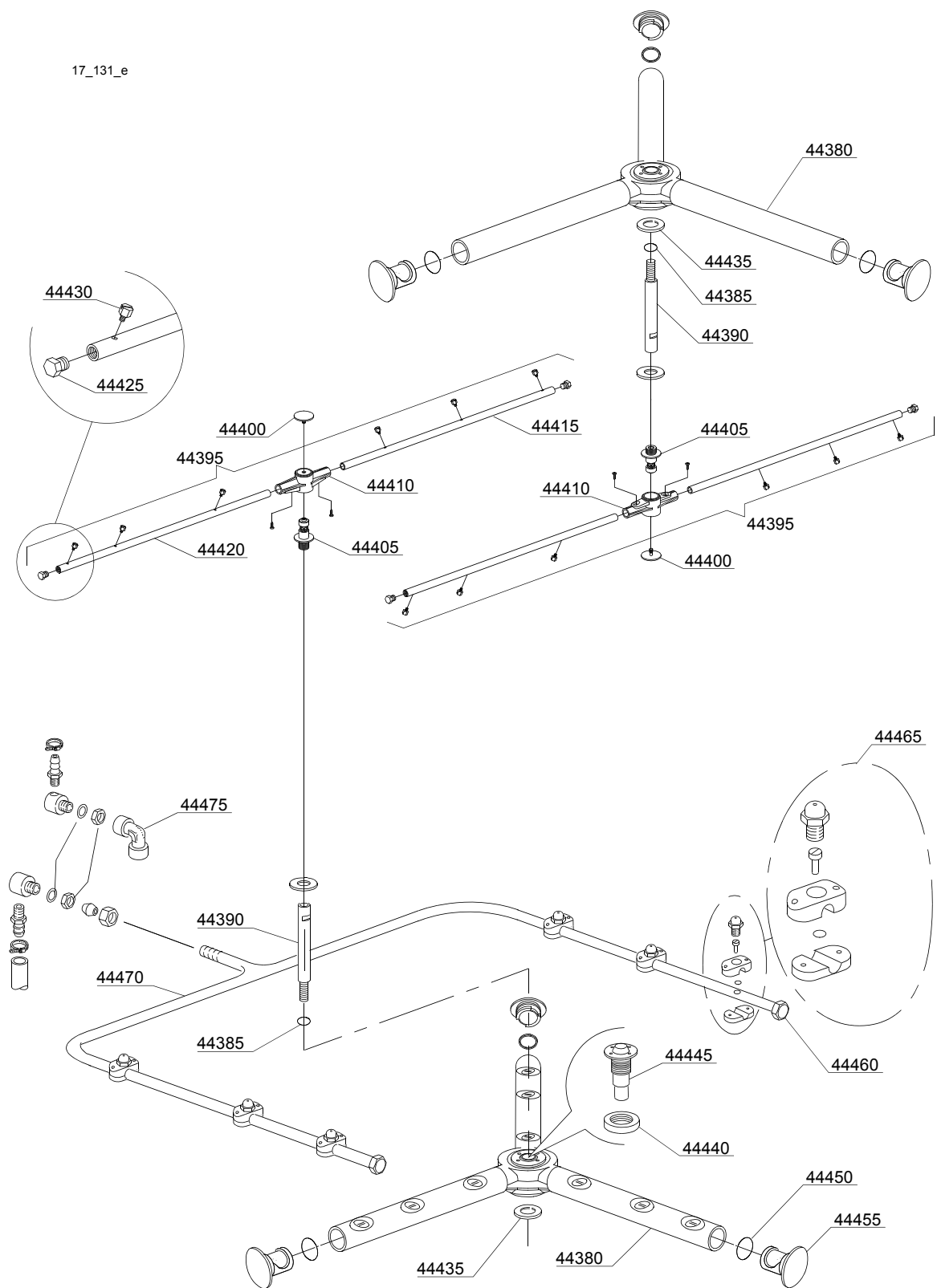
## Spare parts

ID	P-code	Model	Type	Accessory	Voltage	Description
MODULE:Pressure switch group with air trap						
2100	88110		19ER			Pressure switch
2105	80106		19ER			Air trap
2110	13301		19ER			Gasket 14x8x1,5
2115	11702		19ER			Nut M8



## Spare parts

ID	P-code	Model	Type	Accessory	Voltage	Description
MODULE:Turret group with rotating arms						
24000	90004		19ER			Upper/lower complet wash rotor
24005	13009		19ER			OR 2050 NBR O-ring
24010	80321		19ER			Top shaft
24015	90003		19ER			Rinse group
24020	560018		19ER			Stainless steel rinse nozzle
24025	560017		19ER			Rinse arm plug
24030	11600033		19ER			Flow reduction ring
24035	13023		19ER			O-ring
24040	3003029		19ER			Plug
24045	88114		19ER			Plug 12 mm
24050	88975		19ER			Hub for rotor
24055	75317		19ER			Nut for wash arm bearing
24060	88125		19ER			Hub for rotor
24065	12018		19ER			Elbow fitting 3/8 F-F
24070	2902795		19ER			Rinse nozzle



## Spare parts

ID	P-code	Model	Type	Accessory	Voltage	Description
MODULE:Turret group with rotating arms						
44380	90004		19ER			Upper/lower complet wash rotor
44385	13009		19ER			OR 2050 NBR O-ring
44390	80321		19ER			Top shaft
44395	90003		19ER			Rinse group
44400	10652		19ER			Rinse arm screw
44405	10651		19ER			Rinse axle
44410	10650		19ER			Rinse arm
44415	10659		19ER			Right rinse arm - stainless steel nozzle
44420	10660		19ER			Left rinse arm - stainless steel nozzle
44425	560017		19ER			Rinse arm plug
44430	560018		19ER			Stanless steel rinse nozle
44435	11600033		19ER			Flow reduction ring
44440	75317		19ER			Nut for wash arm bearing
44445	88975		19ER			Hub for rotor
44450	13023		19ER			OR O-ring
44455	3003029		19ER			Plug
44460	88114		19ER			12 mm Plug
44465	2902795		19ER			Rinse nozzle
44470	88125		19ER			Hub for rotor
44475	12018		19ER			Elbow fitting 3/8 F-F