

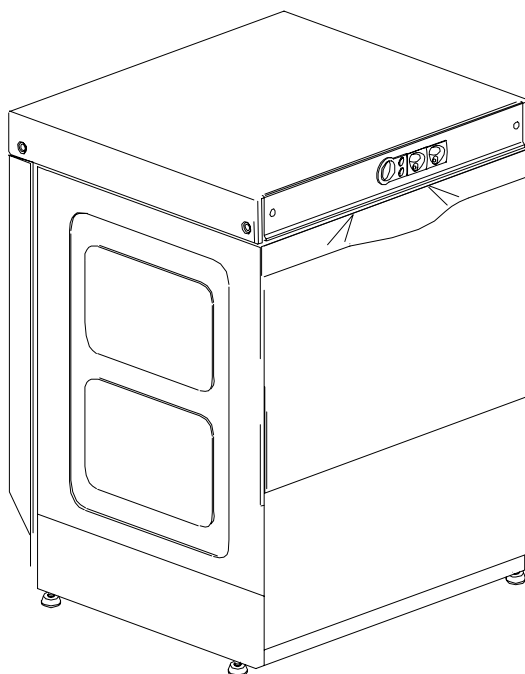
DISHWASHER

ELECTROMECHANICAL SWITCHES
LOWER WASHING

TYPE: 67U

Accessories
COLD RINSE
WATER SOFTNER
DETERGENT DISPENSER
DRAIN PUMP

Spare parts manual



1. Spare parts

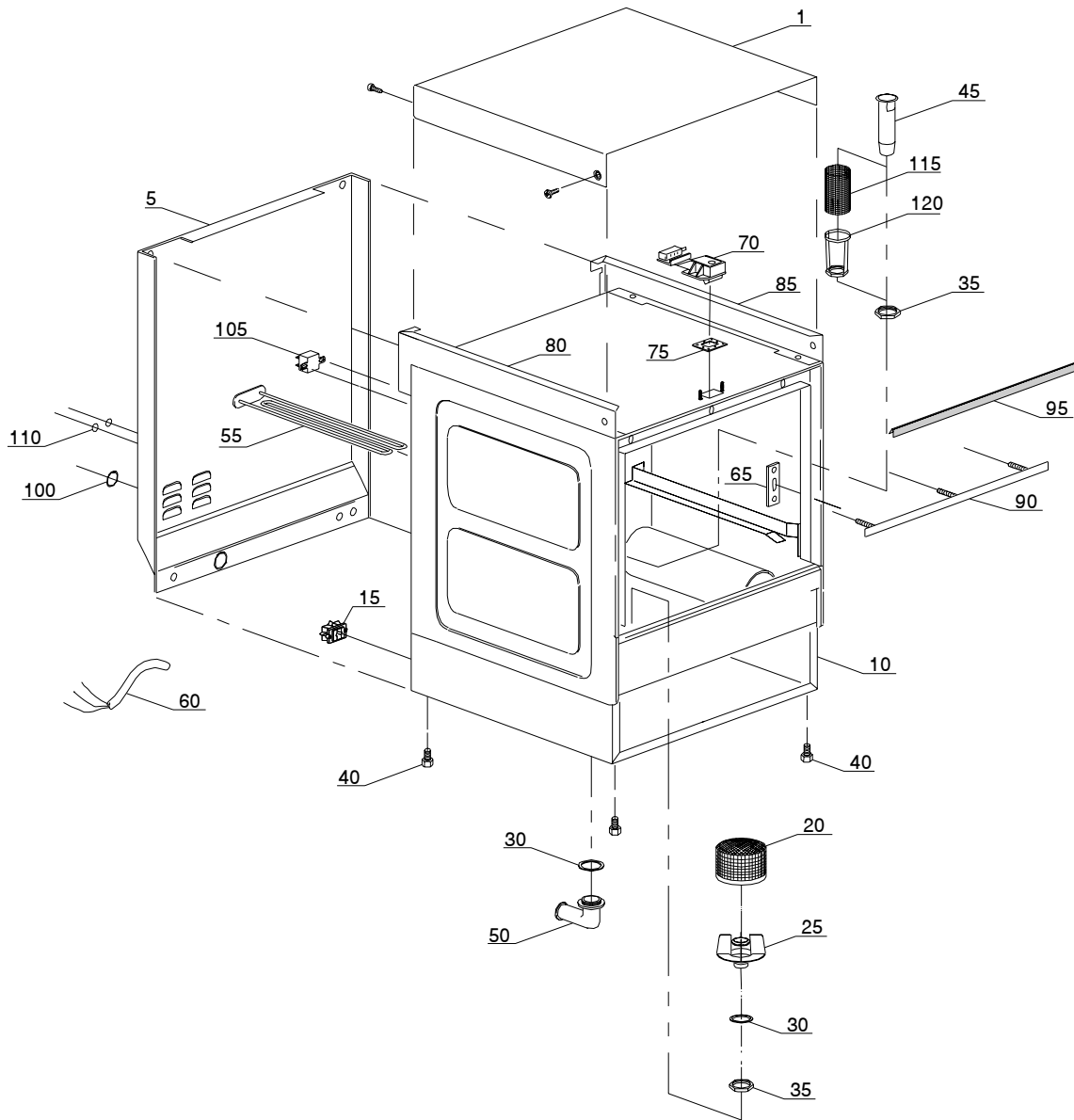
General body parts.....	7
Lockup system	9
Control panel	11
Control electric components.....	13
Solenoid valve group	15
Solenoid valve group	17
Water softner assembly	19
Shining product dosing device group .	21
3 ways derivation	23
4 ways derivation	25
Wash pump	27
Dosing device group	29
Drain pump group.....	31
Pressure switch group with air trap ...	33
Turret group with rotating arms	35

1.1 Voltage codes

Voltage code	Voltage
A	3/N/PE~400/230V 50Hz
B	~250V 16A 50Hz
C	3/N/PE~380/220V 50Hz
D	3/PE~200V 50-60Hz
F	2/PE 220-240V 50Hz
G	3/N/PE~415/240V 50Hz
H	3/PE~230V 50Hz
I	3/PE~220V 60Hz
J	3/PE~380 50Hz
K	3/PE~400V 50Hz
L	3/PE~415V 50Hz
M	3/PE~440V 60Hz
N	3/PE~460V 60Hz
O	3/PE~480V 60Hz
P	1/N/PE~220-240V 50Hz
R	2/PE~220-230V 60Hz
S	3/N/PE~400/230V 50Hz
T	3/PE~230V 60Hz

1.2 Product codes

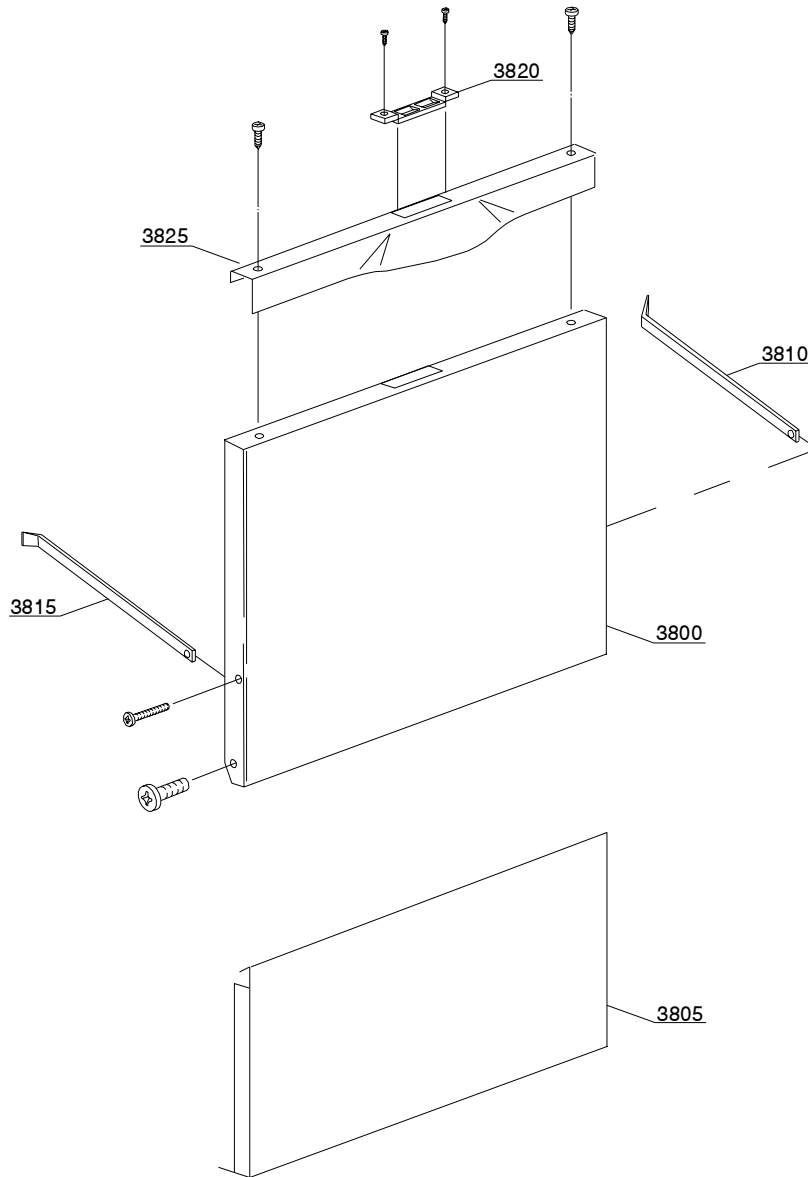
Product code	Full name
Model codes	
em	ELECTROMECHANICAL SWITCHES
cf	LOWER WASHING
Type codes	
67U	67U
Accessory codes	
fs	COLD RINSE
d	WATER SOFTNER
dde	DETERGENT DISPENSER
ps	DRAIN PUMP



01_005_e

Spare parts

ID	P-code	Model	Type	Accessory	Voltage	Description
MODULE:General body parts						
1	250029		67U			Cover
5	250015		67U			Back panel
10	250000		67U			Body
10	250001		67U	ws		Body
15	15065/A		67U			Cable-fastener with screw
20	540002		67U			Filter for top body
25	540000		67U			Top filter body
30	13305		67U			44x32x3 drain elbow gasket
35	11701/A		67U			Stainless steel nut
40	10850		67U			Foot
45	135252		67U			Overflow pipe
50	10701		67U			Drain elbow
55	10714		67U			2 KW heating element
60	10713		67U			3x2,5x2500 cable
65	150401		67U			Door rod slide
70	150402		67U			Door jack assembly
75	150403		67U			Door jack gasket
80	250026		67U			Left cover back support
85	250025		67U			Right cover back support
90	352919		67U			Door gasket angular
95	135206		67U			Door gasket
100	13317		67U			Ø40mm fairlead
105	2000431		67U			Safety thermostat
110	13323		67U			Ø13mm fairlead
115	440751		67U	dp		Drain pump stainless steel filter
120	11701/B		67U	dp		Stainless steel nut

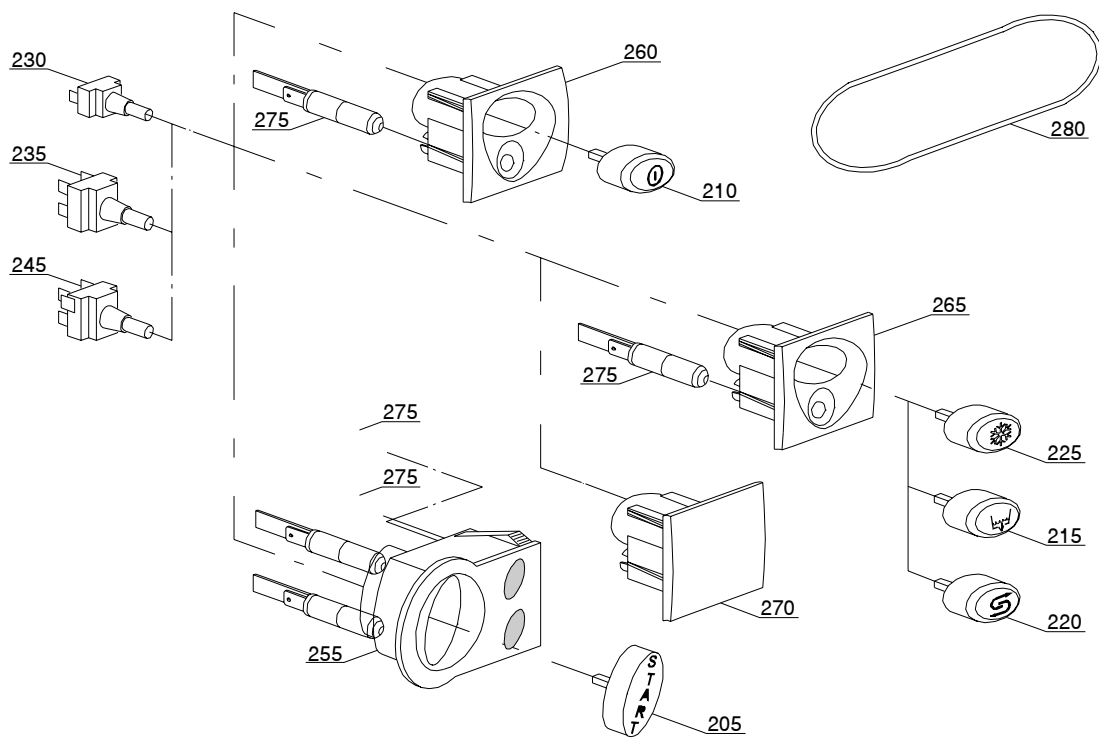
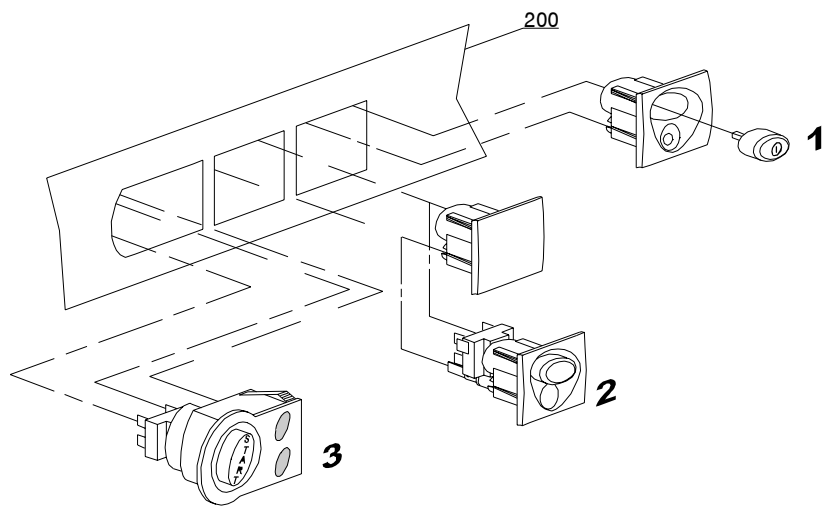


02_103_e

Spare parts

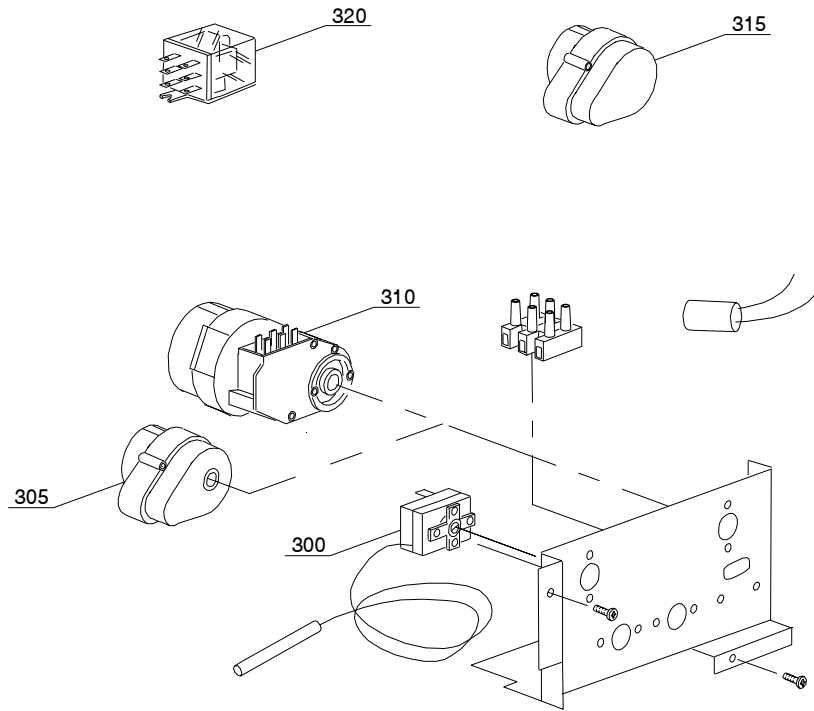
ID	P-code	Model	Type	Accessory	Voltage	Description
MODULE:Lockup system						
3800	250005		67U			Door
3805	250016		67U			Lower door
3810	250006		67U			Right door rod
3815	250007		67U			Left door rod
3820	150402/D		67U			Door jack
3825	250009		67U			Stainless steel handle

03_009_e



Spare parts

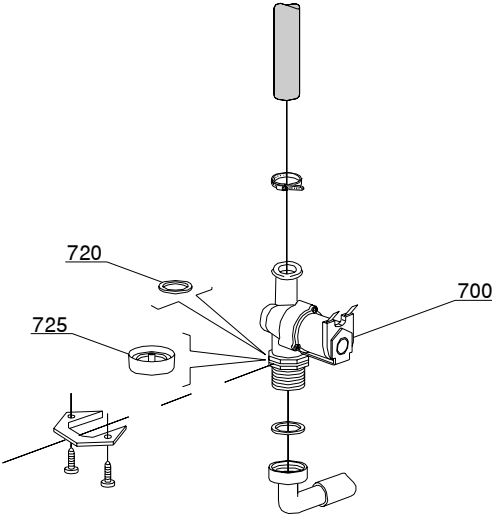
ID	P-code	Model	Type	Accessory	Voltage	Description
MODULE:Control panel						
200	352928		67U			G35 control panel
205	89347		67U			Start key
210	89340		67U			ON-OFF key
215	89343		67U	dp		Drain pump key
220	89345		67U	ws		Regeneration key
225	89344		67U	cr		Hot/cold key
230	15813		67U			16A unipolar push button
235	15812		67U			16A switch
235	15800		67U			16A bipolar push button
245	15811		67U			16A bipolar switch
245	15811/A		67U			16A bipolar switch push button
255	89301		67U			Start key support
260	89304		67U			Key support
265	89302		67U	dp,ws,cr		Key support
270	89303		67U			Closed support
275	15826		67U			Pilot light
280	89331		67U			OR gasket



04_007_e

Spare parts

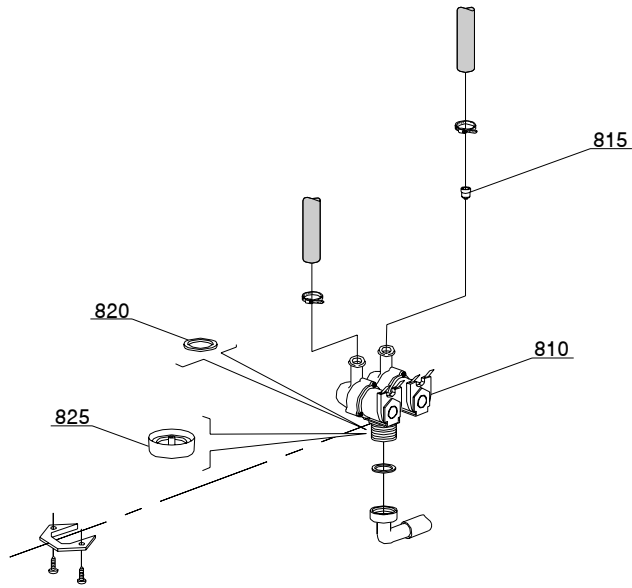
ID	P-code	Model	Type	Accessory	Voltage	Description
MODULE:Control electric components						
300	10707/1		67U			0-90°C thermostat
305	10708/L		67U			"120"" timer"
310	10708/B		67U			"120"" timer - 220Vac 60Hz"
310	10708/T		67U			"Timer 120"" with thermostop"
315	16064/A		67U	ws		Regeneration timer
320	15620		67U	dp		Bipolar relay in deviation



05_002_e

Spare parts

ID	P-code	Model	Type	Accessory	Voltage	Description
MODULE:Solenoid valve group						
700	10703		67U			Single solenoid valve
720	N.C.		67U			Pression reducing valve
725	15315		67U			Red pression reducing valve

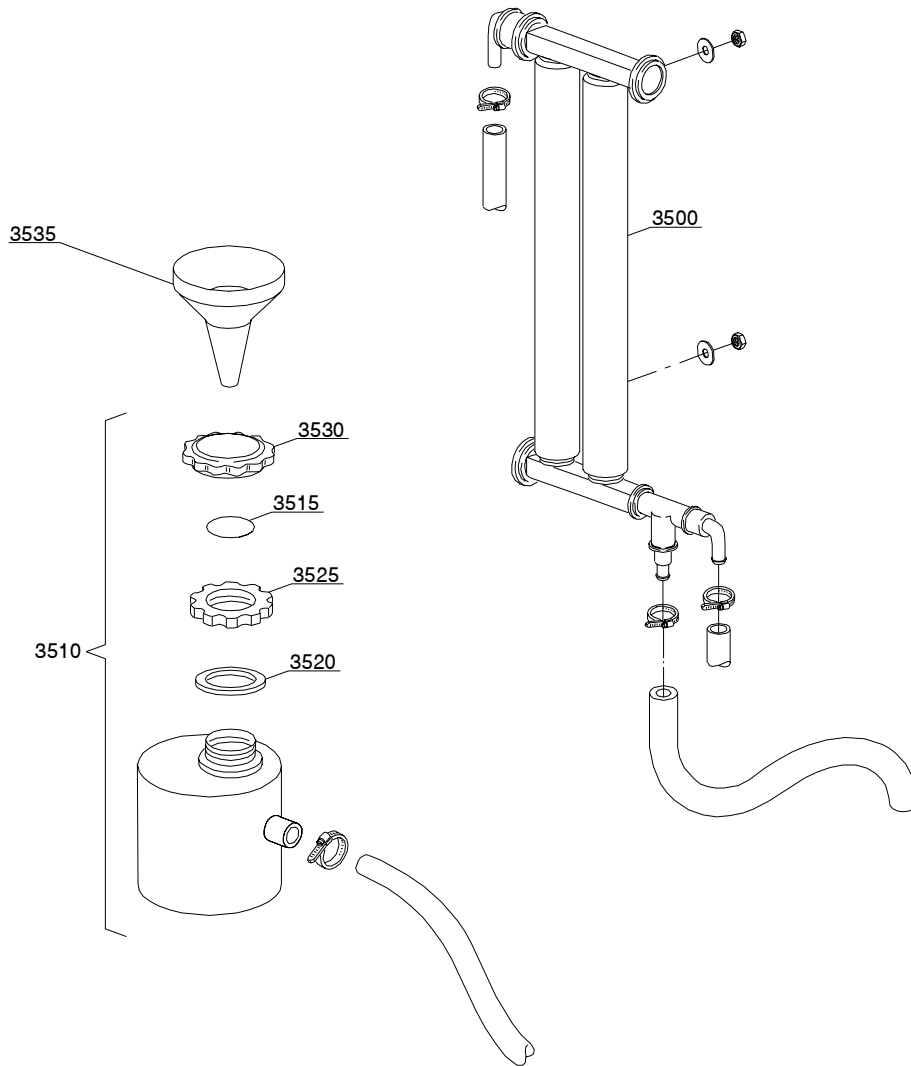


05_003_e

Spare parts

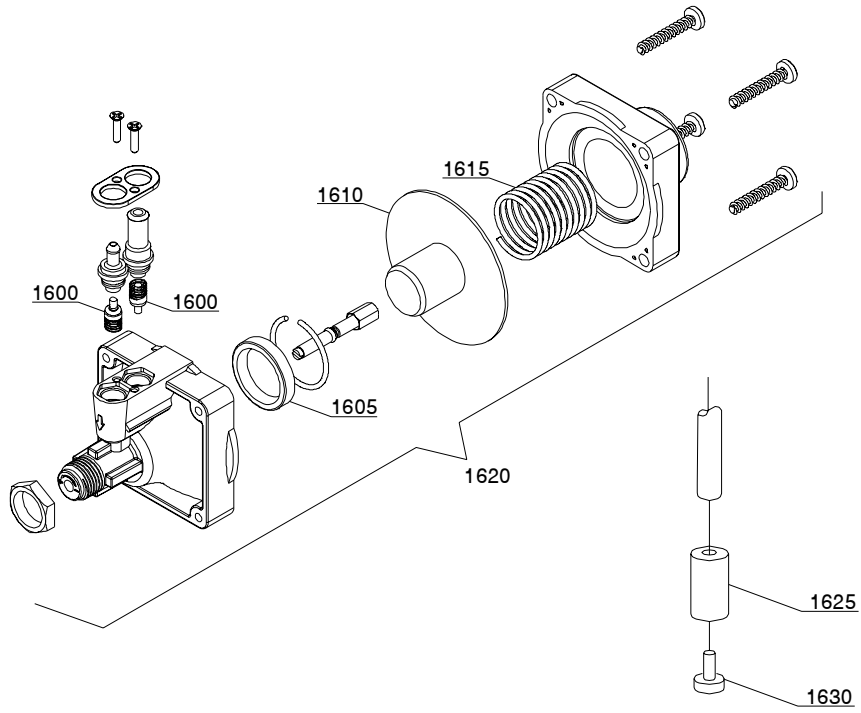
ID	P-code	Model	Type	Accessory	Voltage	Description
MODULE:Solenoid valve group						
810	15098		67U	cr,ws		Double solenoid valve - Ø10
815	15115		67U	cr,ws		Green pression solenoid valve
820	N.C.		67U	cr,ws		Pression reducing valve
825	15315		67U	cr,ws		Red pression reducing valve

09_004_e



Spare parts

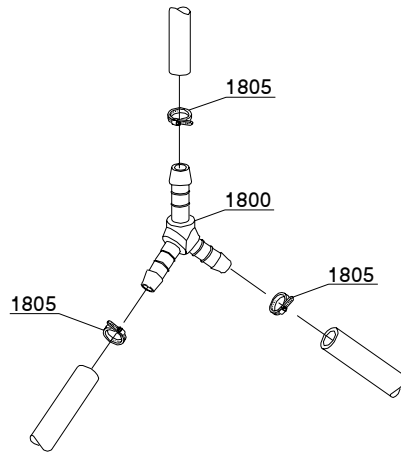
ID	P-code	Model	Type	Accessory	Voltage	Description
MODULE:Water softner assembly						
3500	16066/A		67U	ws		2 elements water softner
3510	16065		67U	ws		Salt container
3515	16067/A		67U	ws		OR gasket
3520	16067/B		67U	ws		Gasket
3525	16067/C		67U	ws		Ring nut
3530	16067/D		67U	ws		Plug
3535	16082		67U	ws		Funnel



10_003_e

Spare parts

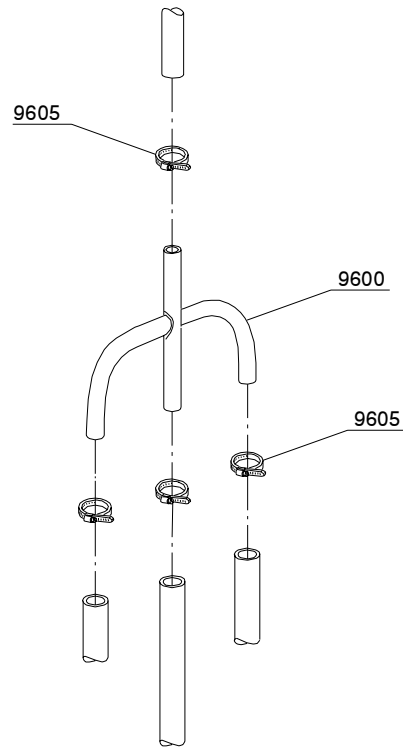
ID	P-code	Model	Type	Accessory	Voltage	Description
MODULE:Shining product dosing device group						
1600	10805		67U			Tecnopro dosing valve
1605	10806		67U			Ø22 gasket
1610	10807		67U			Membrane
1615	10808		67U			Spring
1620	10599999		67U			Shining product dosing device
1625	12525		67U			Counter-weight
1630	15058		67U			Small filter



12_003_e

Spare parts

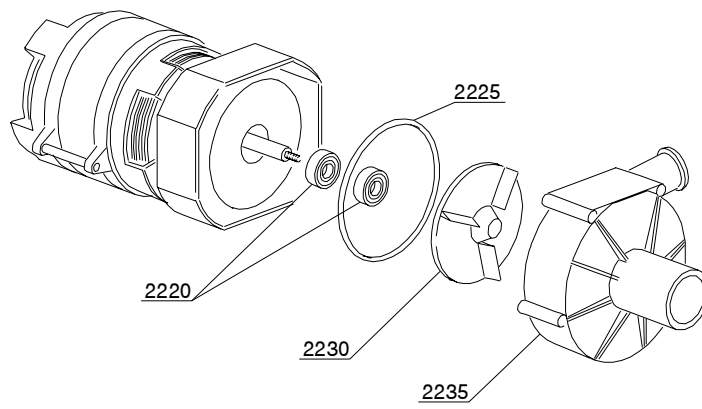
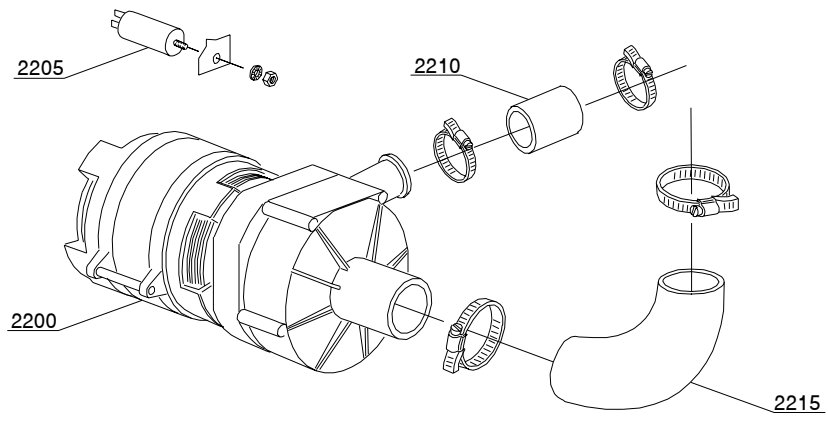
ID	P-code	Model	Type	Accessory	Voltage	Description
MODULE:3 ways derivation						
1800	540090		67U			Ø10 mm plastic 3 ways derivation
1805	11807		67U			12/22 clamp



12_004_e

Spare parts

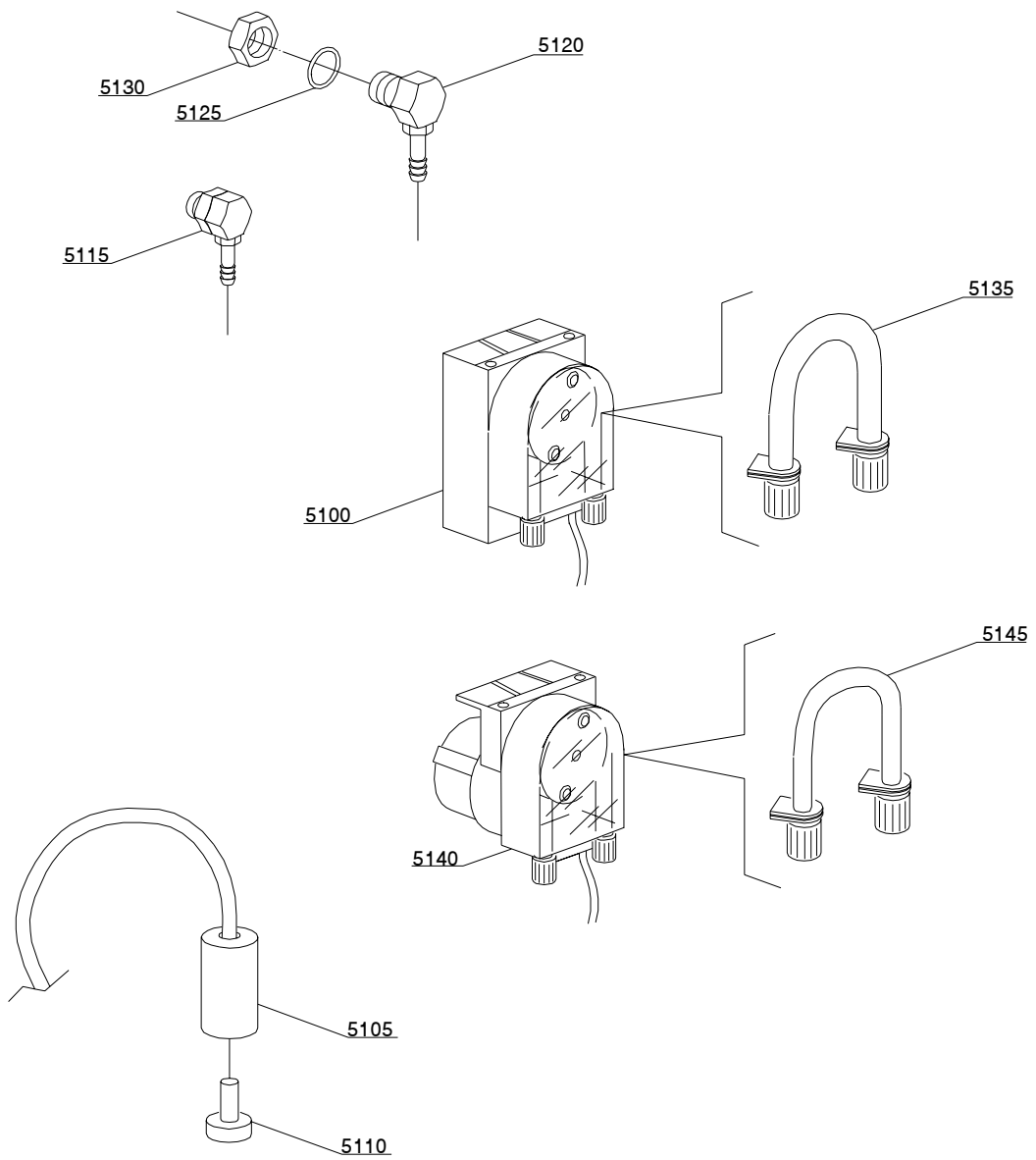
ID	P-code	Model	Type	Accessory	Voltage	Description
MODULE:4 ways derivation						
9600	15151		67U			Ø10 mm 4 ways derivation
9605	11807		67U			12/22 clamp



13_002_e

Spare parts

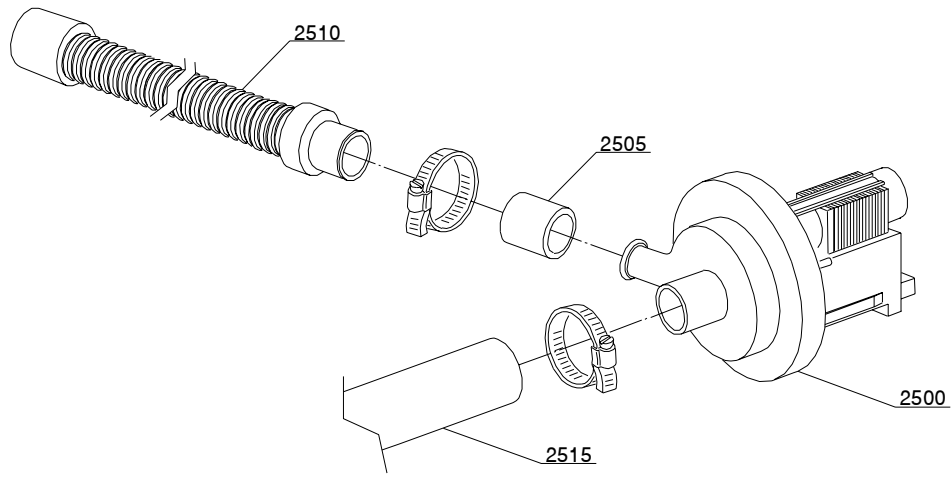
ID	P-code	Model	Type	Accessory	Voltage	Description
MODULE:Wash pump						
2200	10501/A		67U			0,10 Hp wash pump
2200	10501/D		67U			0,10 Hp wash pump - 220VAc 60Hz
2205	10702		67U			5 uF condenser
2210	10718		67U			Pump pipe coupling
2215	18787		67U			Suction pipe coupling
2220	10505		67U			Pump shaft gaskets
2225	10506		67U			79,8x2,6 OR gasket
2230	10504		67U			Pump rotor
2235	10502		67U			Scroll



14_004_e

Spare parts

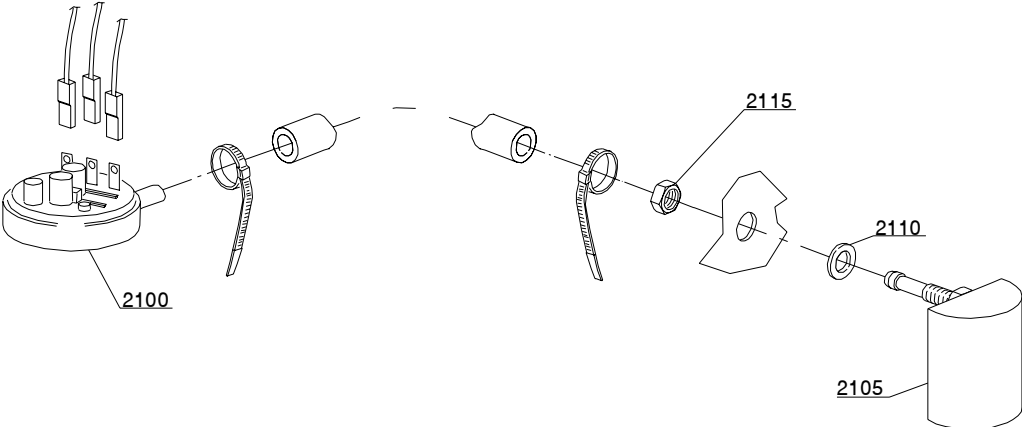
ID	P-code	Model	Type	Accessory	Voltage	Description
MODULE:Dosing device group						
5100	15985		67U	dd		Seko dosing device
5105	12525		67U	dd		Counter-weight
5110	15058		67U	dd		Small filter
5115	15123		67U	dd		Compleat plastic injector
5120	15148		67U	dd		Steel injector
5125	15159		67U	dd		OR gasket
5130	10200205		67U	dd		M12x1 stainless steel nut
5135	15185		67U	dd		Seko thermoplastic pipe
5140	15985		67U	dd		Germac dosing device
5145	15108/E		67U	dd		Germac thermoplastic pipe



15_004_e

Spare parts

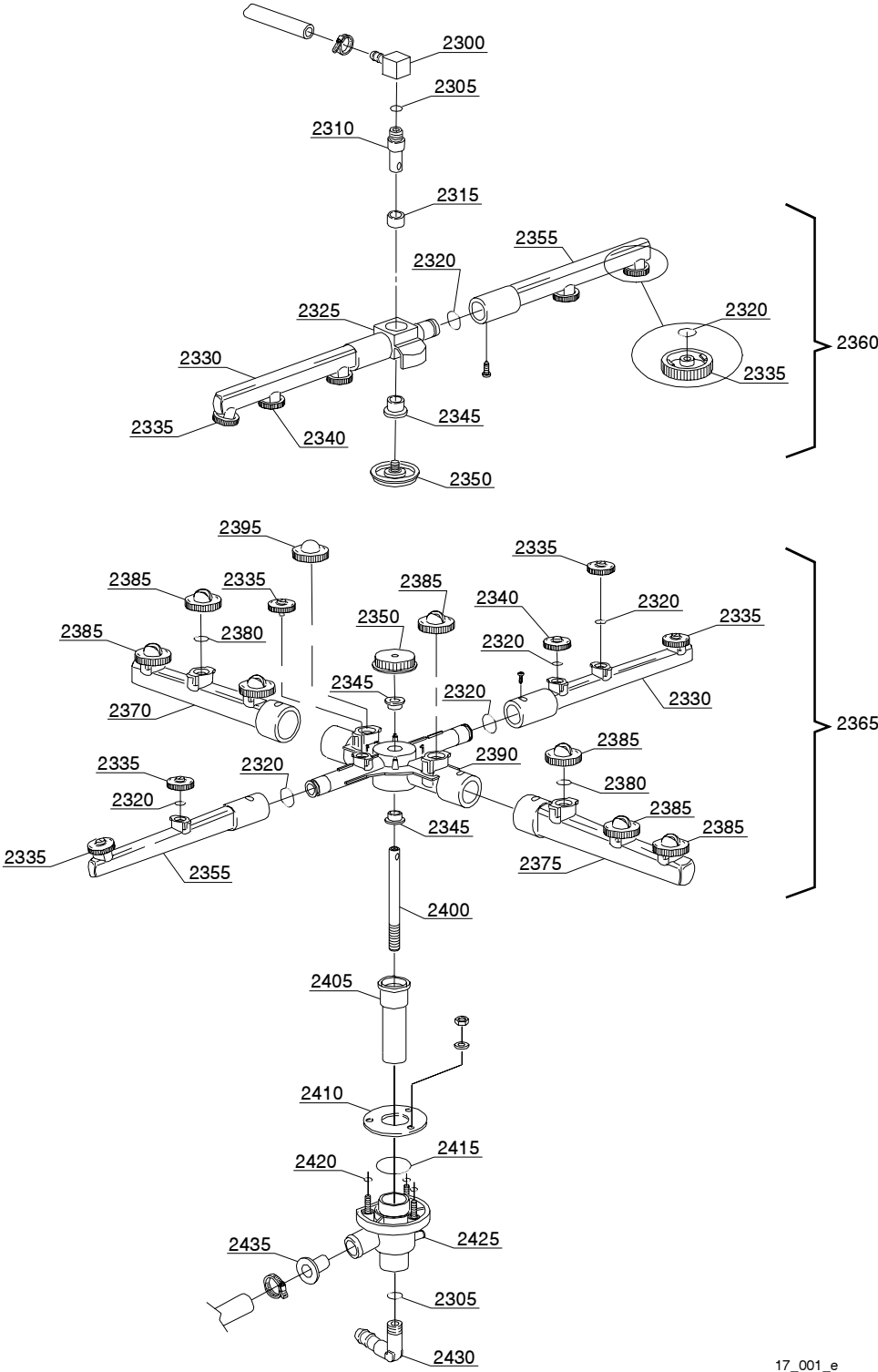
ID	P-code	Model	Type	Accessory	Voltage	Description
MODULE:Drain pump group						
2500	15101		67U	dp		Drain pump
2505	15101/D		67U	dp		Pipe fitting
2510	10727		67U	dp		Drain pipe
2515	10718		67U	dp		Drain coude/pump connection pipe



16_001_e

Spare parts

ID	P-code	Model	Type	Accessory	Voltage	Description
MODULE:Pressure switch group with air trap						
2100	10706/A		67U			47-27 pressure switch
2105	10911/C		67U			Air trap assembly
2110	13301		67U			Gasket
2115	11702		67U			M8 stainless steel nut



17_001_e

Spare parts

ID	P-code	Model	Type	Accessory	Voltage	Description
MODULE:Turret group with rotating arms						
2300	350402		67U			Top turret rinse hub
2305	13003		67U			OR 112 NBR gasket
2310	350401		67U			Lower axle rinse hub
2315	13320		67U			Sliding washer
2320	13002		67U			OR R6 NBR gasket
2325	10359		67U			Rinse rotor
2330	10361		67U			Left rinse pipe
2335	12537		67U			Opened head rinse nozzle
2340	12538		67U			Closed head rinse nozzle
2345	13319		67U			Sliding washer
2350	10365		67U			Handle with insert
2355	10360		67U			Right rinse pipe
2360	10996		67U			Top rinse group
2365	10998		67U			Lower wash/rinse group
2370	10355		67U			Right wash pipe
2375	10356		67U			Left wash pipe
2380	13009		67U			OR 2050 NBR gasket
2385	10357		67U			Opened head wash nozzle
2390	10364		67U			Wash rotor
2395	10358		67U			Closed head wash nozzle
2400	19003		67U			10x1x190 stainless steel ground axle
2405	19250		67U			Bell-shape assembly with pipe coupling
2410	16038		67U			Ø60 stainless steel disk
2415	13000		67U			OR 3125 NBR gasket
2420	13001		67U			OR 104 NBR gasket
2425	10205		67U			Lower wash turret
2430	12030		67U			3/8M Ø12 elbow pipe fitting
2435	18249		67U			Flux reducer