

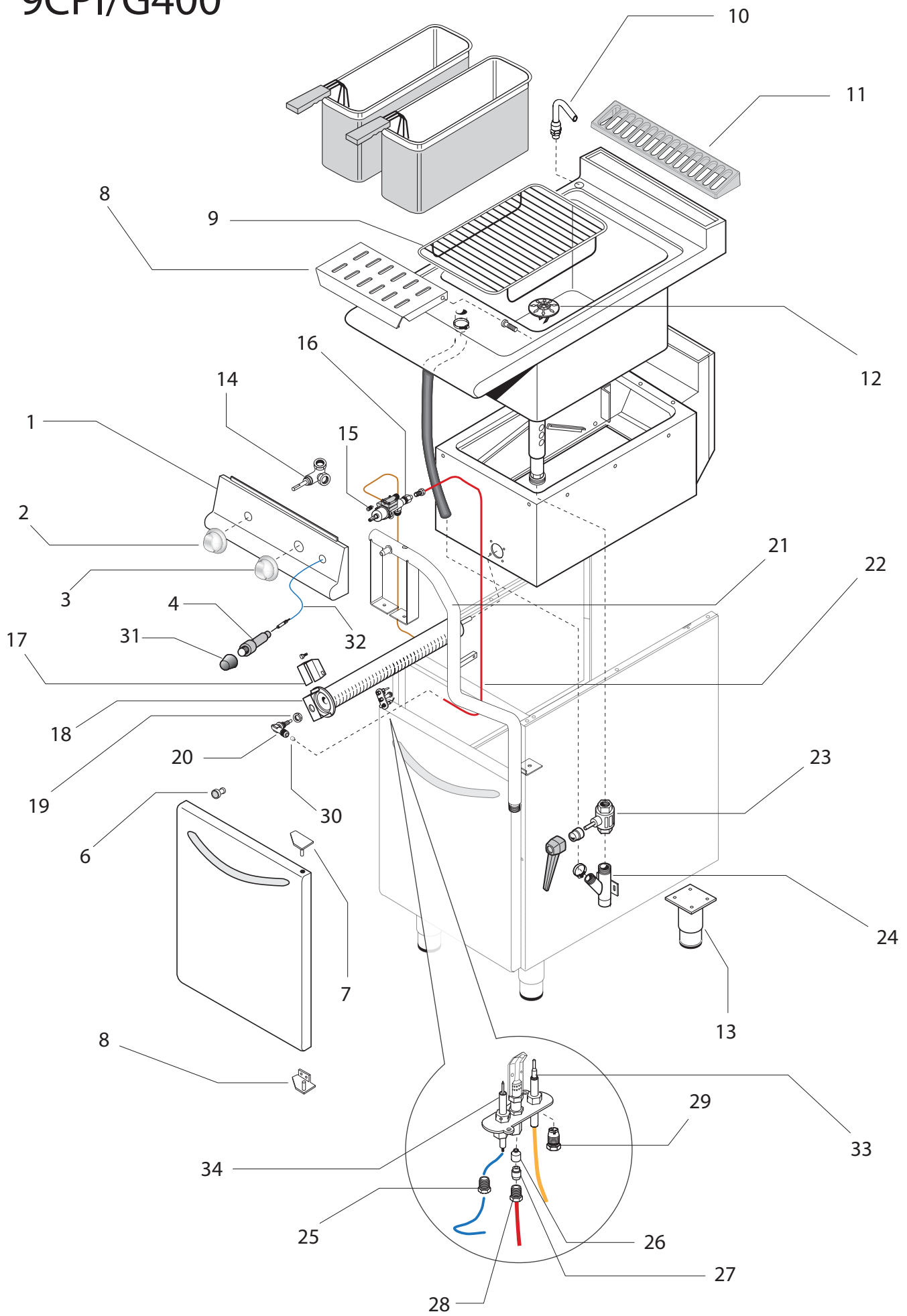


Thermische Geräte Serie 900
Gas-Nudelkocher
Artikel-Nr. 146008 (CR0786849)

Explosionszeichnung / Ersatzteile

Bitte bei Ersatzteilbestellung immer Artikelnummer und Seriennummer mit angeben!

9CPI/G400



Series 900

Pasta Cooker 9CPI/G400

Table_A

POS.	CODE	PIECES	DESCRIPTION	DATA	C
1	CR0905730	1	CONTROL PANEL		
2	CR0933930	1	COLD WATER KNOB		C
3	CR0932250	1	GAS VALVE KNOB		C
4	BN861310850	1	PIEZO		C
5	BN826430010	1	DOOR KNOB		
6	CR0587700	1	MAGNETE		C
7	BN2547870	2	TOP LEFT BOTTOM RIGHT HINGE		
8	BN2547871	2	TOP RIGHT BOTTOM LEFT HINGE		
9	BN2519580	1	GRID		
10	BN6A022910	1	FAUCET		
11	CR0901240	1	EXHAUSTING GRID		
12	MA1817300	1	EXHAUSTING FILTER		
13	MA60686113	4	FOOT		
14	BN82690070	1	WATER VALVE		C
15	BN6A023271	1	BY PASS		
16	CR0580450	1	GAS VALVE		C
17	BN8220060	1	PRIMARY AIR REGULATOR		
18	BN2519433	1	BURNER		
19	BN6A0114775	1	NUT		
20	BN6A014708	1	ANGLE SHAPE DUCT		
21	CR0905580	1	GAS RAMP		
22	CR0905580	1	GAS VALVE - BURNER DUCT		
23	BN826901320	1	DRAIN VALVE		C
24	BN826350202	1	DRAIN DUCT		
25	MA1888400	1	CANDLE NUT		
26	TABLE B	1	PILOT NOZZLE		
27	BN6A011706	1	PILOT BICONE		
28	BN6A011705	1	NUT FOR PILOT		
29	MA1891700	1	NUT FOR THERMOCOPY		
30	TABLE B	1	BURNER NOZZLE		
31	BN826630420	1	COVER FOR PIEZO		
32	BN2510698	1	CABLE ASSEMBLY FOR PIEZO		C
33	MA90520	1	THERMOCOPY		C
34	BN6A013302	1	STARTER FOR PILOT		C

C >>> Recommended exchange

Table_B

POS	COD	QUANT	DIAM	GAS
26	BN6A013230	1	ø 27,2	⊗ ▲ ▼ + ■
26	BN6A013240	1	ø 16,2	○ ■ •
30	BN2510430	1	ø 340	▲
30	BN2510330	1	ø 325	⊗
30	BN2510457	1	ø 210	■ ○
30	BN2510507	1	ø 185	•
30	BN2510331	1	ø 370	▼ ■
30		1	ø 310	+

ID GAS

- G30/50 ■ G30÷31/37 ○ G30/28÷37
- ⊗ G20/20 ▲ G25/25 ▼ G25/20 ■ G25.1/25 + G20/26
- G110 8mbar G120 8mbar