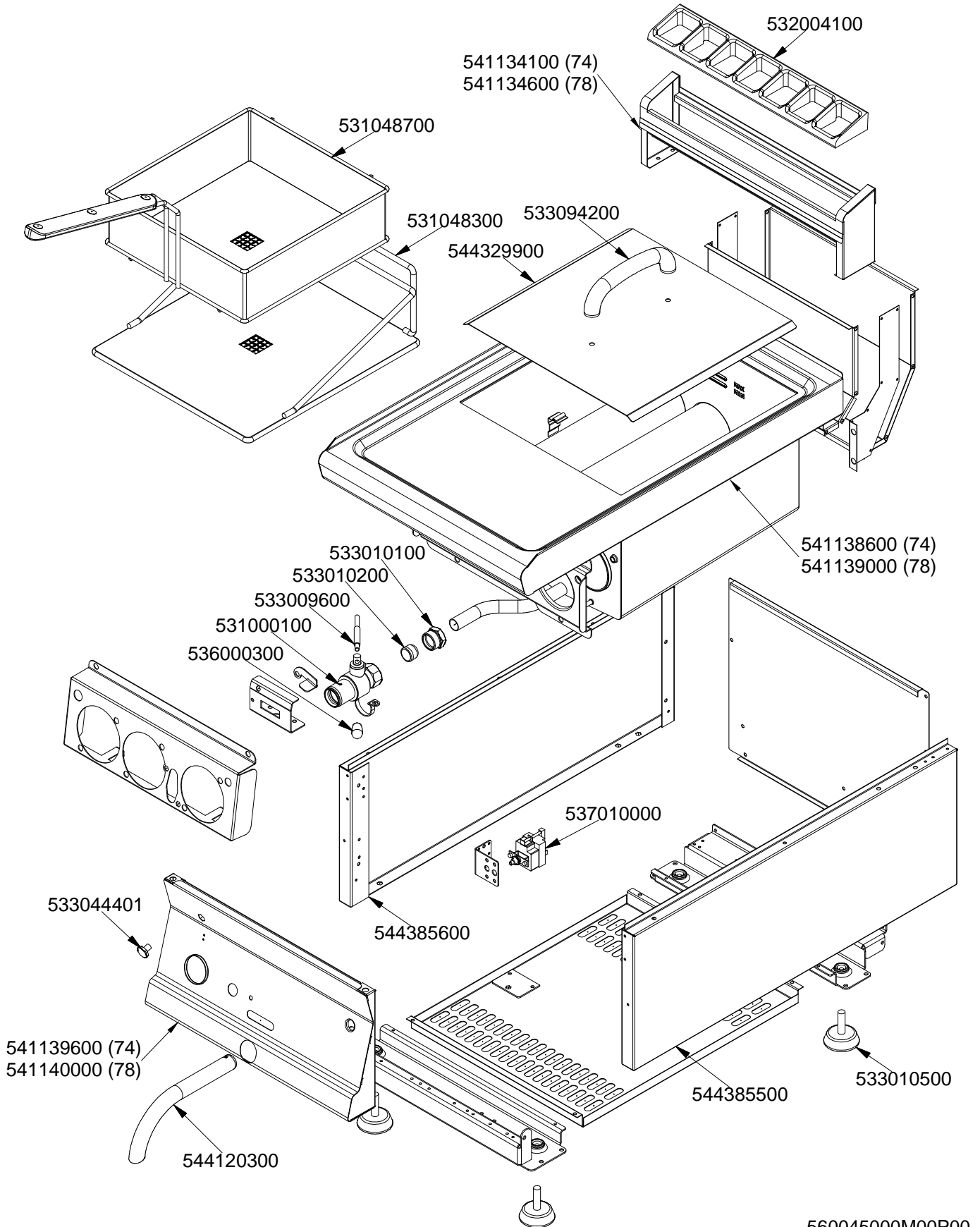


SUPERLOTUS 70 TOP

GAS / GAS / GAS / GAZ

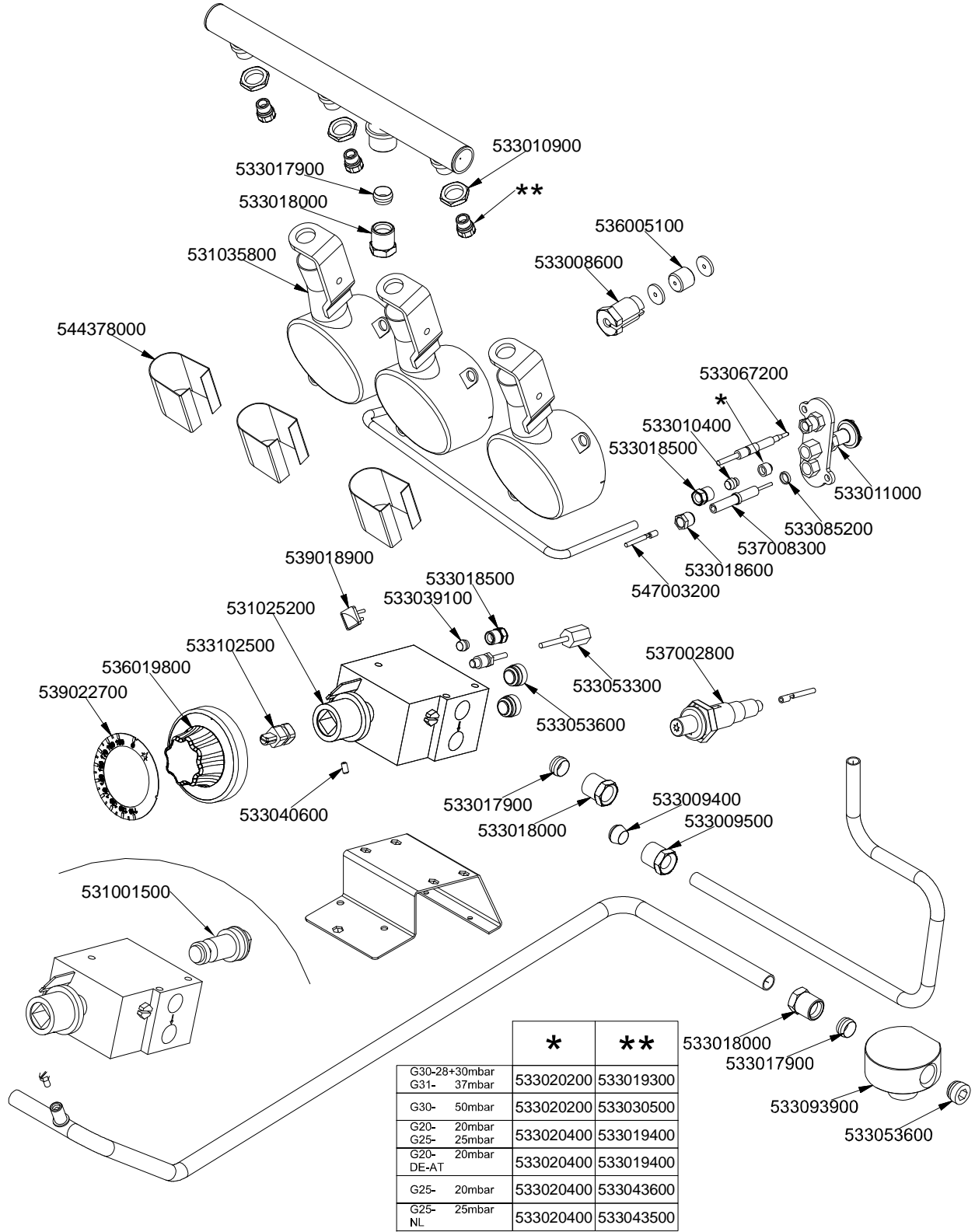
F13T-74G-F2/13T-78G



SUPERLOTUS 70 TOP

GAS / GAS / GAS / GAZ

F13T-74G-F2/13T-78G



560045100M00P00.

Page	Pos	Code	Description
001		532004100	FLUE GRID L=370 70LINE (RAF)
001		541134600	LOW SPACER 78 2 GRIDS
001		533094200	S/S HANDLE FOR 70/90 SERIES
001		531048700	BASKET F13T 280X290X095
001		531048300	TANK FILTER/BASKET SUPPORT F13T-G
001		544329900	
001		541139000	UPPER PLATE S70 F2/13T-78G
001		533010100	3/4 D. 18 PIPE UNION
001		533010200	BICONE 18S
001		533009600	DRAIN COCK HANDLE
001		531000100	DRAIN COCK 3/4"
001		536000300	FIXED GRIP D.15*25*M6
001		533044401	M8 THREADED CAP FOR SEC.THERMOSTAT
001		544385600	LEFT SIDE OF 70T LINE
001		541140000	CONTROL PANEL S70/90 F2/13T-78G
001		533010500	LEG M10*25 D.40
001		544385500	RIGHT SIDE OF 70T LINE
001		537010000	SAFETY THERMOSTAT 220°C SINGLEPHASE
001		544120300	DRAIN PIPE 22 FOR COCK 3/4"G
002		533010900	NUT M14*1 H.4
002		533017900	BICONE D.12
002		533018000	ELBOW FOR BICONE D.12 3/8 RS L20
002		531035800	BURNER FOR FRYER F13T
002		544378000	
002		536005100	GRAPHITE §07,4 GASKET
002		533008600	STUFFING BOX M9*1
002		533067200	THERMOCOUPLE 220+500 M9*1 CUT-OFF
002		533010400	BICONE D.6
002		533018500	FITTING FOR BICONE D.6 M10*1
002		533011000	PILOT BURNER 3 FLAMES 320
002		533085200	
002		537008300	ROUND PLUG §2,4- LONG ELECTRODE
002		533018600	PLUG FITTING
002		547003200	HIGH-VOLTAGE CABLE TUBE.§2 L=500
002		537002800	PIEZOELECTRIC IGNITION M18
002		533053300	THERMOCOUPLE EXTENSION M9*1
002		533053600	EUROSIT VALVE PLUG
002		533009400	BICONE 10S
002		533009500	NIPPLE FOR BICONE 10S
002		533040600	HEADLESS SCREW M4*8
002		531001500	MAGNET FOR EUROSIT VALVE
002		539018900	INDEX FOR KNOB
002		533039100	BICONE §6
002		531025200	EUROSIT VALVE FQ 110-190°C
002		533102500	
002		536019800	BLACK KNOB §70 PIN §8*6,5
002		539022700	ADHESIVE GRADUATED DISC FOR KNOB
002		533093900	FITTING GAS ENTRY 1/2G 2OUT 3/8G
002		533020200	PILOT JETS 0160 FOR LPG §30
002		533019300	NOZZLE §100 G-FQ5 F-CW
002		533030500	NOZZLE §90 CH12X14 G30/CE

Page	Pos	Code	Description
002		533020400	NOZZLE 0160 (NATURAL GAS) 51
002		533019400	NOZZLE §180 CH12*14 L-FQ5
002		533043600	NOZZLE §200 CH12*14 L-PC4 UR
002		533043500	NOZZLE §190 CH12*14 G25 PC4R