

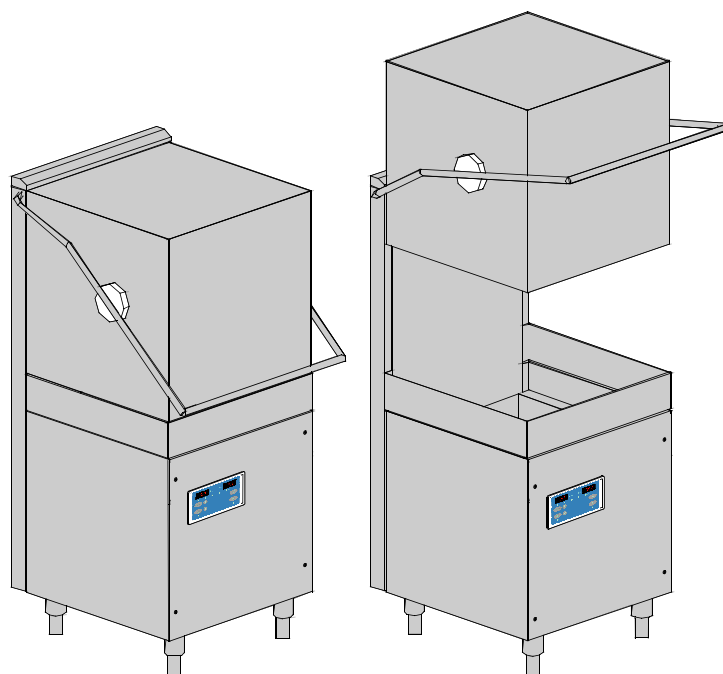
HOOD TYPE MACHINE

INSULATED HOOD
ELECTRONICAL CONTROL

TYPE: H63E

Accessories
BREAK TANK
BOOSTER PUMP
DVGW
WATER SOFTNER
DETERGENT DISPENSER
DRAIN PUMP

Spare parts manual



INFORMAZIONI GENERALI

Questo catalogo serve per richiedere con esattezza le parti di ricambio

Nelle ordinazioni indicare:

1) il numero dei codici dei particolari seguito dalla descrizione e la quantità desiderata;

2) Il codice alfa-numerico presente nella seconda colonna della tabella ;

I disegni delle parti di ricambio sono solo indicativi e non rappresentano il pezzo in oggetto.

I dati contenuti in questo catalogo sono indicativi e possono essere soggetti a modifiche senza impegno di preavviso.

ALLGEMEINE INFORMATIONEN

Dieser Ersatzteilkatalog dient zur genauen Angabe der Teile bei Ersatzteilbestellungen.

Bei Ersatzbestellung ist folgendes anzugeben:

1) Die Bestellnummer der Ersatzteile mit der entsprechenden Beschreibung genaue Menge;

2) Der alpha-numerischer Code auf der zweiten Reihe in dein Spalte;

Die Zeichnungen der Ersatzteile sind nur als Hinweise gedacht und stellen nicht das betroffene Teil dar.

Bei den im Katalog angeführten Daten handelt es sich um Anhaltsdaten, die jederzeit, ohne Vorankündigung, geändert werden können.

GENERAL INFORMATION

The present spare parts order exactly the right spare parts

When ordering specify:

1) the part's code number followed by its description and quantity needed;

2) The alpha-numeric code is in the second column in the chart;

Spare parts drawings are general and do not represent the part.

The contents of this catalogue are general and can undergo changes without prior notice.

INFORMACIONES GENERALES

El presente catálogo sirve para pedir con exactitud las partes de repuesto

En los pedidos se debe indicar:

1) el número de código de la parte y a continuación la descripción cantidad deseada;

2) El código alfanumerico presente en la signada columna de la tabla;

Los diseños de las partes de recambio son solo indicativos y no representan la pieza en cuestión.

Los datos contenidos en el presente catálogo son indicativos y pueden modificarse sin aviso previo.

INFORMATIONS GENERALES

Ce catalogue permet de commander correctement les pièces détachées

Les commandes doivent être passées en indiquant:

1) le numero de code des pièces détachées suivi de leur description quantité désirée;

2) le code alphanumérique dans la deuxième colonne du tableau;

Les plans des pièces détachées sont fournis seulement à titre indicatif et ne représentent pas la pièce concernée.

Les données de ce catalogue sont citées seulement à titre indicatif et peuvent être l'objet de modifications sans avis préalable.

ESEMPIO
EXAMPLE
EXEMPLE
BEISPIEL

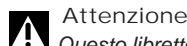
| Rif. | Codici |
|--------------------|---------|
| MODULE:Particolari | |
| 10505 | 540903 |
| 10510 | 540908 |
| 10515 | 15065/A |
| 10520 | 540086 |
| 10525 | 540028 |



Note

Tutte le informazioni riportate si intendono aggiornate alla data di stampa. Il Produttore si riserva il diritto di apportare qualsiasi modifica richiesta dallo sviluppo evolutivo dei suddetti prodotti.

Per la sicurezza, la garanzia, l'affidabilità ed il valore della lavastoviglie usa solo ricambi originali. **Per alcuni codici, sono richieste quantità minime d'ordine.**



Attenzione

Questo libretto è parte integrante della lavastoviglie e, in caso di passaggio di proprietà, deve essere consegnato al nuovo acquirente.



Remarque

Toutes les informations contenues dans ce manuel s'entendent mises à jour à la date d'impression. En raison du développement constant de ses produits, usine se réserve le droit d'apporter à tout instant les modifications qu'elle jugera utiles.

Pour la sécurité, la garantie, la fiabilité et la valeur de votre lavevaisselles n'utilisez que des pièces de rechange d'origine. **Pour quelque référence on demande un minimum de pièces par commande**



Attention

Ce manuel doit être considéré comme partie intégrante de la la lavevaisselles, en cas de transfert de propriété, doit toujours être remis au nouveau propriétaire.



Note

The information contained herein is valid at the time of going to print. The Company reserves the right to make any changes required by the future development of the above-mentioned products.

For your safety, as well as to preserve the warranty reliability and worth of your dishwashers, use original spare parts only. **For some codes a minimum quantity for order is required.**



Warning

This manual forms an integral part of the dishwashers and - if a transfer of title occurs - must always be handed over to the new owner.



Hinweis


Die Der Hersteller behält sich das Recht vor, jegliche, durch eine Weiterentwicklung der genannten Produkte bedingte Änderungen vornehmen zu können.

Verwenden Sie für Ihre Sicherheit, die Garantie, die Zuverlässigkeit und den Wert Ihrer machine originale Ersatzteile. **Für bestimmte Code nummer werden mindesten bestellungen verlangt.**




Achtung

Diese Betriebsanleitung ist Bestandteil des machine und muss bei seinem Weiterverkauf dem neuen Besitzer ausgehändigt werden.




Code DW 999XXXXXX **CL/Part**

Model DESCRIPTION 

S/N DW A 1015770 **Type**


400V 3N 50HZ 8A
3500W 500W



TECHICAL SPECIFICATION


Pressione Dinamica alimentazione idrica 200-500 kPa
 Pression dynamique arrivee d'eau
 Dynamic pressure water supply
 Dynamischer Druck asserreinlauf


Pressione dinamica vapore saturo
 Pression dynamique vapeur satuee
 Dymanischer Druck gesattigter Dampf
 Pression Dinamica Vapor Saturado

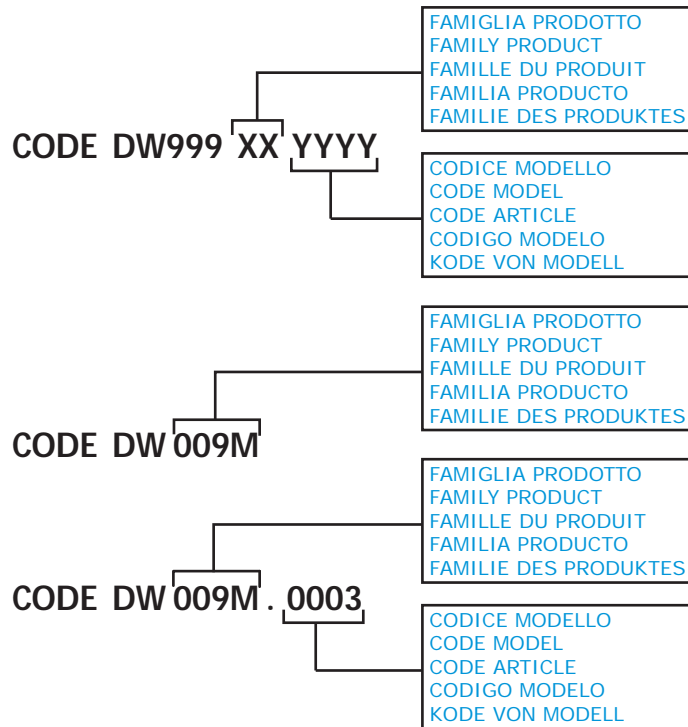


MADE IN ITALY

Temperatura massima acqua in ingresso 60°C
 Temperature max eau a l'entre
 Maximale Temperatur Wasseranschlu
 Maximum Water temperature in-feeding

Model 

S/N 



1. Spare parts

| | |
|---|-----------|
| General body parts..... | 9 |
| Closing panelig..... | 11 |
| Control panel and switches..... | 15 |
| Electric control components..... | 17 |
| Solenoid valve group | 19 |
| Solenoid valve group | 21 |
| Break Tank | 23 |
| Booster pump..... | 25 |
| Booster pump..... | 27 |
| DVGW | 29 |
| Water softner group..... | 31 |
| Rinse aid dispenser group..... | 33 |
| Boiler group | 35 |
| 3 ways connection | 37 |
| Wash pump group..... | 39 |
| Dosing detergent group..... | 41 |

| | |
|--|-----------|
| Drain pump group..... | 43 |
| Pressure switch group with air trap ... | 45 |
| Turret group with rotating arms | 47 |
| Turret group with rotating arms | 49 |

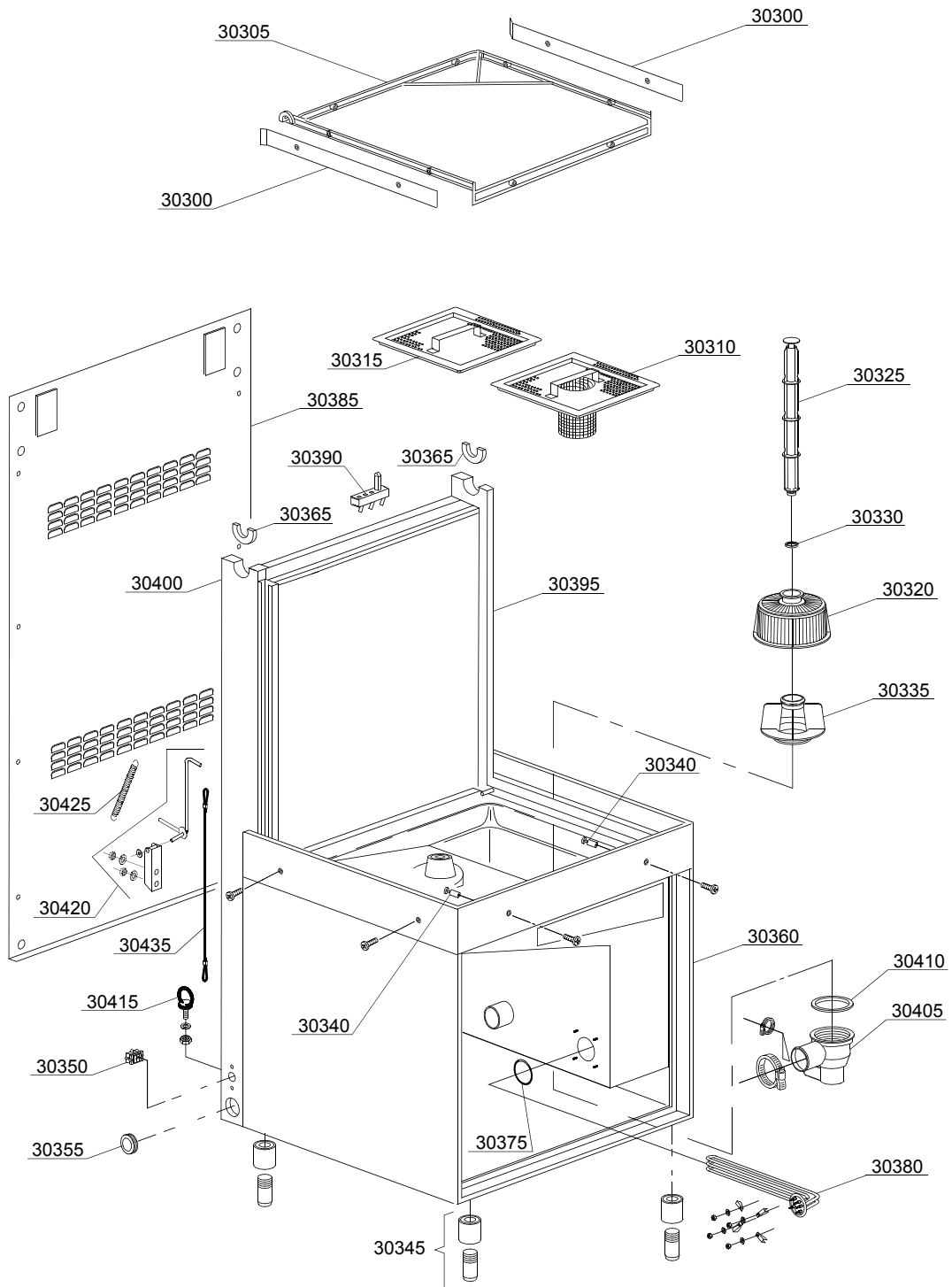
1.1 Voltage codes

| Volt | Voltage code |
|------|-------------------------|
| A | 3/N/PE~380-400V 50-60Hz |
| D | 3/PE~200-210V 50-60Hz |
| F | 2/PE~220-240V 50-60Hz |
| G | 3/N/PE~415V 50-60Hz |
| H | 3/PE~220-230V 50-60Hz |
| K | 3/PE~380-400V 50-60Hz |
| L | 3/PE~415V 50-60Hz |
| M | 3/PE~440V 60Hz |
| P | 1/N/PE~220-230V 50-60Hz |
| R | 2/PE~220-240V 50-60Hz |
| U | 1/N/PE~240V 50-60Hz |
| V | 3/PE~240V 50-60Hz |
| W | 1/N/PE~100-110V 50-60Hz |

1.2 Product codes

| Product code | Full name |
|-----------------|----------------------|
| Model codes | |
| i | INSULATED HOOD |
| e | ELECTRONICAL CONTROL |
| Type codes | |
| H63E | H63E |
| Accessory codes | |
| bt | BREAK TANK |
| bp | BOOSTER PUMP |
| dvgw | DVGW |
| ws | WATER SOFTNER |
| dd | DETERGENT DISPENSER |
| dp | DRAIN PUMP |

01_028_e



Spare parts

| ID | P-code | SN from | SN to | Mod. | Acces. | Volt | Description |
|----------------------------------|------------|---------|-------|------|--------|------|--|
| Module:General body parts | | | | | | | |
| 30300 | 10600923 | | - | | | | Guide rail |
| 30305 | 11600001 | | - | | | | Rack frame |
| 30310 | 11600906 | | - | | | | Strainer plate with a strainer box |
| 30315 | 11600907 | | - | | | | Strainer plate |
| 30320 | 500616 | | - | | | | Suction filter |
| 30325 | 11600102 | | - | | | | Overflow pipe |
| 30330 | 13021 | | - | | | | DEM 40 O-ring |
| 30335 | 500615 | | - | | | | Ferrule with filter |
| 30340 | 11600018 | | - | | | | Basket support holder pin M6 |
| 30345 | 15116 | | - | | | | Foot |
| 30350 | 15065/A | | - | | | | Cable-fastener with screw |
| 30355 | 13324 | | - | | | | Cable screw cap |
| 30360 | 11600960 | | - | | | | Frame assembly |
| 30365 | 11600055 | | - | | | | Right/left slide bearing |
| 30375 | 13015 | | - | | | | O-ring |
| 30380 | 15047/A | | - | | | | 2,7/2,94KW 230/240V 3 heating element |
| 30385 | 11600630 | | - | | | | Back panel |
| 30390 | 70305 | | - | | | | Hood switch |
| 30395 | 11600620 | | - | | | | Right guide rail support |
| 30400 | 11600621 | | - | | | | Left guide rail support |
| 30405 | 500605 | | - | | | | Outlet connection |
| 30410 | 80208 | | - | | | | 95x75x3 O-ring |
| 30415 | 11600058 | | - | | | | Passage ring for the security cord |
| 30420 | 11600059 | | - | | | | Support for the security system assembly |
| 30425 | 10700 | | - | | | | Spring |
| 30435 | 11600057/A | | - | | | | Security system cord |

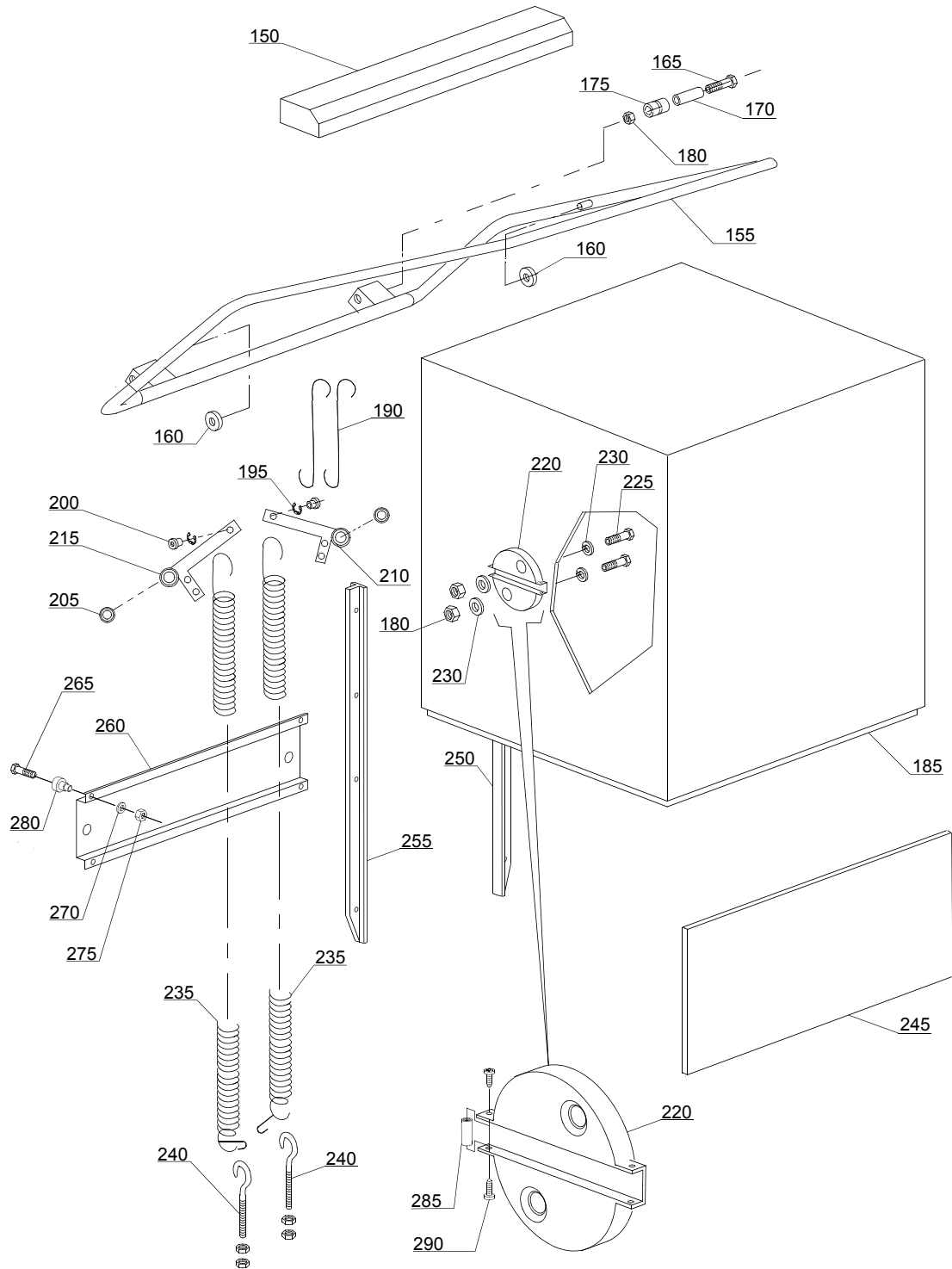
i=INSULATED HOOD, e=ELECTRONICAL CONTROL

H63E=H63E

bt=BREAK TANK, bp=BOOSTER PUMP, dvgw=DVGW, ws=WATER SOFTNER, dd=DETERGENT DISPENSER, dp=DRAIN PUMP

A=3/N/PE~380-400V 50-60Hz, D=3/PE~200-210V 50-60Hz, F=2/PE~220-240V 50-60Hz, G=3/N/PE~415V 50-60Hz, H=3/PE~220-230V 50-60Hz, K=3/PE~380-400V 50-60Hz, L=3/PE~415V 50-60Hz, M=3/PE~440V 60Hz, P=1/N/PE~220-230V 50-60Hz, R=2/PE~220-240V 50-60Hz, U=1/N/PE~240V 50-60Hz, V=3/PE~240V 50-60Hz, W=1/N/PE~100-110V 50-60Hz

02a202_e



Spare parts

| ID | P-code | SN from | SN to | Mod. | Acces. | Volt | Description |
|-------------------------------|----------|---------|-------|------|--------|------|-------------------------------------|
| Module:Closing panelig | | | | | | | |
| 150 | 11600913 | | - | | | | Guide |
| 155 | 11600910 | | - | | | | Handle |
| 160 | 89919 | | - | | | | Bearing |
| 165 | 11214 | | - | | | | Screw |
| 170 | 11600015 | | - | | | | Filter |
| 175 | 11600014 | | - | | | | Roller |
| 180 | 11718 | | - | | | | M8 stainless steel self-locking nut |
| 185 | 11600925 | | - | | | | Hood, complete |
| 190 | 11600013 | | - | | | | Hook |
| 195 | 11823 | | - | | | | Ø10 stainless steel snap ring |
| 200 | 11600038 | | - | | | | Spring bush |
| 205 | 10800010 | | - | | | | Bearing 6002 2RS |
| 210 | 11600026 | | - | | | | Elbow, right |
| 215 | 11600027 | | - | | | | Elbow, left |
| 220 | 11600030 | | - | | | | Bearing holder |
| 225 | 11110 | | - | | | | Screw |
| 230 | 13301 | | - | | | | Gasket Ø 14x8x1,5 |
| 235 | 70302 | | - | | | | Hood spring |
| 240 | 10800210 | | - | | | | Hook screw |
| 245 | 11600616 | | - | | | | Front plate |
| 250 | 11600028 | | - | | | | Guide, right |
| 255 | 11600029 | | - | | | | Guide, left |
| 260 | 11600624 | | - | | | | Leavers bearing foor hood |
| 265 | 11134 | | - | | | | M10x35 TE Stainless steel screw |
| 270 | 11192 | | - | | | | M10 Stainless steel epring washer |
| 275 | 11719 | | - | | | | M10 inox nut |
| 280 | 10800115 | | - | | | | Lifting rod pin |
| 285 | 76251 | | - | | | | Spacer |

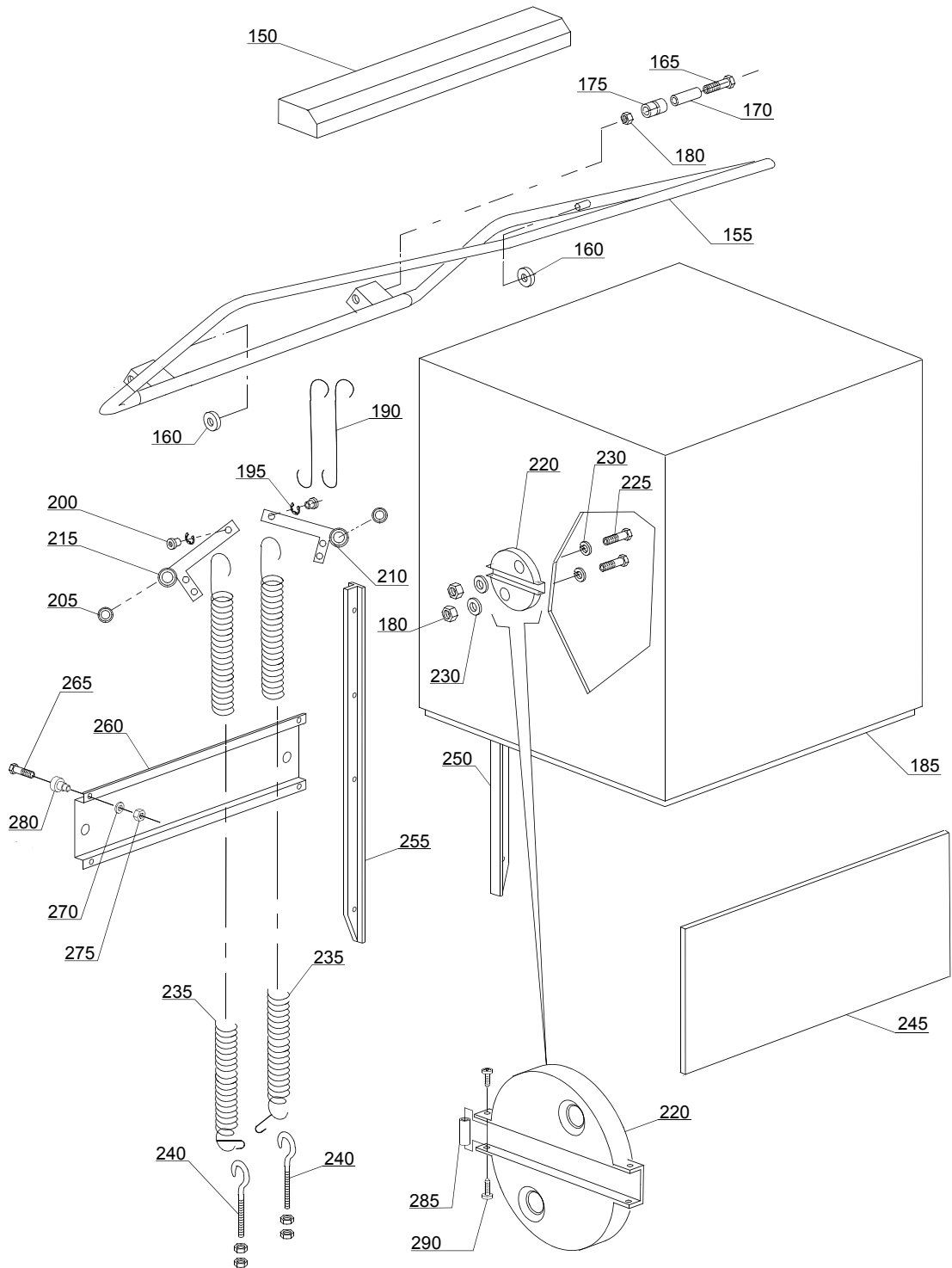
i=INSULATED HOOD, e=ELECTRONICAL CONTROL

H63E=H63E

bt=BREAK TANK, bp=BOOSTER PUMP, dvgw=DVGW, ws=WATER SOFTNER, dd=DETERGENT DISPENSER, dp=DRAIN PUMP

A=3/N/PE~380-400V 50-60Hz, D=3/PE~200-210V 50-60Hz, F=2/PE~220-240V 50-60Hz, G=3/N/PE~415V 50-60Hz, H=3/PE~220-230V 50-60Hz, K=3/PE~380-400V 50-60Hz, L=3/PE~415V 50-60Hz, M=3/PE~440V 60Hz, P=1/N/PE~220-230V 50-60Hz, R=2/PE~220-240V 50-60Hz, U=1/N/PE~240V 50-60Hz, V=3/PE~240V 50-60Hz, W=1/N/PE~100-110V 50-60Hz

02a202_e



Spare parts

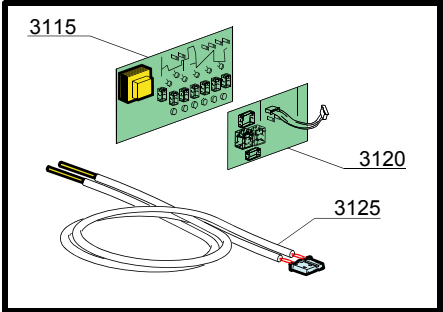
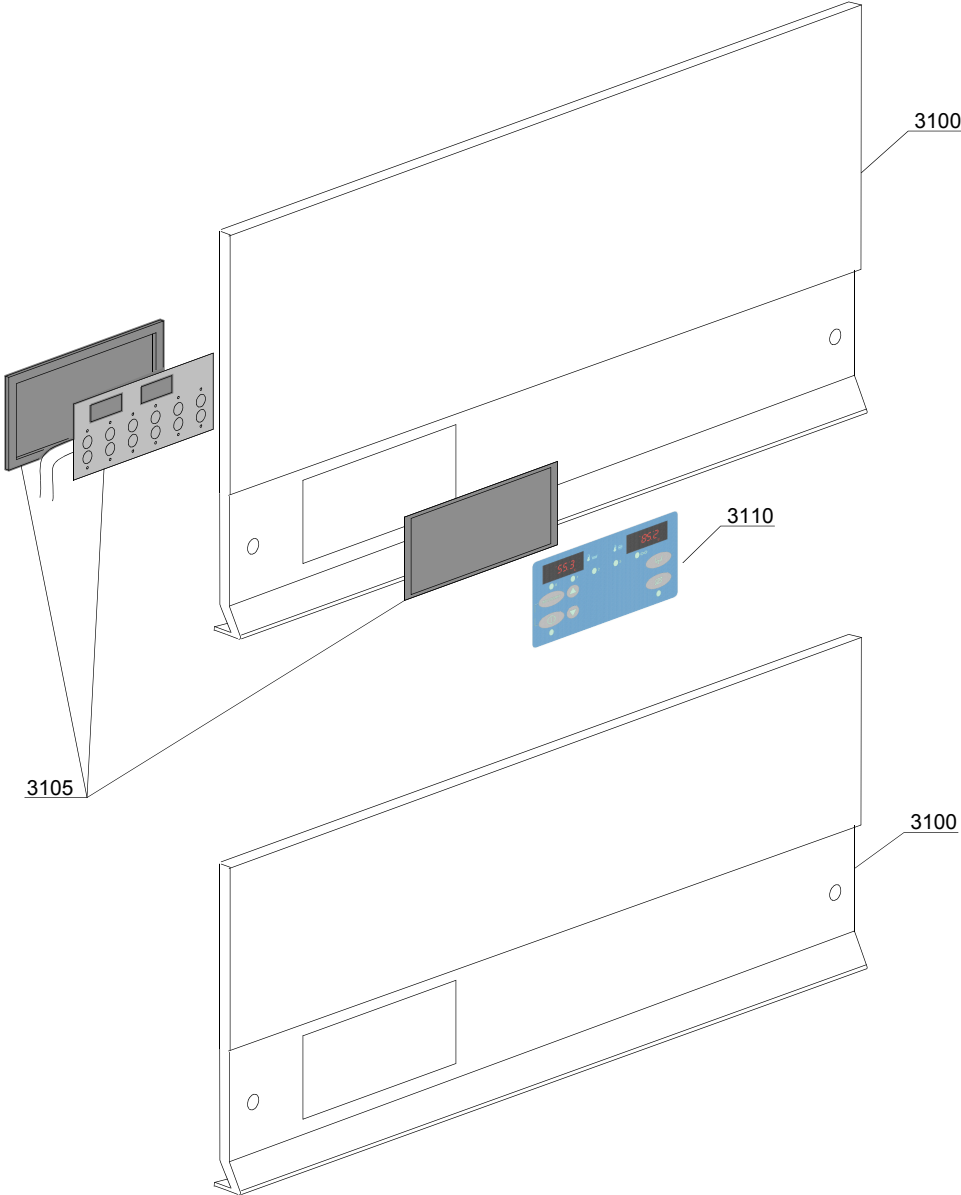
| ID | P-code | SN from | SN to | Mod. | Acces. | Volt | Description |
|-------------------------------|--------|---------|-------|------|--------|------|----------------------|
| Module:Closing panelig | | | | | | | |
| 290 | 11121 | | - | | | | M4x10 TCB Inox screw |

i=INSULATED HOOD, e=ELECTRONICAL CONTROL

H63E=H63E

bt=BREAK TANK, bp=BOOSTER PUMP, dvgw=DVGW, ws=WATER SOFTNER, dd=DETERGENT DISPENSER, dp=DRAIN PUMP

A=3/N/PE~380-400V 50-60Hz, D=3/PE~200-210V 50-60Hz, F=2/PE~220-240V 50-60Hz, G=3/N/PE~415V 50-60Hz, H=3/PE~220-230V 50-60Hz, K=3/PE~380-400V 50-60Hz, L=3/PE~415V 50-60Hz, M=3/PE~440V 60Hz, P=1/N/PE~220-230V 50-60Hz, R=2/PE~220-240V 50-60Hz, U=1/N/PE~240V 50-60Hz, V=3/PE~240V 50-60Hz, W=1/N/PE~100-110V 50-60Hz



03_008_e

Spare parts

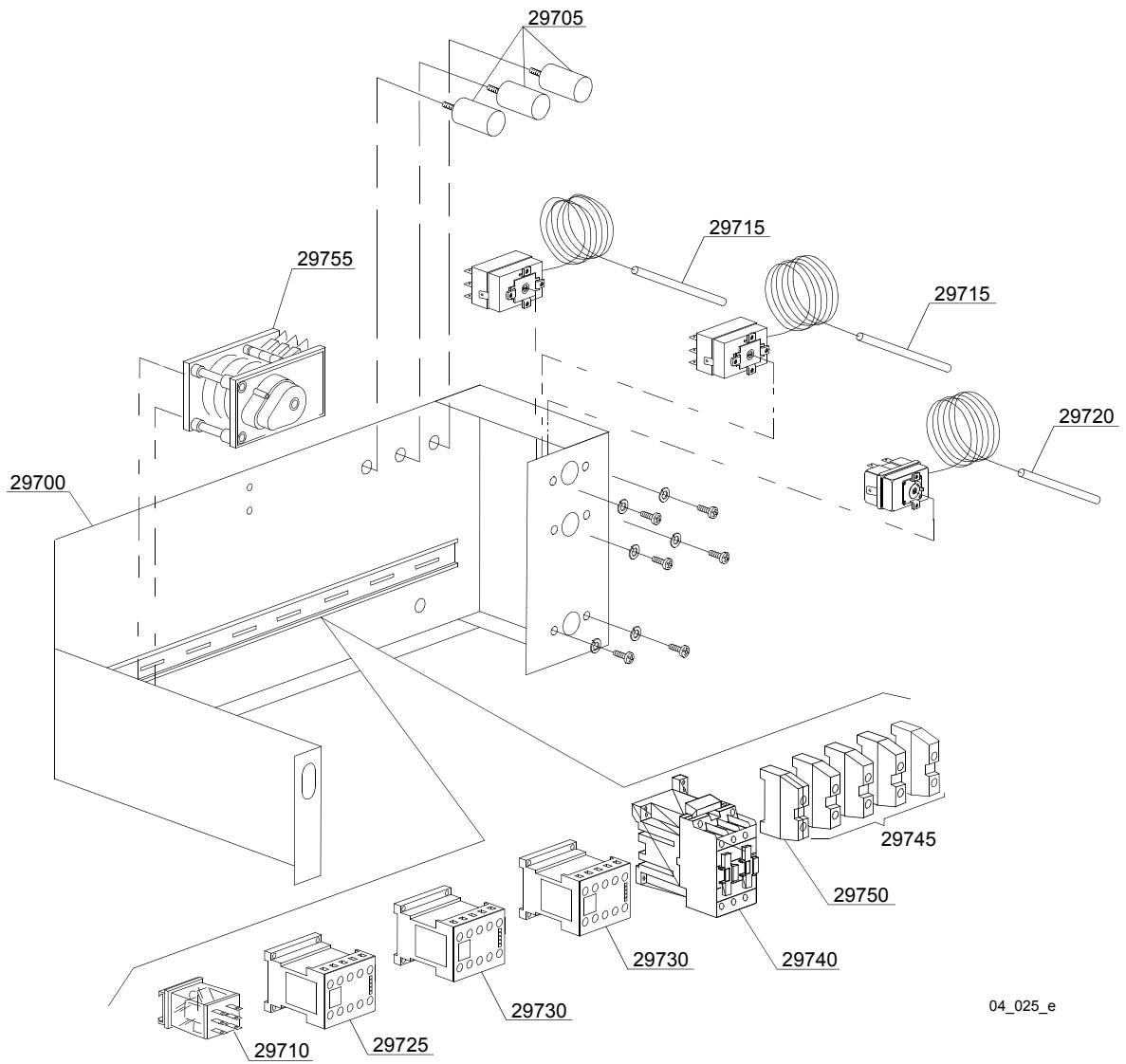
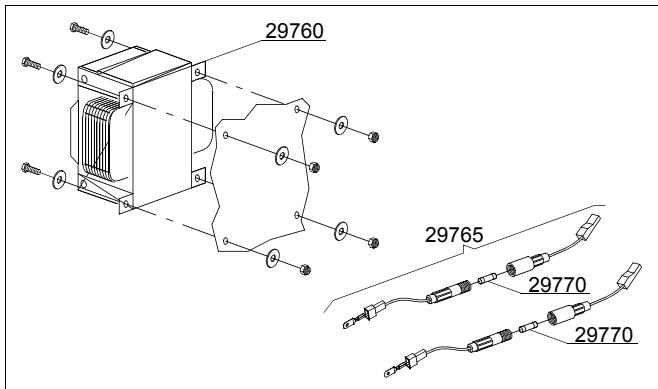
| ID | P-code | SN from | SN to | Mod. | Acces. | Volt | Description |
|--|---------|---------|-------|------|--------|------|--|
| Module:Control panel and switches | | | | | | | |
| 3105 | 50570 | | - | e | | | Compleat membrane push button-driver |
| 3105 | 50570/B | | - | e | | | Compleat membrane push button-driver PLUS |
| 3110 | 50571 | | - | e | dp,ws | | Silkscreen processed grill membrane push button-driver dp+ws |
| 3110 | 50575 | | - | e | dp,ws | | Neutral silkscreen processed grill membrane push button-driver dp+ws |
| 3115 | 50569 | | - | e | | | Electronic card without chip |
| 3120 | 50559 | | - | e | dp | | Circuit board Exp-Ps |
| 3120 | 50568 | | - | e | ws | | Circuit board Exp-Dep |
| 3125 | 50562 | | - | e | | | Sensor |

i=INSULATED HOOD, e=ELECTRONICAL CONTROL

H63E=H63E

bt=BREAK TANK, bp=BOOSTER PUMP, dvgw=DVGW, ws=WATER SOFTNER, dd=DETERGENT DISPENSER, dp=DRAIN PUMP

A=3/N/PE~380-400V 50-60Hz, D=3/PE~200-210V 50-60Hz, F=2/PE~220-240V 50-60Hz, G=3/N/PE~415V 50-60Hz, H=3/PE~220-230V 50-60Hz, K=3/PE~380-400V 50-60Hz, L=3/PE~415V 50-60Hz, M=3/PE~440V 60Hz, P=1/N/PE~220-230V 50-60Hz, R=2/PE~220-240V 50-60Hz, U=1/N/PE~240V 50-60Hz, V=3/PE~240V 50-60Hz, W=1/N/PE~100-110V 50-60Hz



04_025_e

Spare parts

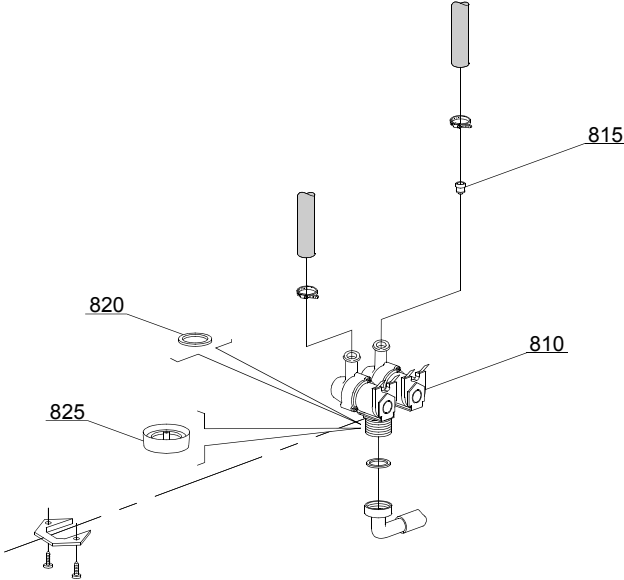
| ID | P-code | SN from | SN to | Mod. | Acces. | Volt | Description |
|---|----------|---------|-------|------|--------|------|----------------------------------|
| Module:Electric control components | | | | | | | |
| 29700 | 11600955 | | - | e | | | Electric component panel |
| 29705 | 15149 | | - | e | | | Low noise filter |
| 29710 | 560302 | | - | e | ws | | Relay 230V 50/60Hz |
| 29720 | 2000430 | | - | e | | | Overheat protector |
| 29725 | 10300392 | | - | e | | | 3NA/1NC contactor - 240Vac 50Hz |
| 29730 | 15086 | | - | e | | | Contactor TLV, TLB |
| 29730 | 15086/B | | - | e | | | Contactor 240V 50Hz |
| 29740 | 10300050 | | - | e | | | Contactor TLP |
| 29740 | 10300052 | | - | e | | | 36A/20A contactor - 230V 50/60HZ |
| 29740 | 10300054 | | - | e | | | 25A/16A contactor - 230V 50/60HZ |
| 29745 | 10300401 | | - | e | | | Connecting piece |
| 29750 | 10300403 | | - | e | | | Connecting piece |

i=INSULATED HOOD, e=ELECTRONICAL CONTROL

H63E=H63E

bt=BREAK TANK, bp=BOOSTER PUMP, dvgw=DVGW, ws=WATER SOFTNER, dd=DETERGENT DISPENSER, dp=DRAIN PUMP

A=3/N/PE~380-400V 50-60Hz, D=3/PE~200-210V 50-60Hz, F=2/PE~220-240V 50-60Hz, G=3/N/PE~415V 50-60Hz, H=3/PE~220-230V 50-60Hz, K=3/PE~380-400V 50-60Hz, L=3/PE~415V 50-60Hz, M=3/PE~440V 60Hz, P=1/N/PE~220-230V 50-60Hz, R=2/PE~220-240V 50-60Hz, U=1/N/PE~240V 50-60Hz, V=3/PE~240V 50-60Hz, W=1/N/PE~100-110V 50-60Hz



05_003_e

Spare parts

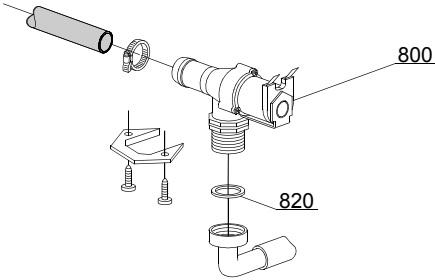
| ID | P-code | SN from | SN to | Mod. | Acces. | Volt | Description |
|------------------------------------|--------|---------|-------|------|--------|------|-------------------------------|
| Module:Solenoid valve group | | | | | | | |
| 810 | 15098 | | - | i | ws | | Double solenoid valve - Ø10 |
| 815 | 15115 | | - | i | ws | | Green pression solenoid valve |
| 820 | N.C. | | - | i | ws | | Pression reducing valve |

i=INSULATED HOOD, e=ELECTRONICAL CONTROL

H63E=H63E

bt=BREAK TANK, bp=BOOSTER PUMP, dvgw=DVGW, ws=WATER SOFTNER, dd=DETERGENT DISPENSER, dp=DRAIN PUMP

A=3/N/PE~380-400V 50-60Hz, D=3/PE~200-210V 50-60Hz, F=2/PE~220-240V 50-60Hz, G=3/N/PE~415V 50-60Hz, H=3/PE~220-230V 50-60Hz, K=3/PE~380-400V 50-60Hz, L=3/PE~415V 50-60Hz, M=3/PE~440V 60Hz, P=1/N/PE~220-230V 50-60Hz, R=2/PE~220-240V 50-60Hz, U=1/N/PE~240V 50-60Hz, V=3/PE~240V 50-60Hz, W=1/N/PE~100-110V 50-60Hz



05_005_e

Spare parts

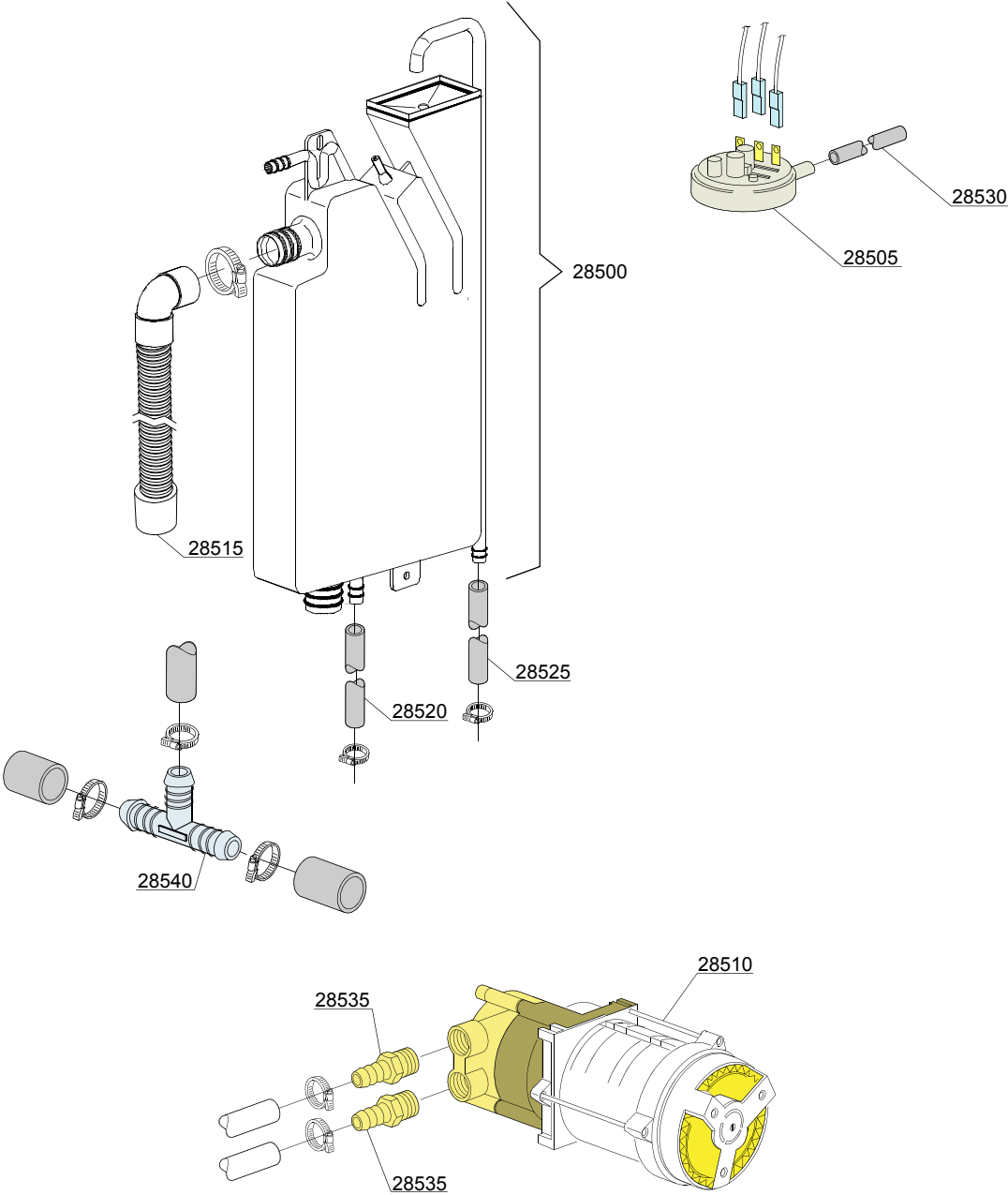
| ID | P-code | SN from | SN to | Mod. | Acces. | Volt | Description |
|------------------------------------|----------|---------|-------|------|--------|------|-------------------------|
| Module:Solenoid valve group | | | | | | | |
| 800 | 30001000 | | - | i | | | Solenoid valve |
| 820 | N.C. | | - | i | | | Pression reducing valve |

i=INSULATED HOOD, e=ELECTRONICAL CONTROL

H63E=H63E

bt=BREAK TANK, bp=BOOSTER PUMP, dvgw=DVGW, ws=WATER SOFTNER, dd=DETERGENT DISPENSER, dp=DRAIN PUMP

A=3/N/PE~380-400V 50-60Hz, D=3/PE~200-210V 50-60Hz, F=2/PE~220-240V 50-60Hz, G=3/N/PE~415V 50-60Hz, H=3/PE~220-230V 50-60Hz, K=3/PE~380-400V 50-60Hz, L=3/PE~415V 50-60Hz, M=3/PE~440V 60Hz, P=1/N/PE~220-230V 50-60Hz, R=2/PE~220-240V 50-60Hz, U=1/N/PE~240V 50-60Hz, V=3/PE~240V 50-60Hz, W=1/N/PE~100-110V 50-60Hz



06_004pe

Spare parts

| ID | P-code | SN from | SN to | Mod. | Acces. | Volt | Description |
|--------------------------|----------|---------|-------|------|--------|------|---|
| Module:Break Tank | | | | | | | |
| 28500 | 15720 | | - | e,i | bt | | Break tank assembly |
| 28505 | 10706/A | | - | e,i | bt | | 47-27 pressure switch |
| 28510 | 15100/D | | - | e,i | bt | | Booster pump 220/240V - body pumps in brass |
| 28515 | 15722 | | - | e,i | bt | | BT middle pipe L=920 |
| 28520 | 2907350 | | - | e,i | bt | | 12x20 EPDM rubber hose |
| 28525 | 2907352 | | - | e,i | bt | | PVC WRAS rubber hose |
| 28530 | 14508 | | - | e,i | bt | | 4,5x9 EPDM rubber hose (minimum 2 mt) |
| 28535 | 10221311 | | - | e,i | bt | | Rubber holder Ø 12 3/8G |
| 28540 | 540098 | | | e,i | bt | | 3 ways D25 |

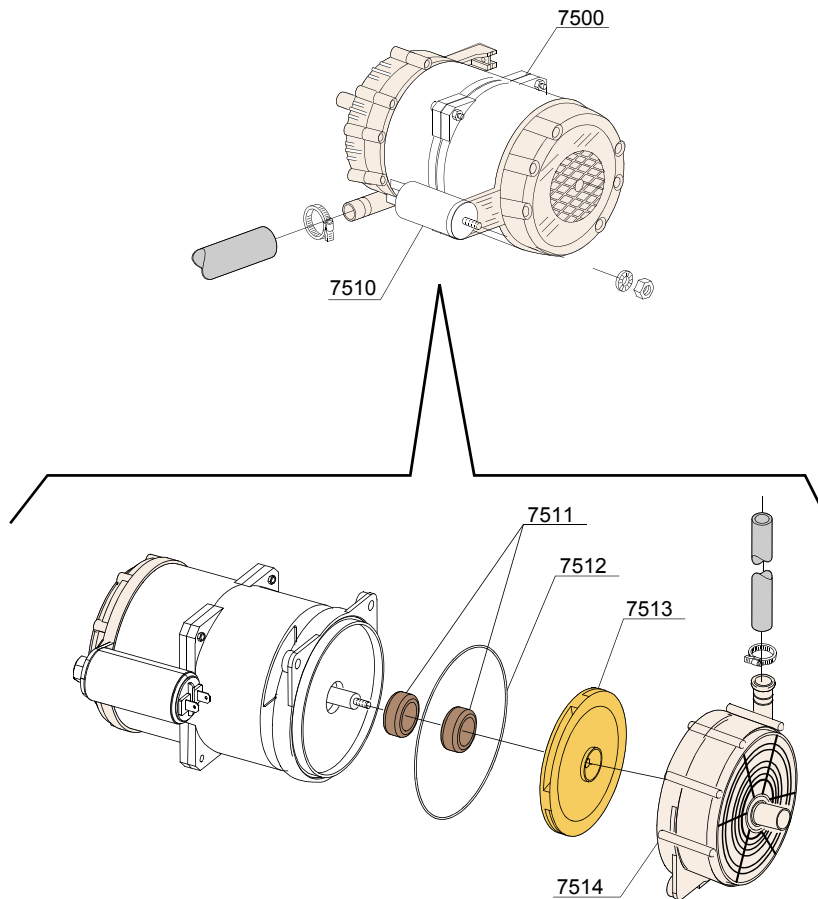
i=INSULATED HOOD, e=ELECTRONICAL CONTROL

H63E=H63E

bt=BREAK TANK, bp=BOOSTER PUMP, dvgw=DVGW, ws=WATER SOFTNER, dd=DETERGENT DISPENSER, dp=DRAIN PUMP

A=3/N/PE~380-400V 50-60Hz, D=3/PE~200-210V 50-60Hz, F=2/PE~220-240V 50-60Hz, G=3/N/PE~415V 50-60Hz, H=3/PE~220-230V 50-60Hz, K=3/PE~380-400V 50-60Hz, L=3/PE~415V 50-60Hz, M=3/PE~440V 60Hz, P=1/N/PE~220-230V 50-60Hz, R=2/PE~220-240V 50-60Hz, U=1/N/PE~240V 50-60Hz, V=3/PE~240V 50-60Hz, W=1/N/PE~100-110V 50-60Hz

07_003_e



VERSIONE BREAK TANK / VERSIONE PLUS
BREAK TANK VERSION / SYSTEM PLUS VERSION
VERSION BREAK TANK / VERSION SYSTEME PLUS

Spare parts

| ID | P-code | SN from | SN to | Mod. | Acces. | Volt | Description |
|----------------------------|----------|---------|-------|------|--------|------|---|
| Module:Booster pump | | | | | | | |
| 7500 | 15100/DO | | - | e,i | bp | | Booster pump 220/240V - body pumps in plastic |
| 7510 | 10702 | | - | e,i | bp | | 5 uF condenser - 450V |
| 7511 | 15100/S | | - | e,i | bp | | Rotating seals |
| 7512 | 15100/T | | - | e,i | bp | | OR (O-ring) gasket EPDM |
| 7513 | 15100/U | | - | e,i | bp | | Pump rotor |
| 7514 | 15100/V | | - | e,i | bp | | Scroll |

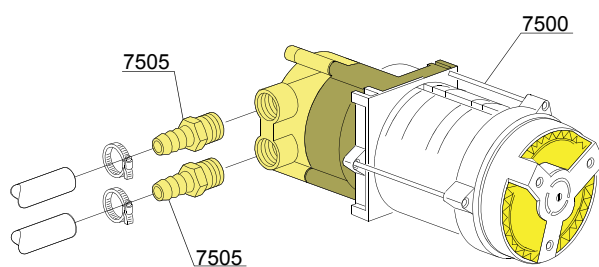
i=INSULATED HOOD, e=ELECTRONICAL CONTROL

H63E=H63E

bt=BREAK TANK, bp=BOOSTER PUMP, dvgw=DVGW, ws=WATER SOFTNER, dd=DETERGENT DISPENSER, dp=DRAIN PUMP

A=3/N/PE~380-400V 50-60Hz, D=3/PE~200-210V 50-60Hz, F=2/PE~220-240V 50-60Hz, G=3/N/PE~415V 50-60Hz, H=3/PE~220-230V 50-60Hz, K=3/PE~380-400V 50-60Hz, L=3/PE~415V 50-60Hz, M=3/PE~440V 60Hz, P=1/N/PE~220-230V 50-60Hz, R=2/PE~220-240V 50-60Hz, U=1/N/PE~240V 50-60Hz, V=3/PE~240V 50-60Hz, W=1/N/PE~100-110V 50-60Hz

07_003ae



VERSIONE STANDARD / VERSIONE POMPA AUM. PRESSIONE
STANDARD VERSION / BOOSTER PUMP VERSION
VERSION STANDARD / VERSION POMPE AUGMENT. PRESSION

Spare parts

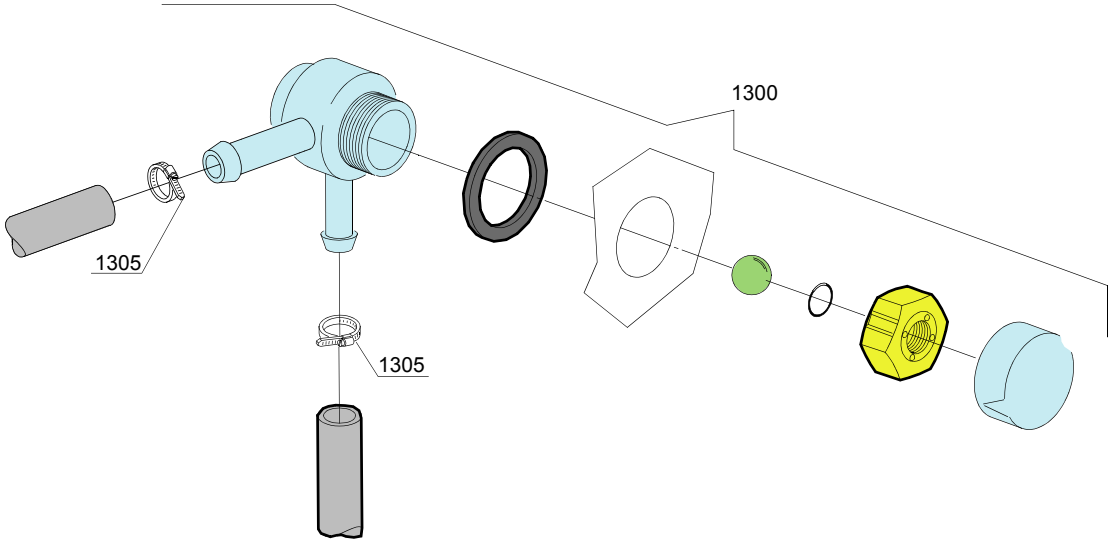
| ID | P-code | SN from | SN to | Mod. | Acces. | Volt | Description |
|----------------------------|----------|---------|-------|-------|--------|------|---|
| Module:Booster pump | | | | | | | |
| 7500 | 15100/D | | - | e,i,i | bp | | Booster pump 220/240V - body pumps in brass |
| 7505 | 10221311 | | - | e,i,i | bp | | Rubber holder Ø 12 3/8G |

i=INSULATED HOOD, e=ELECTRONICAL CONTROL

H63E=H63E

bt=BREAK TANK, bp=BOOSTER PUMP, dvgw=DVGW, ws=WATER SOFTNER, dd=DETERGENT DISPENSER, dp=DRAIN PUMP

A=3/N/PE~380-400V 50-60Hz, D=3/PE~200-210V 50-60Hz, F=2/PE~220-240V 50-60Hz, G=3/N/PE~415V 50-60Hz, H=3/PE~220-230V 50-60Hz, K=3/PE~380-400V 50-60Hz, L=3/PE~415V 50-60Hz, M=3/PE~440V 60Hz, P=1/N/PE~220-230V 50-60Hz, R=2/PE~220-240V 50-60Hz, U=1/N/PE~240V 50-60Hz, V=3/PE~240V 50-60Hz, W=1/N/PE~100-110V 50-60Hz



Spare parts

| ID | P-code | SN from | SN to | Mod. | Acces. | Volt | Description |
|--------------------|---------|---------|-------|------|--------|------|---------------|
| Module:DVGW | | | | | | | |
| 1300 | 9814351 | | - | | dvgw | | DVGW assembly |
| 1305 | 11807 | | - | | dvgw | | Clamp 12/22 |

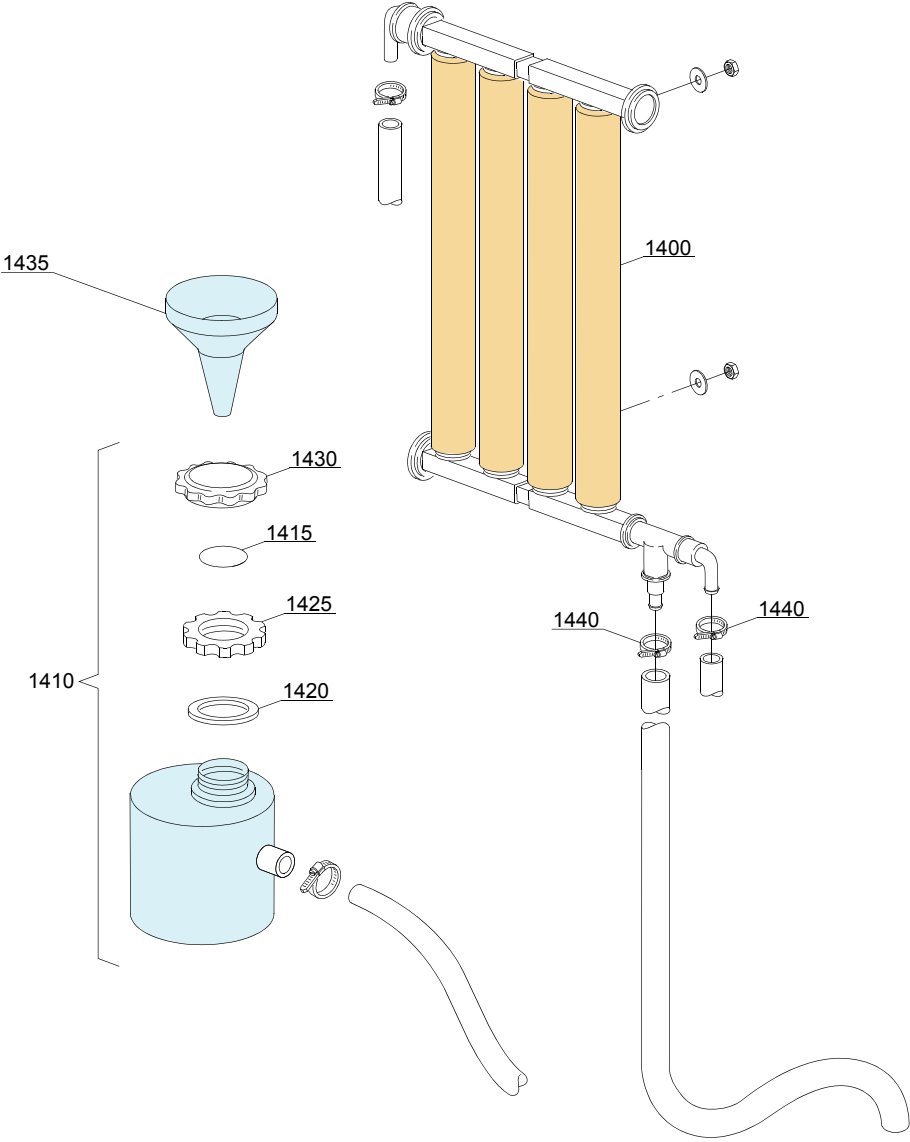
i=INSULATED HOOD, e=ELECTRONICAL CONTROL

H63E=H63E

bt=BREAK TANK, bp=BOOSTER PUMP, dvgw=DVGW, ws=WATER SOFTNER, dd=DETERGENT DISPENSER, dp=DRAIN PUMP

A=3/N/PE~380-400V 50-60Hz, D=3/PE~200-210V 50-60Hz, F=2/PE~220-240V 50-60Hz, G=3/N/PE~415V 50-60Hz, H=3/PE~220-230V 50-60Hz, K=3/PE~380-400V 50-60Hz, L=3/PE~415V 50-60Hz, M=3/PE~440V 60Hz, P=1/N/PE~220-230V 50-60Hz, R=2/PE~220-240V 50-60Hz, U=1/N/PE~240V 50-60Hz, V=3/PE~240V 50-60Hz, W=1/N/PE~100-110V 50-60Hz

09_001_e



Spare parts

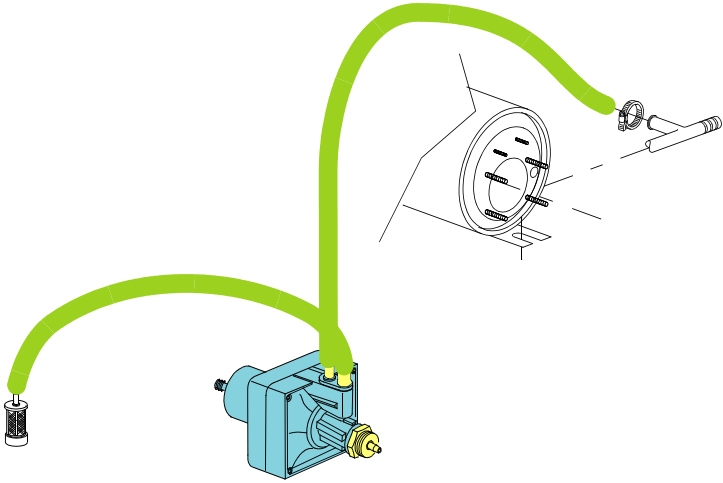
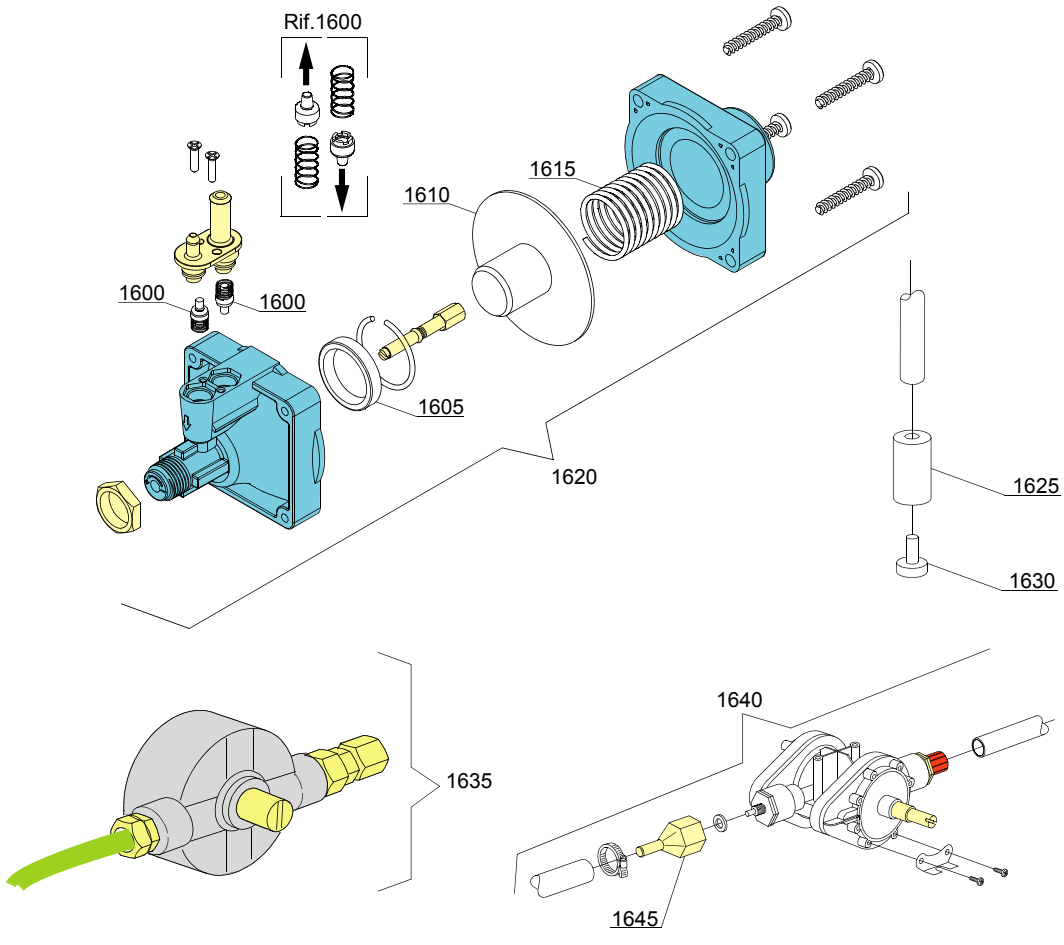
| ID | P-code | SN from | SN to | Mod. | Acces. | Volt | Description |
|------------------------------------|---------|---------|-------|------|--------|------|--------------------------|
| Module: Water softner group | | | | | | | |
| 1400 | 16066 | | - | | ws | | 4 elements water softner |
| 1405 | 16070 | | - | | ws | | Nonreturn valve |
| 1410 | 16065 | | - | | ws | | Salt container |
| 1415 | 16067/A | | - | | ws | | OR O-ring |
| 1420 | 16067/B | | - | | ws | | O-ring |
| 1425 | 16067/C | | - | | ws | | Ring nut |
| 1430 | 16067/D | | - | | ws | | Plug |
| 1435 | 16082 | | - | | ws | | Funnel |

i=INSULATED HOOD, e=ELECTRONICAL CONTROL

H63E=H63E

bt=BREAK TANK, bp=BOOSTER PUMP, dvgw=DVGW, ws=WATER SOFTNER, dd=DETERGENT DISPENSER, dp=DRAIN PUMP

A=3/N/PE~380-400V 50-60Hz, D=3/PE~200-210V 50-60Hz, F=2/PE~220-240V 50-60Hz, G=3/N/PE~415V 50-60Hz, H=3/PE~220-230V 50-60Hz, K=3/PE~380-400V 50-60Hz, L=3/PE~415V 50-60Hz, M=3/PE~440V 60Hz, P=1/N/PE~220-230V 50-60Hz, R=2/PE~220-240V 50-60Hz, U=1/N/PE~240V 50-60Hz, V=3/PE~240V 50-60Hz, W=1/N/PE~100-110V 50-60Hz



10_003_e

Spare parts

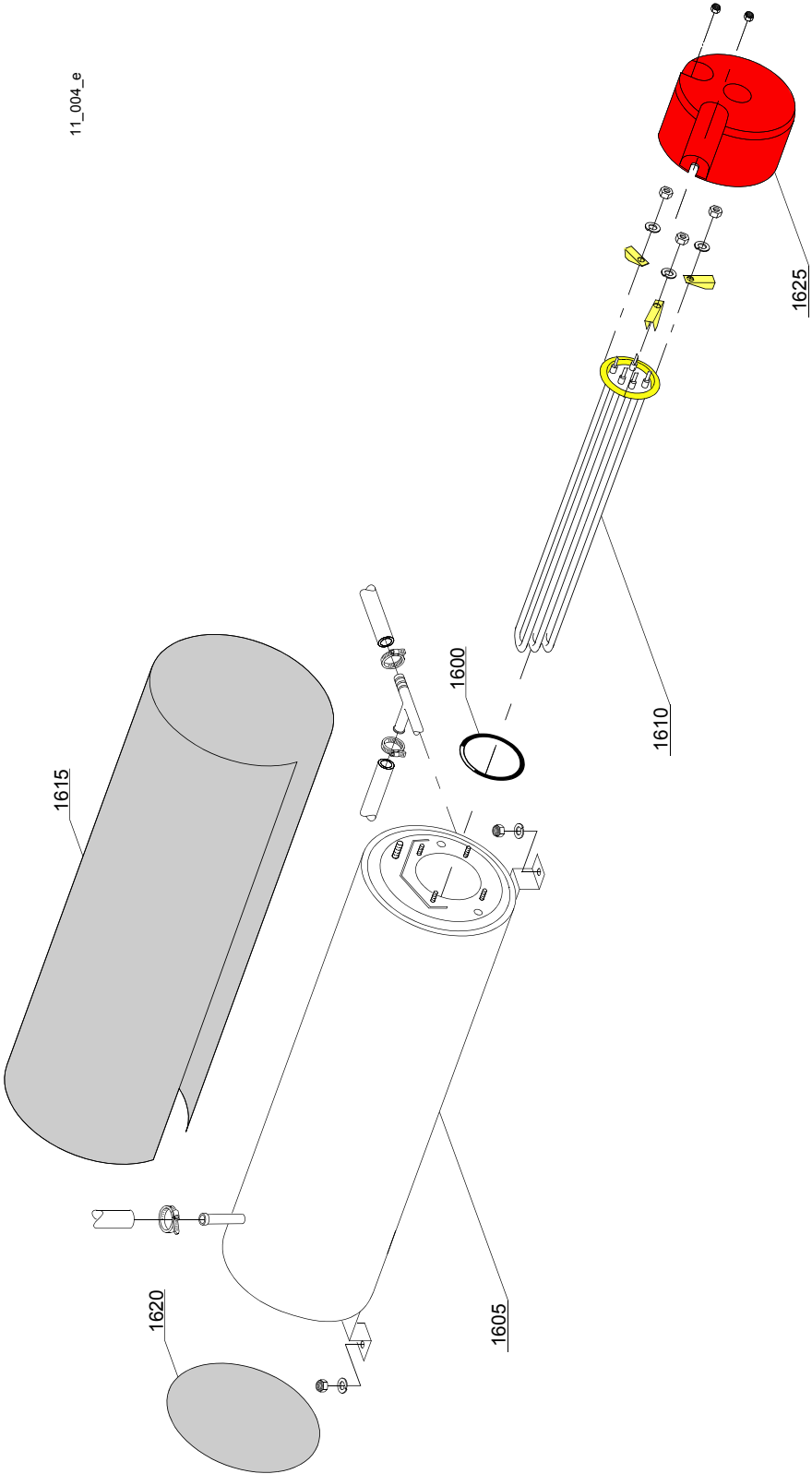
| ID | P-code | SN from | SN to | Mod. | Acces. | Volt | Description |
|--|----------|---------|-------|------|--------|------|----------------------------|
| Module: Rinse aid dispenser group | | | | | | | |
| 1600 | 10805 | | - | | | | Tecnopro non return valve |
| 1605 | 10806 | | - | | | | Ø22 O-ring |
| 1610 | 10807 | | - | | | | Membrane |
| 1615 | 10808 | | - | | | | Spring |
| 1620 | 10599999 | | - | | | | Rinse aid dispenser |
| 1625 | 12525 | | - | | | | Counter-weight |
| 1630 | 15058 | | - | | | | Small filter |
| 1635 | 10799 | | - | | | | GERMAC rinse aid dispenser |
| 1640 | 10798 | | - | | | | LANG rinse aid dispenser |
| 1645 | 10798/B | | - | | | | Brass pipe fitting |

i=INSULATED HOOD, e=ELECTRONICAL CONTROL

H63E=H63E

bt=BREAK TANK, bp=BOOSTER PUMP, dvgw=DVGW, ws=WATER SOFTNER, dd=DETERGENT DISPENSER, dp=DRAIN PUMP

A=3/N/PE~380-400V 50-60Hz, D=3/PE~200-210V 50-60Hz, F=2/PE~220-240V 50-60Hz, G=3/N/PE~415V 50-60Hz, H=3/PE~220-230V 50-60Hz, K=3/PE~380-400V 50-60Hz, L=3/PE~415V 50-60Hz, M=3/PE~440V 60Hz, P=1/N/PE~220-230V 50-60Hz, R=2/PE~220-240V 50-60Hz, U=1/N/PE~240V 50-60Hz, V=3/PE~240V 50-60Hz, W=1/N/PE~100-110V 50-60Hz



Spare parts

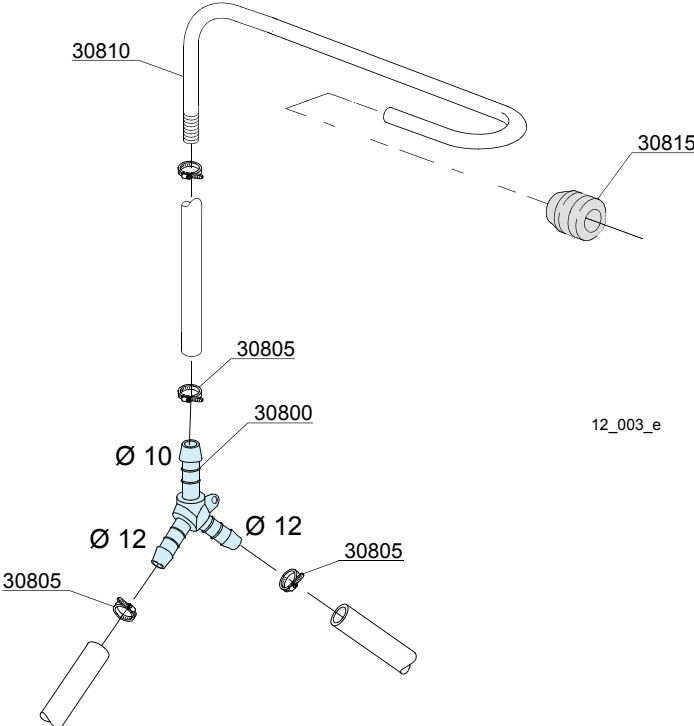
| ID | P-code | SN from | SN to | Mod. | Acces. | Volt | Description |
|----------------------------|----------|---------|-------|------|--------|------|-----------------------|
| Module:Boiler group | | | | | | | |
| 1600 | 13015 | | - | | | | O-ring |
| 1605 | 22002 | | - | | | | Boiler |
| 1610 | 30001011 | | - | | | | Element 9kW |
| 1615 | 30002030 | | - | | | | Insulation boiler |
| 1620 | 75205 | | - | | | | Ø160 end piece |
| 1625 | 75311 | | - | | | | Heating element cover |

i=INSULATED HOOD, e=ELECTRONICAL CONTROL

H63E=H63E

bt=BREAK TANK, bp=BOOSTER PUMP, dvgw=DVGW, ws=WATER SOFTNER, dd=DETERGENT DISPENSER, dp=DRAIN PUMP

A=3/N/PE~380-400V 50-60Hz, D=3/PE~200-210V 50-60Hz, F=2/PE~220-240V 50-60Hz, G=3/N/PE~415V 50-60Hz, H=3/PE~220-230V 50-60Hz, K=3/PE~380-400V 50-60Hz, L=3/PE~415V 50-60Hz, M=3/PE~440V 60Hz, P=1/N/PE~220-230V 50-60Hz, R=2/PE~220-240V 50-60Hz, U=1/N/PE~240V 50-60Hz, V=3/PE~240V 50-60Hz, W=1/N/PE~100-110V 50-60Hz



Spare parts

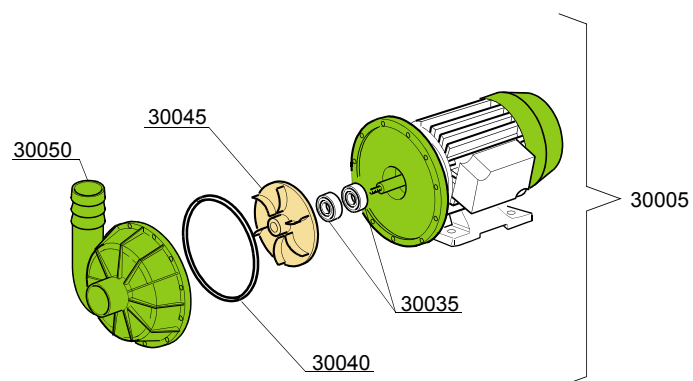
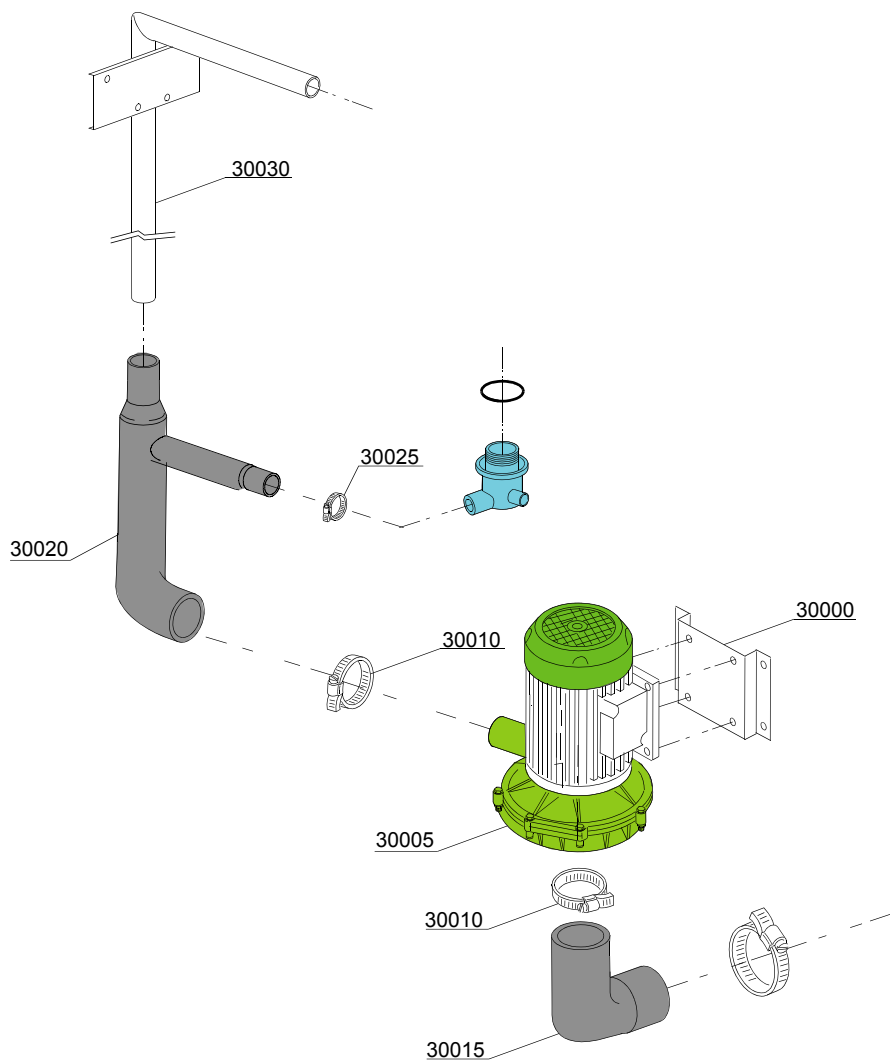
| ID | P-code | SN from | SN to | Mod. | Acces. | Volt | Description |
|---------------------------------|--------|---------|-------|------|--------|------|--|
| Module:3 ways connection | | | | | | | |
| 30800 | 540104 | | - | i | | | Ø10-12-12 mm plastic 3 ways connection |
| 30805 | 11807 | | - | i | | | Clamp |
| 30810 | 76082 | | - | i | | | Rinse pipe |
| 30815 | 13304 | | - | i | | | Pipe |

i=INSULATED HOOD, e=ELECTRONICAL CONTROL

H63E=H63E

bt=BREAK TANK, bp=BOOSTER PUMP, dvgw=DVGW, ws=WATER SOFTNER, dd=DETERGENT DISPENSER, dp=DRAIN PUMP

A=3/N/PE~380-400V 50-60Hz, D=3/PE~200-210V 50-60Hz, F=2/PE~220-240V 50-60Hz, G=3/N/PE~415V 50-60Hz, H=3/PE~220-230V 50-60Hz, K=3/PE~380-400V 50-60Hz, L=3/PE~415V 50-60Hz, M=3/PE~440V 60Hz, P=1/N/PE~220-230V 50-60Hz, R=2/PE~220-240V 50-60Hz, U=1/N/PE~240V 50-60Hz, V=3/PE~240V 50-60Hz, W=1/N/PE~100-110V 50-60Hz



13_120_e

Spare parts

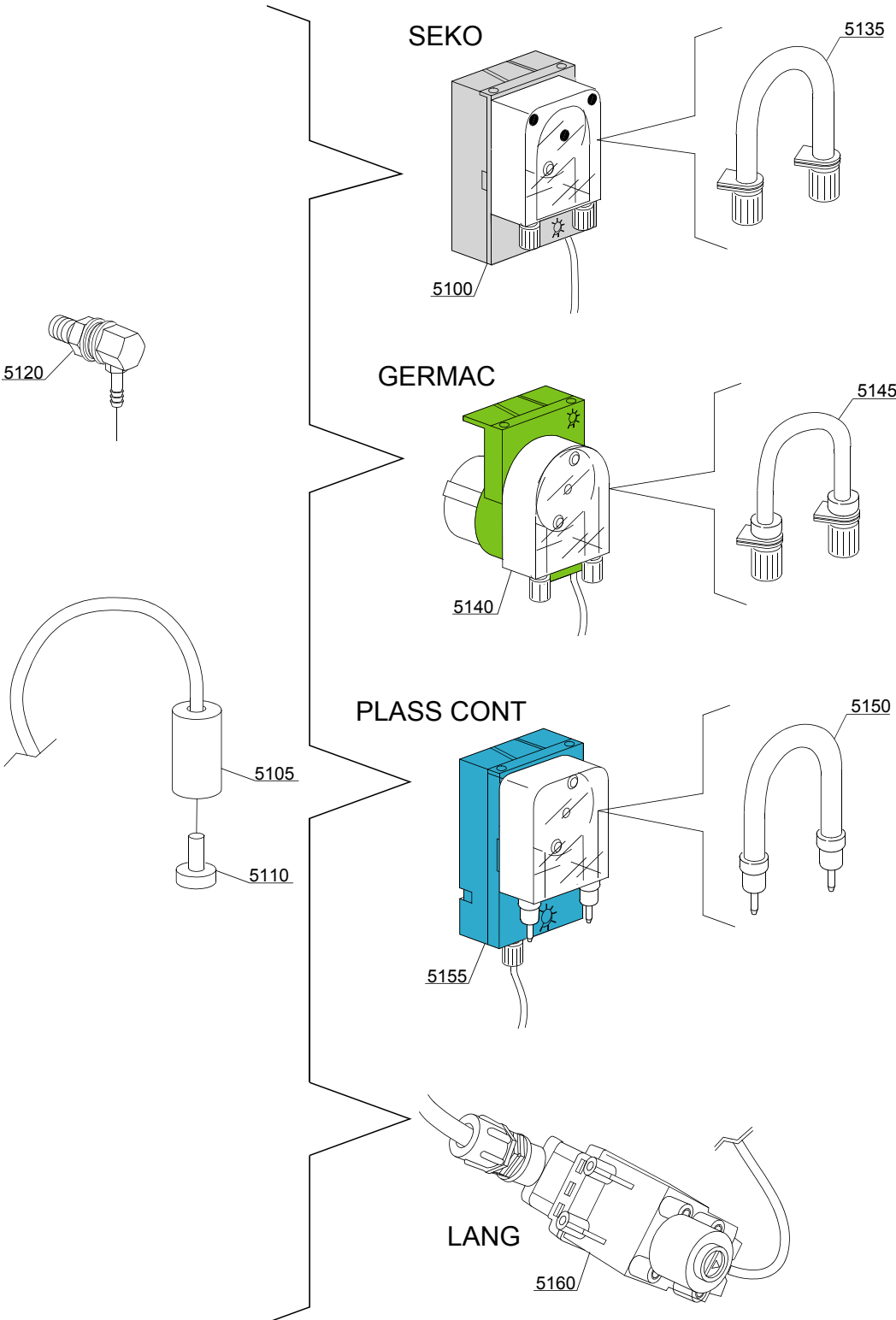
| ID | P-code | SN from | SN to | Mod. | Acces. | Volt | Description |
|--------------------------------|----------|---------|-------|------|--------|------|-------------------------------|
| Module: Wash pump group | | | | | | | |
| 30000 | 11600623 | | - | e | | | Pump base |
| 30005 | 22037 | | - | e | | | 2Hp pump 230/380/415 3Fh 50Hz |
| 30010 | 11824 | | - | e | | | 50/70 Clamp |
| 30015 | 11600100 | | - | e | | | Suction pipe coupling |
| 30020 | 11600101 | | - | e | | | Pressure rubber hose |
| 30025 | 11809 | | - | e | | | 30/45 Clamp |
| 30030 | 11600103 | | - | e | | | Wash ramp |
| 30035 | 15080 | | - | e | | | Rotating seals |
| 30040 | 10200290 | | - | e | | | OR 1225 O-ring |
| 30045 | 22045 | | - | e | | | Pump rotor (pump 2Hp) |
| 30050 | 10200222 | | - | e | | | Scroll |

i=INSULATED HOOD, e=ELECTRONICAL CONTROL

H63E=H63E

bt=BREAK TANK, bp=BOOSTER PUMP, dvgw=DVGW, ws=WATER SOFTNER, dd=DETERGENT DISPENSER, dp=DRAIN PUMP

A=3/N/PE~380-400V 50-60Hz, D=3/PE~200-210V 50-60Hz, F=2/PE~220-240V 50-60Hz, G=3/N/PE~415V 50-60Hz, H=3/PE~220-230V 50-60Hz, K=3/PE~380-400V 50-60Hz, L=3/PE~415V 50-60Hz, M=3/PE~440V 60Hz, P=1/N/PE~220-230V 50-60Hz, R=2/PE~220-240V 50-60Hz, U=1/N/PE~240V 50-60Hz, V=3/PE~240V 50-60Hz, W=1/N/PE~100-110V 50-60Hz



14_004_e

Spare parts

| ID | P-code | SN from | SN to | Mod. | Acces. | Volt | Description |
|--------------------------------------|----------|---------|-------|------|--------|------|-----------------------------------|
| Module:Dosing detergent group | | | | | | | |
| 5100 | 15985 | | - | i | dd | | Seko detergent pump |
| 5105 | 12525 | | - | i | dd | | Counter-weight |
| 5110 | 15058 | | - | i | dd | | Small filter |
| 5120 | 15123 | | - | i | dd | | Complet Steel injector |
| 5125 | 15159 | | - | i | dd | | OR O-ring |
| 5130 | 10200205 | | - | i | dd | | M12x1 stainless steel nut |
| 5135 | 15185 | | - | i | dd | | Seko thermoplastic pipe Ø 10 |
| 5140 | 15985 | | - | i | dd | | Germac detergent pump |
| 5145 | 15108/E | | - | i | dd | | Germac thermoplastic pipe Ø 8 |
| 5150 | 15985/A | | - | i | dd | | Ø 10 PLAS CONT thermoplastic pipe |
| 5155 | 15985 | | - | i | dd | | PLAS CONT detergent pump |
| 5160 | 15108/L | | - | i | dd | | LANG detergent pump |

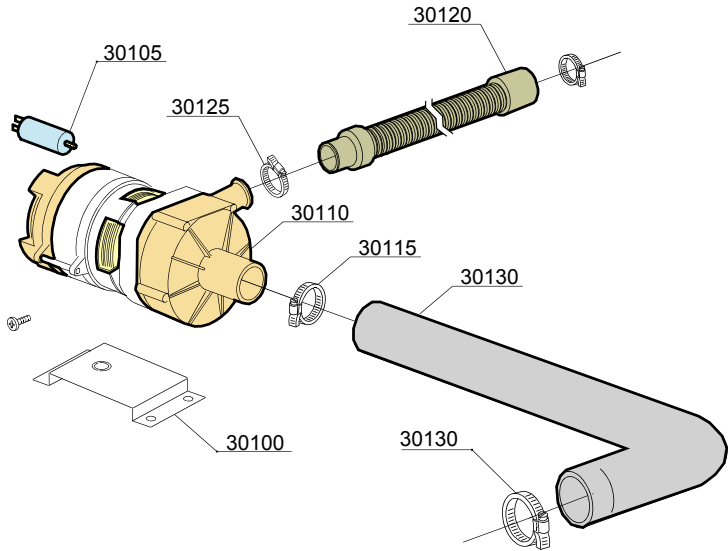
i=INSULATED HOOD, e=ELECTRONICAL CONTROL

H63E=H63E

bt=BREAK TANK, bp=BOOSTER PUMP, dvgw=DVGW, ws=WATER SOFTNER, dd=DETERGENT DISPENSER, dp=DRAIN PUMP

A=3/N/PE~380-400V 50-60Hz, D=3/PE~200-210V 50-60Hz, F=2/PE~220-240V 50-60Hz, G=3/N/PE~415V 50-60Hz, H=3/PE~220-230V 50-60Hz, K=3/PE~380-400V 50-60Hz, L=3/PE~415V 50-60Hz, M=3/PE~440V 60Hz, P=1/N/PE~220-230V 50-60Hz, R=2/PE~220-240V 50-60Hz, U=1/N/PE~240V 50-60Hz, V=3/PE~240V 50-60Hz, W=1/N/PE~100-110V 50-60Hz

15_005_e



Spare parts

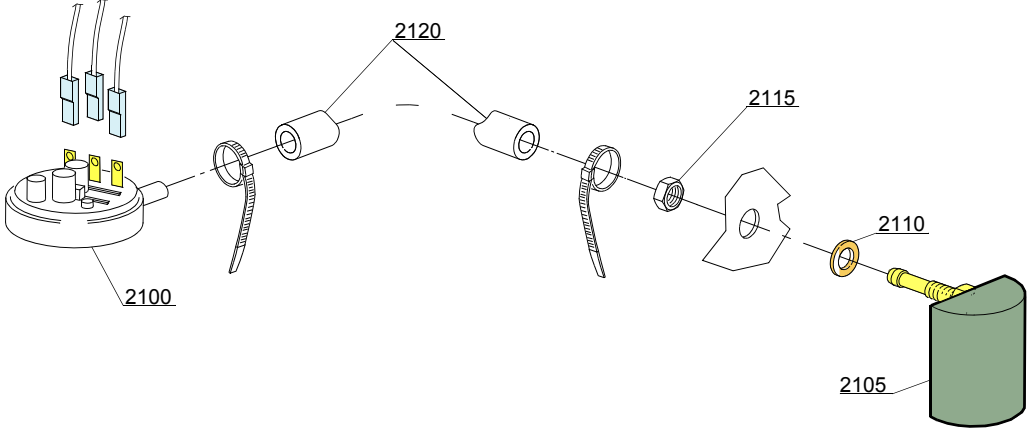
| ID | P-code | SN from | SN to | Mod. | Acces. | Volt | Description |
|--------------------------------|---------|---------|-------|------|--------|------|------------------------------|
| Module:Drain pump group | | | | | | | |
| 30100 | 440122 | | - | | dp | | Pump support |
| 30105 | 10702 | | - | | dp | | 5 uF condenser |
| 30110 | 10501/A | | - | | dp | | Drain pump (extra equipment) |
| 30115 | 11806 | | - | | dp | | 25/40 clamp |
| 30120 | 10727 | | - | | dp | | Drain pipe |
| 30125 | 11809 | | - | | dp | | Clamp |
| 30130 | 18788 | | - | | dp | | Drain rubber elbow |

i=INSULATED HOOD, e=ELECTRONICAL CONTROL

H63E=H63E

bt=BREAK TANK, bp=BOOSTER PUMP, dvgw=DVGW, ws=WATER SOFTNER, dd=DETERGENT DISPENSER, dp=DRAIN PUMP

A=3/N/PE~380-400V 50-60Hz, D=3/PE~200-210V 50-60Hz, F=2/PE~220-240V 50-60Hz, G=3/N/PE~415V 50-60Hz, H=3/PE~220-230V 50-60Hz, K=3/PE~380-400V 50-60Hz, L=3/PE~415V 50-60Hz, M=3/PE~440V 60Hz, P=1/N/PE~220-230V 50-60Hz, R=2/PE~220-240V 50-60Hz, U=1/N/PE~240V 50-60Hz, V=3/PE~240V 50-60Hz, W=1/N/PE~100-110V 50-60Hz



16_001_e

Spare parts

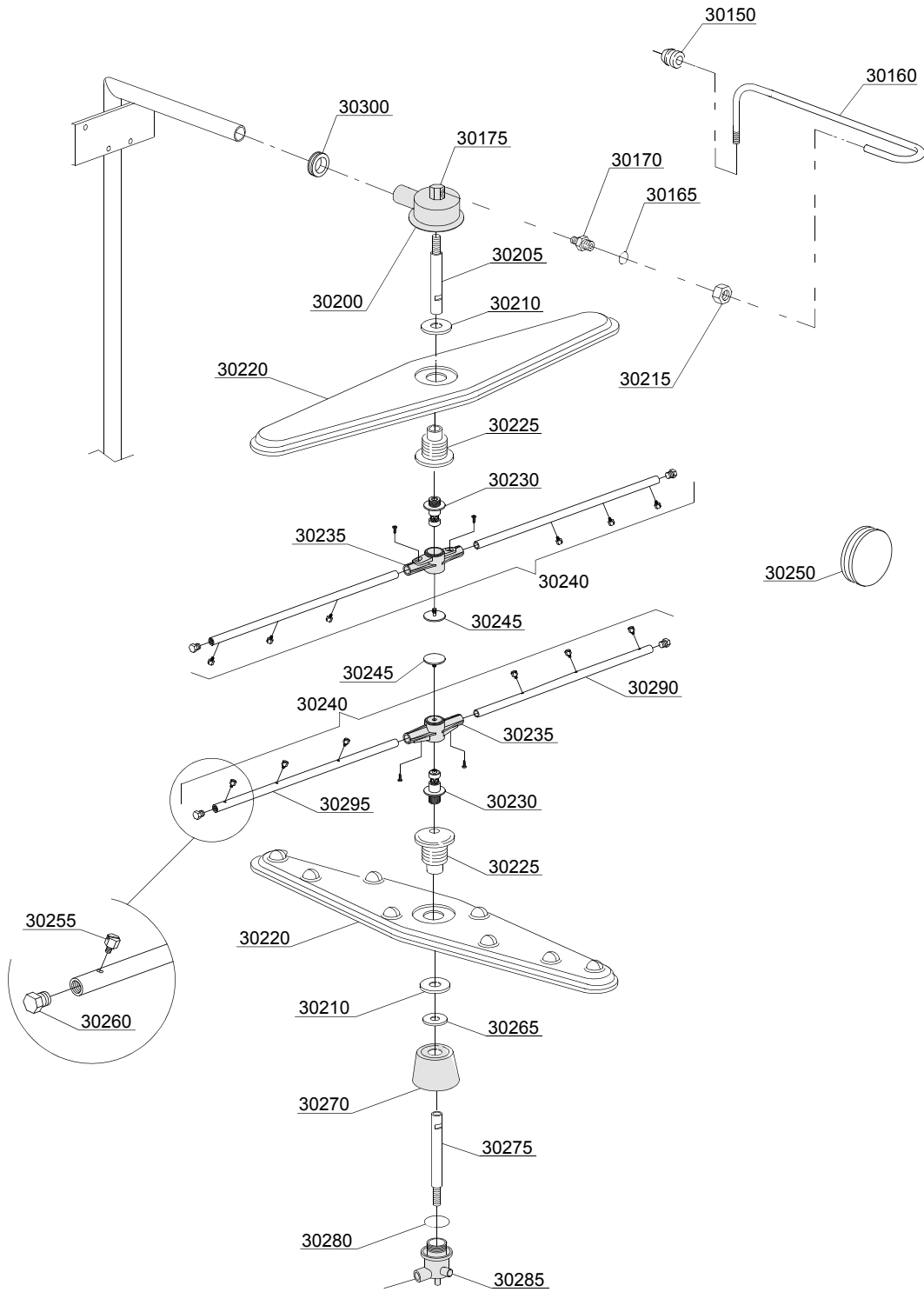
| ID | P-code | SN from | SN to | Mod. | Acces. | Volt | Description |
|---|----------|---------|-------|------|--------|------|--------------------|
| Module:Pressure switch group with air trap | | | | | | | |
| 2100 | 88110 | | - | | | | Pressure switch PR |
| 2105 | 135911 | | - | | | | Air trap |
| 2105 | 135911/B | | - | | | | Air trap |
| 2110 | 13301 | | - | | | | Gasket |
| 2115 | 11702 | | - | | | | Nut |

i=INSULATED HOOD, e=ELECTRONICAL CONTROL

H63E=H63E

bt=BREAK TANK, bp=BOOSTER PUMP, dvgw=DVGW, ws=WATER SOFTNER, dd=DETERGENT DISPENSER, dp=DRAIN PUMP

A=3/N/PE~380-400V 50-60Hz, D=3/PE~200-210V 50-60Hz, F=2/PE~220-240V 50-60Hz, G=3/N/PE~415V 50-60Hz, H=3/PE~220-230V 50-60Hz, K=3/PE~380-400V 50-60Hz, L=3/PE~415V 50-60Hz, M=3/PE~440V 60Hz, P=1/N/PE~220-230V 50-60Hz, R=2/PE~220-240V 50-60Hz, U=1/N/PE~240V 50-60Hz, V=3/PE~240V 50-60Hz, W=1/N/PE~100-110V 50-60Hz



17_125_e

Spare parts

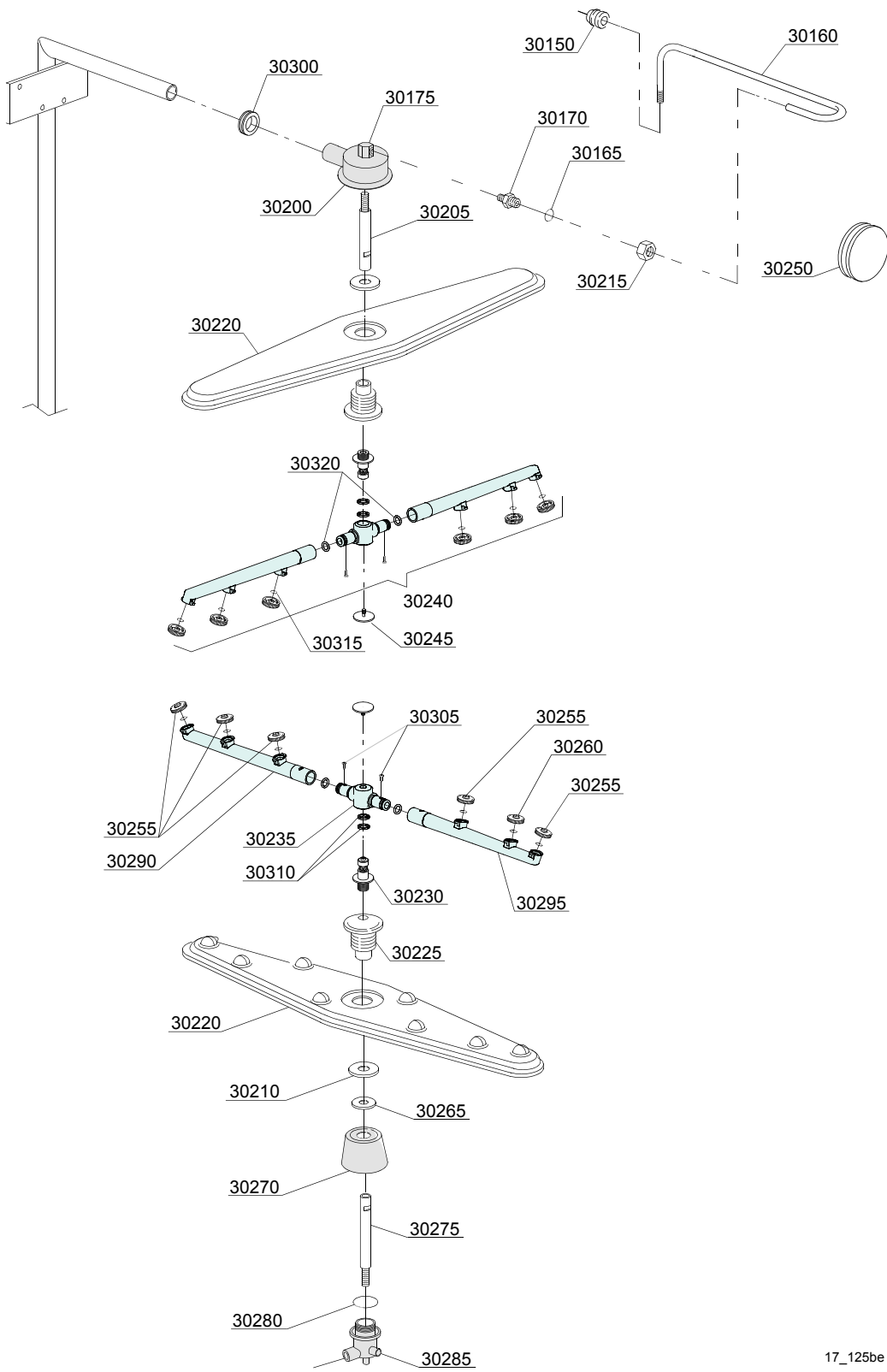
| ID | P-code | SN from | SN to | Mod. | Acces. | Volt | Description |
|---|----------|---------|---------|------|--------|------|---|
| Module:Turret group with rotating arms | | | | | | | |
| 30150 | 13304 | 4025782 | - | e | | | Pipe |
| 30160 | 76082 | 4025782 | - | e | | | Pipe gasket |
| 30165 | 13003 | | - | e | | | OR 112 NBR O-ring |
| 30170 | 12006 | | - | e | | | Coupling |
| 30175 | 75319 | | - | e | | | Elbow coupling |
| 30200 | 78001 | | - | e | | | Distributor upper |
| 30205 | 75322 | | - | e | | | Shaft, upper |
| 30210 | 75317 | | - | e | | | Nut |
| 30215 | 12006/A | | - | e | | | Ø10 pipe fitting 3/8x3,5 nut 19 hexagonal |
| 30220 | 10600900 | | - | e | | | Wash arm |
| 30225 | 75320 | | - | e | | | Holder |
| 30230 | 10651 | | - | e | | | Rinse axle |
| 30235 | 10650 | | - | e | | | Rinse arm |
| 30240 | 75918 | | - | e | | | Rinse arm, compl. |
| 30245 | 10652 | | - | e | | | Rinse arm screw |
| 30250 | 13316/A | | - | e | | | DVGW hole O-ring |
| 30255 | 560018 | | - | e | | | Nozzle |
| 30260 | 560017 | | - | e | | | Plug |
| 30265 | 11600033 | | - | e | | | Ring |
| 30270 | 11600007 | | 4025334 | e | | | Support |
| 30270 | 11600035 | 4025335 | - | e | | | Lower wash arm support |
| 30275 | 11600021 | | - | e | | | Shaft, lower |
| 30280 | 13015 | | - | e | | | O-ring |
| 30285 | 500621 | | - | e | | | Distributor lower |
| 30290 | 10657 | | - | e | | | Right rinse arm - stainless steel nozzle |
| 30295 | 10658 | | - | e | | | Left rinse arm - stainless steel nozzle |
| 30300 | 76081 | 4025782 | - | e | | | Pipe-pass O-ring 51x34x14 |

i=INSULATED HOOD, e=ELECTRONICAL CONTROL

H63E=H63E

bt=BREAK TANK, bp=BOOSTER PUMP, dvgw=DVGW, ws=WATER SOFTNER, dd=DETERGENT DISPENSER, dp=DRAIN PUMP

A=3/N/PE~380-400V 50-60Hz, D=3/PE~200-210V 50-60Hz, F=2/PE~220-240V 50-60Hz, G=3/N/PE~415V 50-60Hz, H=3/PE~220-230V 50-60Hz, K=3/PE~380-400V 50-60Hz, L=3/PE~415V 50-60Hz, M=3/PE~440V 60Hz, P=1/N/PE~220-230V 50-60Hz, R=2/PE~220-240V 50-60Hz, U=1/N/PE~240V 50-60Hz, V=3/PE~240V 50-60Hz, W=1/N/PE~100-110V 50-60Hz



17_125be

Spare parts

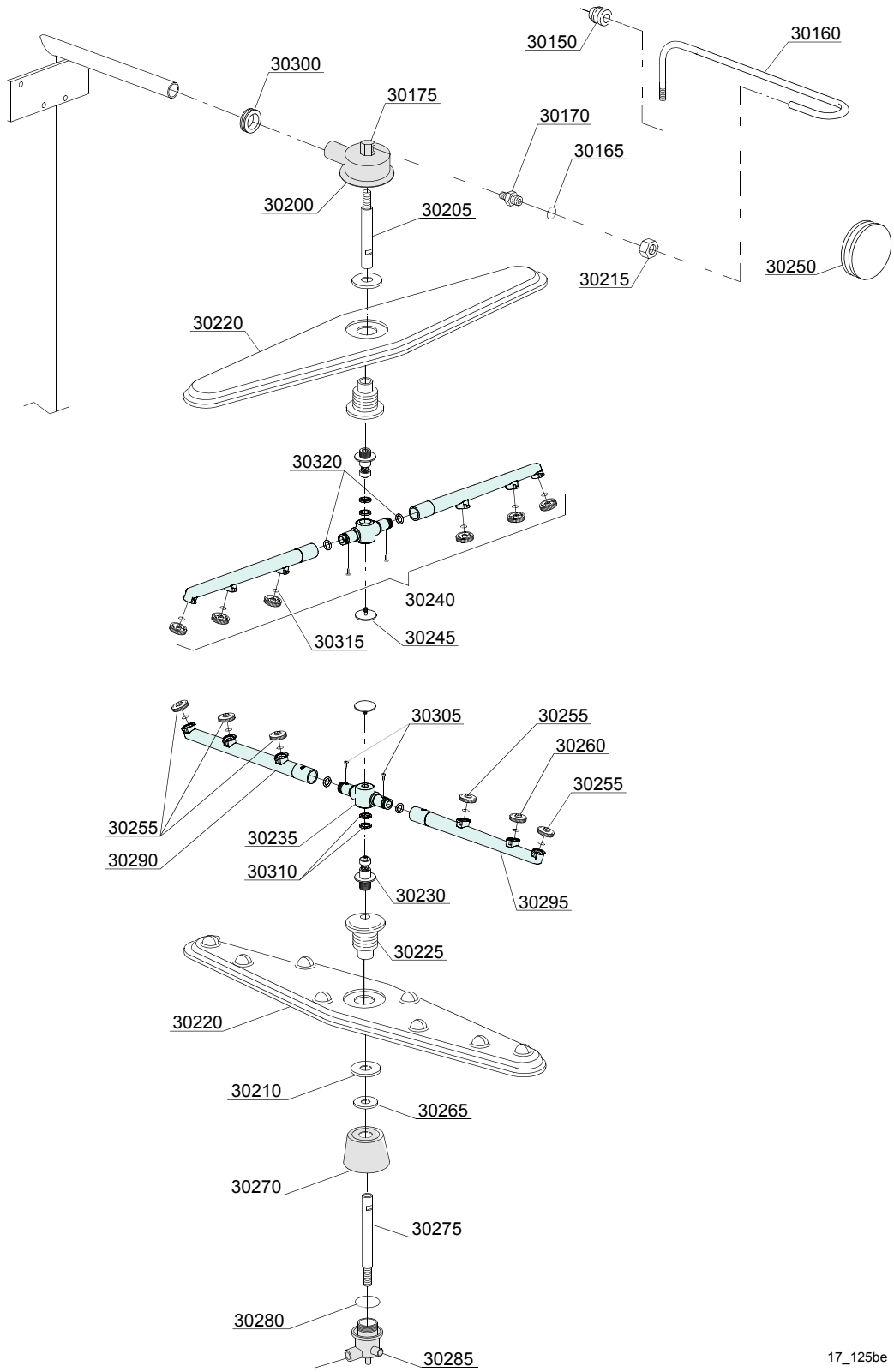
| ID | P-code | SN from | SN to | Mod. | Acces. | Volt | Description |
|---|----------|---------|-------|------|--------|------|---|
| Module:Turret group with rotating arms | | | | | | | |
| 30150 | 13304 | | - | e | | | Pipe |
| 30160 | 76082 | | - | e | | | Pipe gasket |
| 30165 | 13003 | | - | e | | | OR 112 NBR O-ring |
| 30170 | 12006 | | - | e | | | Coupling |
| 30175 | 75319 | | - | e | | | Elbow coupling |
| 30200 | 78001 | | - | e | | | Distributor upper |
| 30205 | 75322 | | - | e | | | Shaft, upper |
| 30210 | 75317 | | - | e | | | Nut |
| 30215 | 12006/A | | - | e | | | Ø10 pipe fitting 3/8x3,5 nut 19 hexagonal |
| 30220 | 10600900 | | - | e | | | Wash arm |
| 30225 | 75320 | | - | e | | | Holder |
| 30230 | 10651 | | - | e | | | Rinse axle |
| 30235 | 75920/A | | - | e | | | Rinse arm |
| 30240 | 75920 | | - | e | | | Rinse arm complete |
| 30245 | 10652 | | - | e | | | Rinse arm screw |
| 30255 | 10371 | | - | e | | | Open rinse nozzle |
| 30260 | 10372 | | - | e | | | Closed rinse nozzle |
| 30265 | 11600033 | | - | e | | | Ring |
| 30270 | 11600035 | | - | e | | | Lower wash arm support |
| 30275 | 11600021 | | - | e | | | Shaft, lower |
| 30280 | 13015 | | - | e | | | O-ring |
| 30285 | 500621 | | - | e | | | Distributor lower |
| 30290 | 75920/D | | - | e | | | Right rinse arm |
| 30295 | 75920/S | | - | e | | | Left rinse arm |
| 30300 | 76081 | | - | e | | | Pipe-pass O-ring 51x34x14 |
| 30305 | 11004 | | - | e | | | 4x10 TCB Ø8 spax toothed screw |
| 30310 | 75920/B | | - | e | | | O ring for hub (rinse arm) |
| 30315 | 13002 | | - | e | | | OR R6 NBR O-ring (minimum 10 pieces) |

i=INSULATED HOOD, e=ELECTRONICAL CONTROL

H63E=H63E

bt=BREAK TANK, bp=BOOSTER PUMP, dvgw=DVGW, ws=WATER SOFTNER, dd=DETERGENT DISPENSER, dp=DRAIN PUMP

A=3/N/PE~380-400V 50-60Hz, D=3/PE~200-210V 50-60Hz, F=2/PE~220-240V 50-60Hz, G=3/N/PE~415V 50-60Hz, H=3/PE~220-230V 50-60Hz, K=3/PE~380-400V 50-60Hz, L=3/PE~415V 50-60Hz, M=3/PE~440V 60Hz, P=1/N/PE~220-230V 50-60Hz, R=2/PE~220-240V 50-60Hz, U=1/N/PE~240V 50-60Hz, V=3/PE~240V 50-60Hz, W=1/N/PE~100-110V 50-60Hz



17_125be

Spare parts

| ID | P-code | SN from | SN to | Mod. | Acces. | Volt | Description |
|---|--------|---------|-------|------|--------|------|--------------------------------------|
| Module:Turret group with rotating arms | | | | | | | |
| 30320 | 13002 | | - | e | | | OR R6 NBR O-ring (minimum 10 pieces) |

i=INSULATED HOOD, e=ELECTRONICAL CONTROL

H63E=H63E

bt=BREAK TANK, bp=BOOSTER PUMP, dvgw=DVGW, ws=WATER SOFTNER, dd=DETERGENT DISPENSER, dp=DRAIN PUMP

A=3/N/PE~380-400V 50-60Hz, D=3/PE~200-210V 50-60Hz, F=2/PE~220-240V 50-60Hz, G=3/N/PE~415V 50-60Hz, H=3/PE~220-230V 50-60Hz, K=3/PE~380-400V 50-60Hz, L=3/PE~415V 50-60Hz, M=3/PE~440V 60Hz, P=1/N/PE~220-230V 50-60Hz, R=2/PE~220-240V 50-60Hz, U=1/N/PE~240V 50-60Hz, V=3/PE~240V 50-60Hz, W=1/N/PE~100-110V 50-60Hz