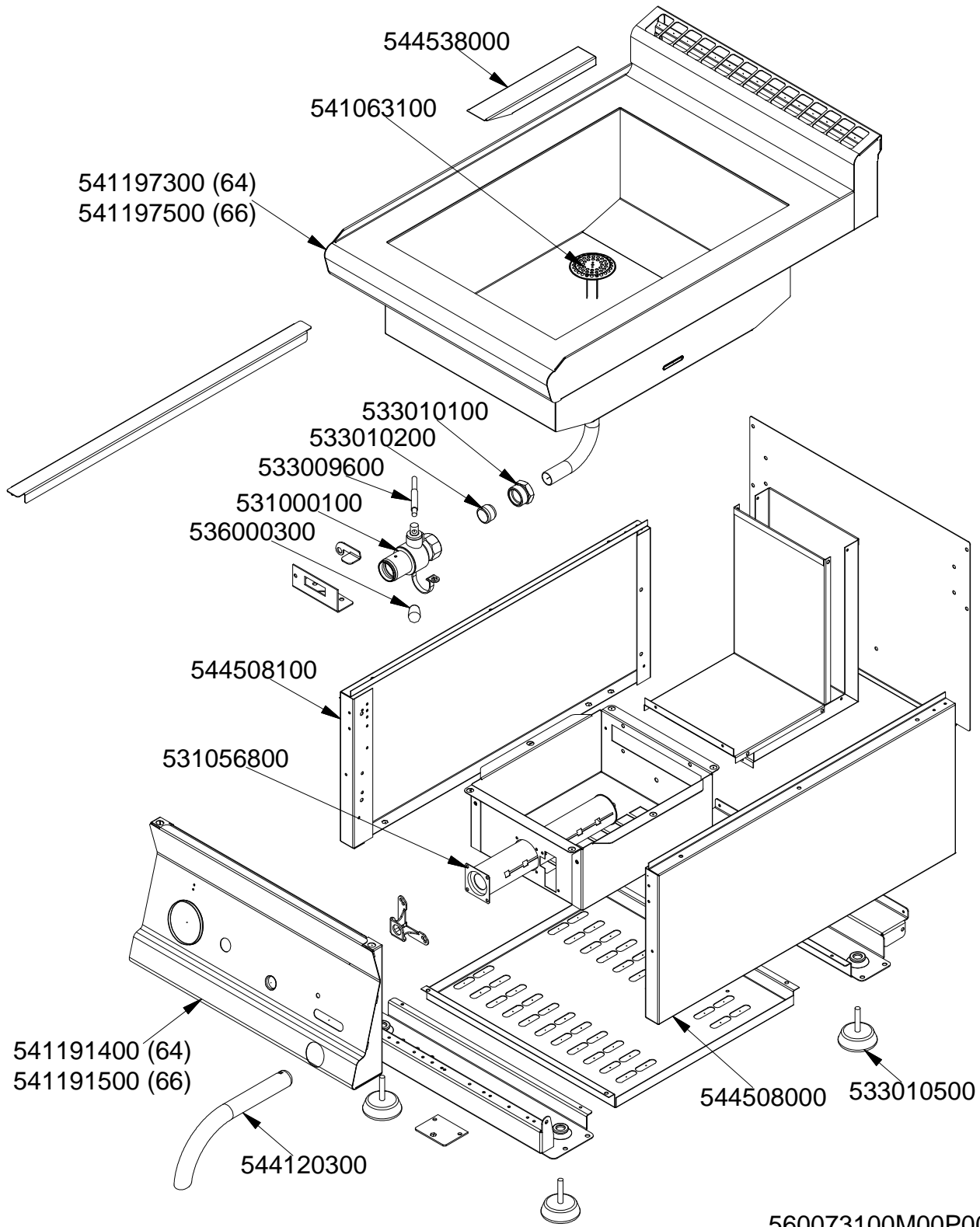


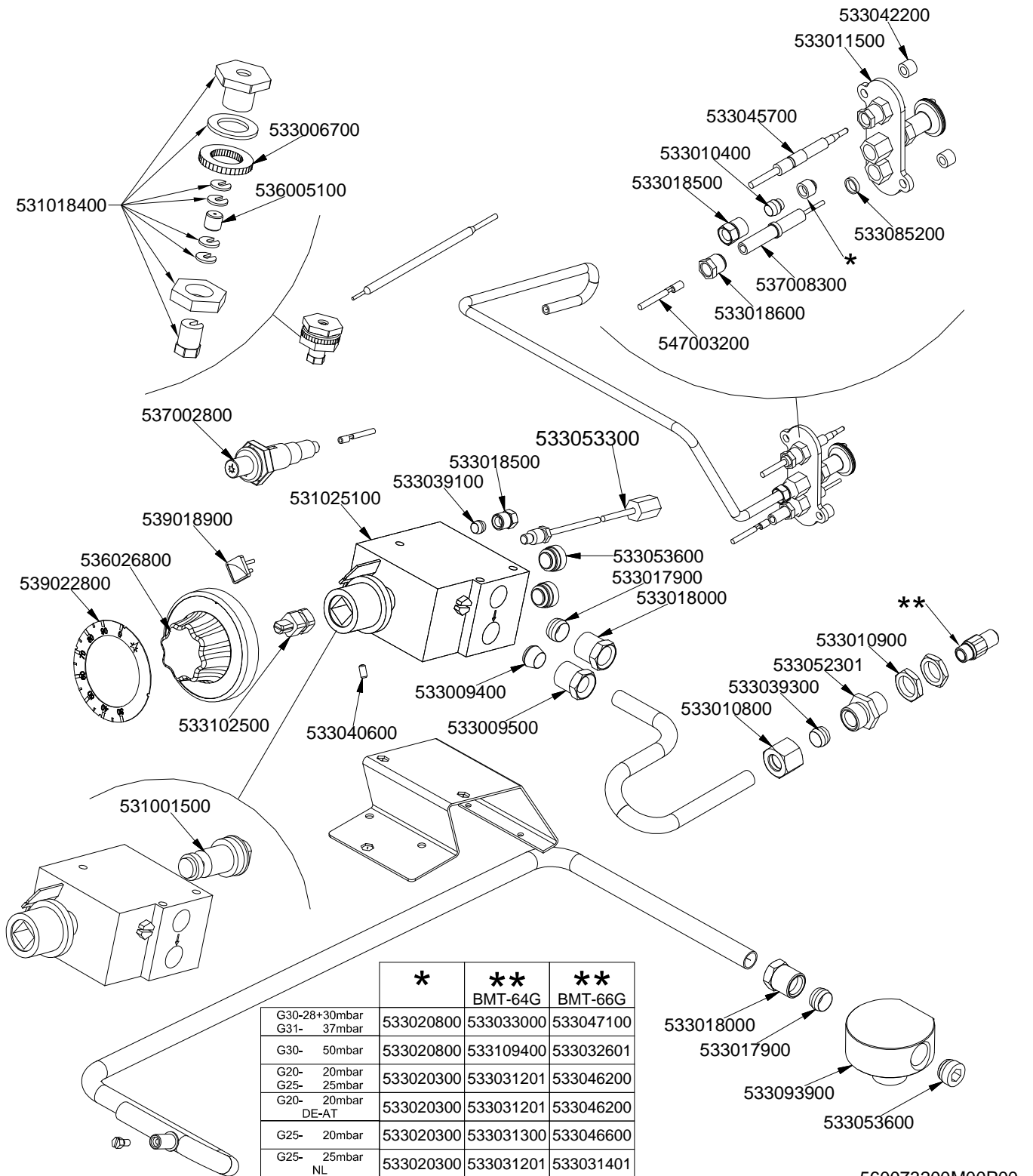
BMT-64G BMT-66G



MAGICLOTUS 60

CUCINE / RANGES / HERDE / CUISINIÈRES

BMT-64G BMT-66G



	*	**	**
		BMT-64G	BMT-66G
G30-28+30mbar G31- 37mbar	533020800	533033000	533047100
G30- 50mbar	533020800	533109400	533032601
G20- 20mbar G25- 25mbar	533020300	533031201	533046200
G20- 20mbar DE-AT	533020300	533031201	533046200
G25- 20mbar	533020300	533031300	533046600
G25- 25mbar NL	533020300	533031201	533031401

560073200M00P00

Page	Pos	Code	Description
001		544538000	PROBE PROTECTION FOR BM 60T
001		541063100	TANK DRAIN FILTER BS-4EM/CPM
001		541197500	UPPER PLATE BMT-66G
001		533010100	3/4 D. 18 PIPE UNION
001		533010200	BICONE 18S
001		533009600	DRAIN COCK HANDLE
001		531000100	DRAIN COCK 3/4"
001		536000300	FIXED GRIP D.15*25*M6
001		544508100	
001		531056800	BURNER TUB.04,5 KW BMT 60T
001		541191500	CONTROL PANEL 607090 BMT-66G
001		533010500	LEG M10*25 D.40
001		544508000	
001		544120300	DRAIN PIPE 22 FOR COCK 3/4"G
002		533042200	
002		533011500	PILOT BURNER 2 FLAMES 220
002		533018500	FITTING FOR BICONE D.6 M10*1
002		533045700	THERMOCOUPLE M9*1 500
002		533006700	NOTCHED WASHER D.14
002		533010400	BICONE D.6
002		536005100	GRAPHITE §07,4 GASKET
002		531018400	
002		533085200	
002		533053600	EUROSIT VALVE PLUG
002		537008300	ROUND PLUG §2,4- LONG ELECTRODE
002		533018600	PLUG FITTING
002		547003200	HIGH-VOLTAGE CABLE TUBE.§2 L=500
002		533017900	BICONE D.12
002		537002800	PIEZOELECTRIC IGNITION M18
002		533053300	THERMOCOUPLE EXTENSION M9*1
002		533039100	BICONE §6
002		531025100	EUROSIT VALVE BM 30-100°C
002		539018900	INDEX FOR KNOB
002		533009400	BICONE 10S
002		536026800	BLACK KNOB §70 8 P.Ø08X6,5 FR.Ø3
002		539022800	ADHESIVE GRADUATED DISC FOR KNOB
002		533018000	ELBOW FOR BICONE D.12 3/8 RS L20
002		533010900	NUT M14*1 H.4
002		533052301	JOINT FOR NOZZLE HOLDER
002		533039300	BICONE §10
002		533010800	TUBE NUT D.10 M16*1,5
002		533009500	NIPPLE FOR BICONE 10S
002		533093900	FITTING GAS ENTRY 1/2G 2OUT 3/8G
002		533040600	HEADLESS SCREW M4*8
002		533102500	
002		531001500	MAGNET FOR EUROSIT VALVE
002		533020800	NOZZLE 0160-FLUSS. (25)
002		533047100	NOZZLE §100A CH12*30 GF-BM6/8
002		533032601	NOZZLE §85 CH12X30,0
002		533020300	NOZZLE 0160 (NATURAL GAS) 1-2 (41)
002		533046200	NOZZLE §150 CH12X30 L-BR TP

Page	Pos	Code	Description
002		533046600	NOZZLE §161 G25
002		533031401	NOZZLE §155 CH12X30 G20 MH-B2/FT