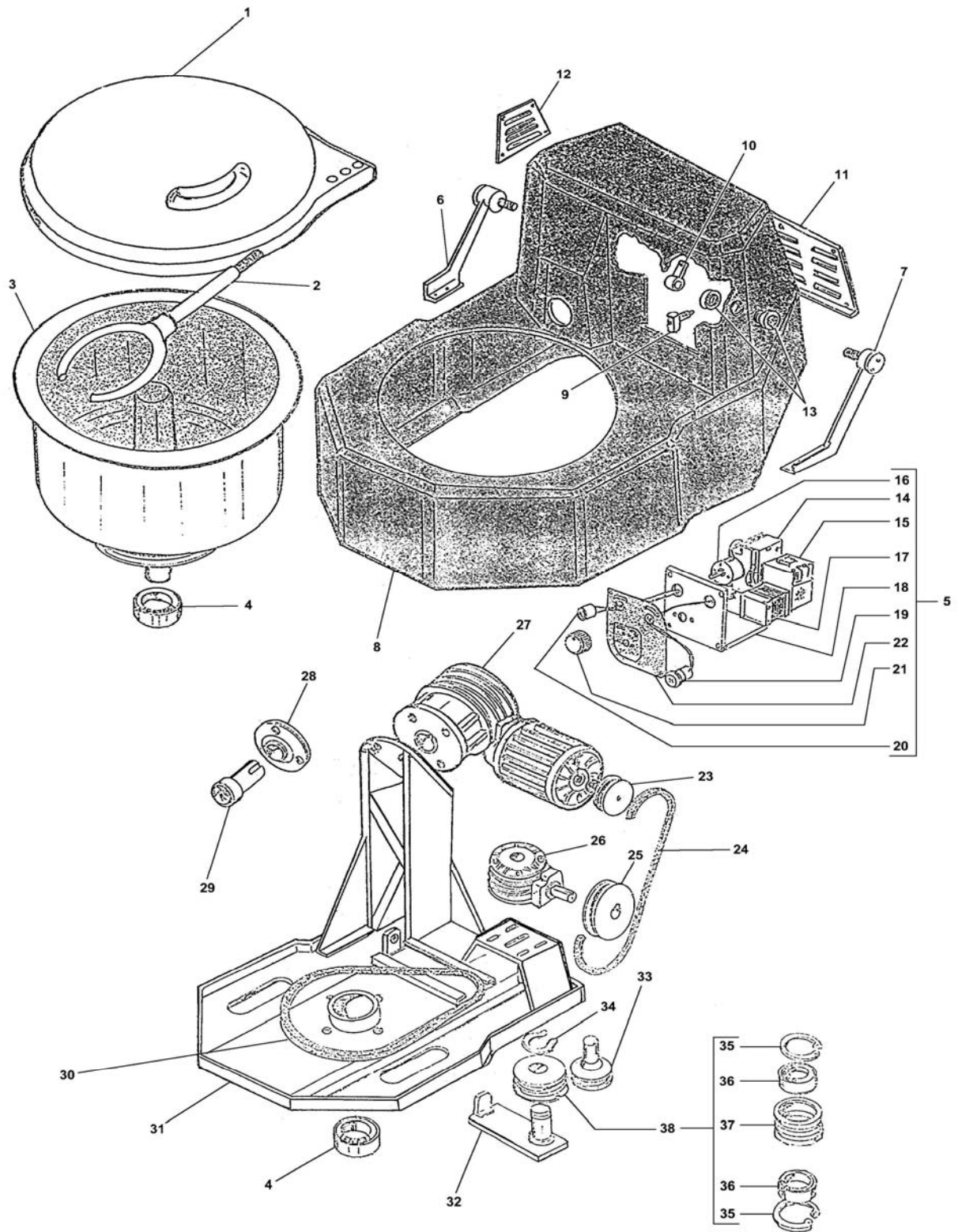


Impastatrice a forcella mod.FF30
Fork kneader mod.FF30



IMPASTATRICE A FORCELLA MOD.FF30 FORK KNEADER MOD.FF30

| Rif No | Codice Code | | Caratteristiche Characteristics | Descrizione Description | |
|--------|-------------|---|---------------------------------|---|--|
| 1 | CO1600 | ☺ | | Coperchio Cover | |
| 2 | CO1602 | | | Forcella Fork | |
| 3 | CO1603 | | | Pentola Pan | |
| 4 | CO1604 | | 6206 2RS | Cuscinetto Bearing | |
| 5 | CO1657 | | 400V/3Ph/50Hz | Impianto elettrico Electric installation | |
| 6 | CO1606 | | | Staffa Bracket | |
| 7 | CO1607 | | | Staffa Bracket | |
| 8 | CO1608 | | | Carcassa Housing | |
| 9 | CO1611 | ☺ | | Microinterruttore Microswitch | |
| 10 | CO1612 | | | Boccola Bush | |
| 11 | CO1613 | | | Copertura Covering | |
| 12 | CO1615 | | | Copertura Covering | |
| 13 | CO1616 | | | Boccola Bush | |
| 14 | CO1617 | ☺ | | Relay Relay | |
| 15 | CO1618 | ☺ | | Teleruttore Remote control switch | |
| 16 | CO1619 | ☺ | | Timer Timer | |
| 17 | CO1620 | ☺ | | Trasformatore Transformer | |
| 18 | CO1621 | | | Pannello Panel | |
| 19 | CO1622 | ☺ | | Pulsante Push button | |
| 20 | CO1623 | ☺ | | Pulsante Push button | |
| 21 | CO1624 | ☺ | | Pomello Knob | |
| 22 | CO1626 | | | Etichetta Label | |
| 23 | CO1627 | | | Puleggia Pulley | |
| 24 | CO1628 | ☺ | | Cinghia Belt | |
| 25 | CO1631 | | | Puleggia Pulley | |
| 26 | CO1633 | | | Riduttore Gear box | |
| 27 | CO1637 | | 400V/3Ph/50Hz | Motoriduttore Geared motor | |
| 28 | CO1639 | | | Supporto Support | |
| 29 | CO1641 | | | Albero Shaft | |
| 30 | CO1644 | ☺ | | Cinghia Belt | |
| 31 | CO1645 | | | Telaio Frame | |
| 32 | CO1648 | | | Staffa Bracket | |
| 33 | CO1649 | | | Puleggia Pulley | |
| 34 | SL1616 | | ø25 | Seeger Seeger | |
| 35 | SL0119 | | ø52 | Seeger Seeger | |
| 36 | SL0118 | | 6205 ZZ | Cuscinetto Bearing | |
| 37 | CO1654 | | | Puleggia Pulley | |
| 38 | CO1656 | | Assembly | Puleggia Pulley | |

(*): fuori produzione / out of production

☺ : ricambio consigliato / spare part suggested