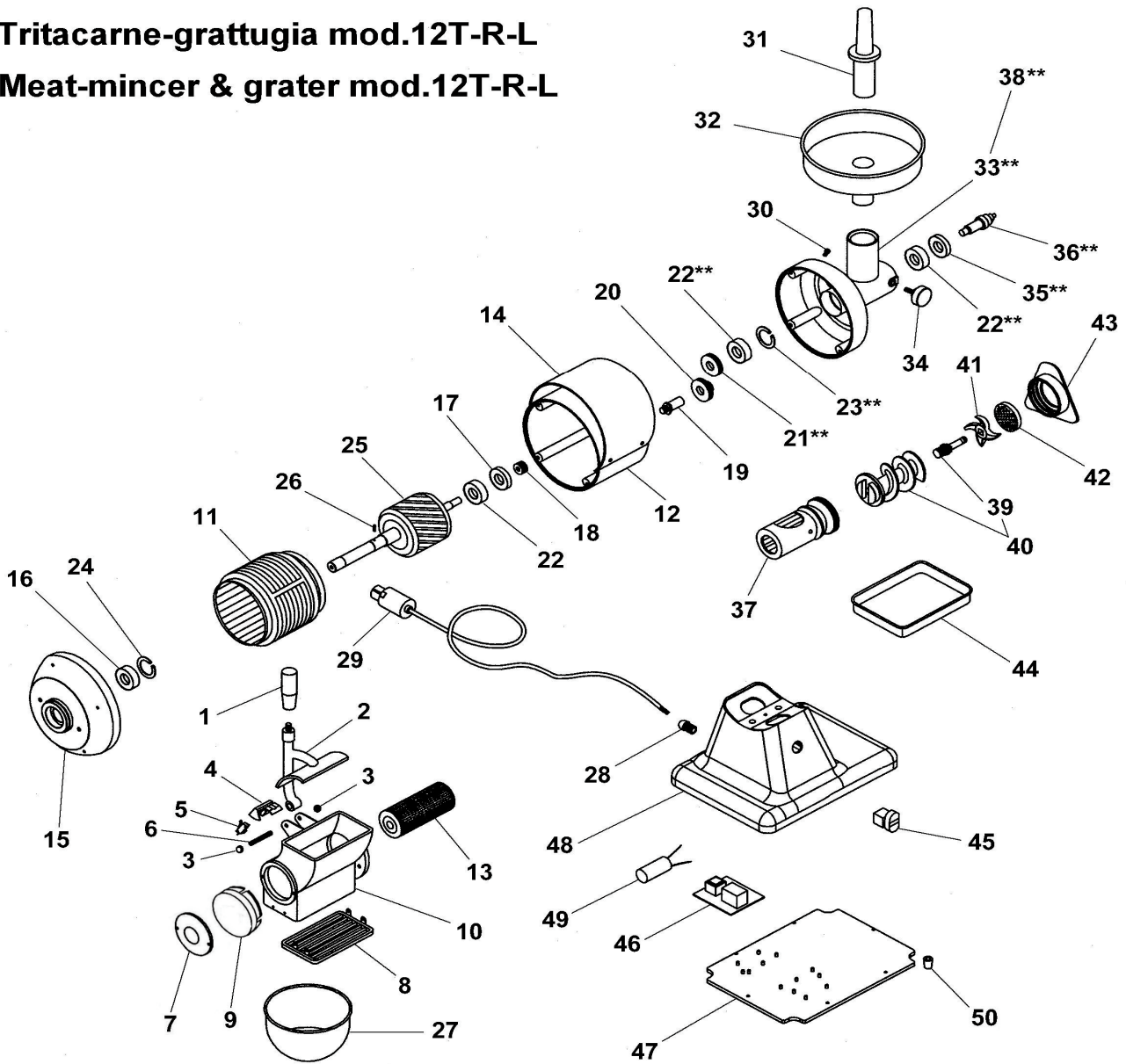


Tritacarne-grattugia mod.12T-R-L
Meat-mincer & grater mod.12T-R-L



****:** Assemblato / Assembly

TRITACARNE-GRATTUGIA MOD.12T-R-L MEAT-MINCE & GRATER MOD.12T-R-L

Rif No	Codice Code	Caratteristiche Characteristics	Descrizione Description	
1	SL0106		Impugnatura	Grip
2	SL0201		Pressore	Lever press
2	SL0107	01/09/99 f.p.(*)	Pressore	Lever press
3	SL0108	M8	Dado	Nut
4	SL0882		Supporto	Support
5	SL0885		Microinterruttore	Microswitch
6	SL0258	M8x60	Prigioniero	Stud
7	SL2833		Coperchio	Cover
8	SL1452		Griglia	Grid
9	SL2573		Tappo	Tap
10	SL0203		Bocca	Casing
10	SL0112	01/09/99 f.p.(*)	Bocca	Casing
11	SL0183	400V/3Ph/50Hz	Statore	Stator
11	SL0122	230V/1Ph/50Hz	Statore	Stator
12	SL0146		Carcassa	Housing
12	SL0123	01/04/00 f.p.(*)	Carcassa	Housing
13	SA5200		Rullo	Roller
14	SL0181		Copertura	Covering
15	SL0117		Calotta	Calotte
16	SL0118	6205 ZZ	Cuscinetto	Bearing
17	SL0127	17x40x7	Paraolio	Oil seal
18	SL0128		Ingranaggio	Gear
19	SL0124		Albero	Shaft
20	SL0125		Ingranaggio	Gear
21	SL0130		Ingranaggio	Gear
22	SL0131	6203 2RS	Cuscinetto	Bearing
23	SL0132	ø40	Seeger	Seeger
24	SL0119	ø52	Seeger	Seeger
25	SA6700	400V/3Ph/50Hz	Rotore	Rotor
25	SA6600	230V/1Ph/50Hz	Rotore	Rotor
26	SL0121	ø5x10	Spina	Pin
27	SL0174	(R-T)	Recipiente	Container
27	SL0175	(L)	Recipiente	Container
28	SL1668	PG11	Pressacavo	Cable clamp
29	SL1841	3Ph+Gnd	Cavo elettrico	Electric cable
29	SL1671	1Ph+N+Gnd	Cavo elettrico	Electric cable
30	SL0133		Tappo	Tap
31	SL0134		Pestello	Pusher
32	SL0135	(R-L)	Tramoggia	Hopper
32	SL0136	(T)	Tramoggia	Hopper
33	SL0137		Bocchettone	Sleeve
34	SL0138		Pomello	Knob
35	SL0139	25x40x7	Paraolio	Oil seal
36	SL0140		Albero	Shaft
37	SL0142		Bocchettone	Sleeve
38	SA3700	Assembly	Bocchettone	Sleeve
39	SL2521		Perno	Pivot
39	SL0822	10/06/02 f.p.(*)	Perno	Pivot
40	SA5300		Elica	Screw shaft
40	SA5100	01/01/00 f.p.(*)	Elica	Screw shaft
41	//////////		Coltello	Cutter
42	//////////		Piastra	Plate
43	SL0171		Volantino	Handwheel
44	SL0180	(R-T)	Recipiente	Container
45	SL0891		Pulsante	Push button
46	SL0883		Scheda elettronica	Electronic card
47	SL0268	(R-T)	Fondo	Bottom
47	SL0226	(L)	Fondo	Bottom
48	SL0178	(R-T)	Base	Base
48	SL0179	(L)	Base	Base
49	SL0177	16µF	Condensatore	Condenser
50	SL0235		Piedino	Foot

(*): fuori produzione / out of production