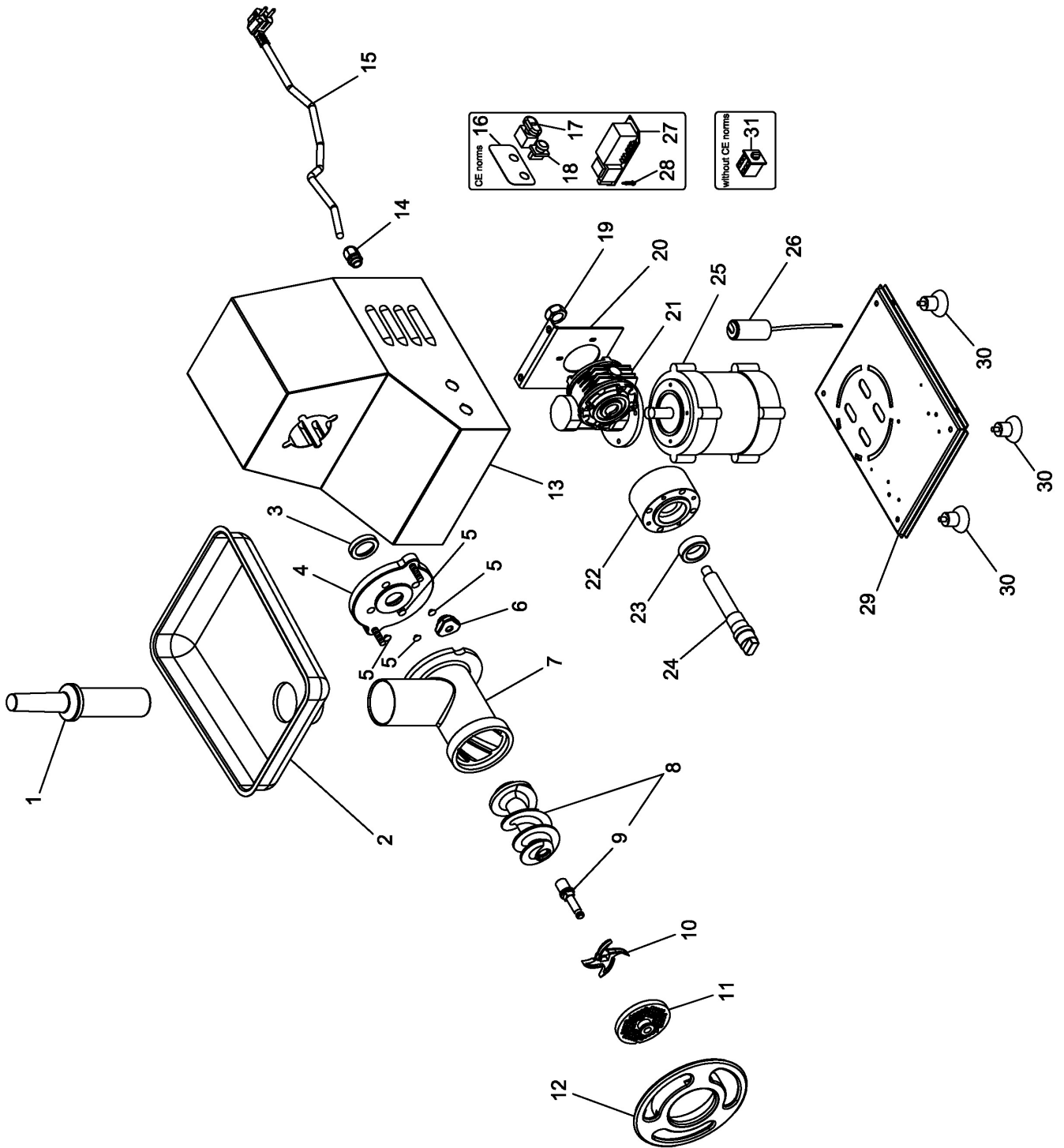


# TR22TSQ1



## TR22TSQ1

Pos. Ref.	Codice Code	Caratteristiche Features	Descrizione Description	
1	SL0134	●	Pestello	Pusher
2	SL0135		Tramoggia	Hopper
3	SL0232	∅30x∅52x11	Paraolio	Oil seal
4	SL3451		Flangia	Flange
5	SL2547		Tappo	Tap
6	SL2924	●	Pomello	Knob
7	SL3986	Stainless-steel	Bocchettone	Sleeve
7	SL2523R0	Food stuff treated cast-iron (without CE norms)	Bocchettone	Sleeve
7	SL3987	Unger	Bocchettone	Sleeve
8	SA5500	● Stainless-steel	Elica	Screw shaft
8	SA5400	Food stuff treated cast-iron (without CE norms)	Elica	Screw shaft
8	SA5700	Unger	Elica	Screw shaft
9	SL0823		Perno	Pivot
9	SL0824	Unger	Perno	Pivot
10	///////	●	Coltello	Cutter
11	///////	●	Piastra	Plate
12	SL0197	Stainless-steel	Volantino	Handwheel
12	SL3328R0	Aluminium (without CE norms)	Volantino	Handwheel
13	SL3471		Carcassa	Housing
14	SL1668	PG11	Pressacavo	Cable clamp
15	SL1671	3Ph+Gnd	Cavo elettrico	Electric cable
15	SL1841	1Ph+N+Gnd	Cavo elettrico	Electric cable
16	SL3577		Etichetta	Label
17	SA1083	● Start-reverse	Pulsante	Push button
18	SL0807	● Stop	Pulsante	Push button
19	SL2493	M16x1,5	Dado	Nut
20	SL3452		Staffa	Bracket
21	SL3476		Riduttore	Gear box
22	SL3450		Flangia	Flange
23	SL2590	51206	Cuscinetto	Bearing
24	SL3456		Albero	Shaft
25	SA1008	400V/3Ph/50Hz	Motore	Motor
25	SA1009	230V/1Ph/50Hz	Motore	Motor
26	SL2311	25µF	Condensatore	Condenser
27	SL0999	●	Scheda elettronica	Electronic card
28	SL3020		Distanziale	Spacer
29	SL3453		Fondo	Bottom
30	SL1610		Piedino	Foot
31	SL0247		Invertitore	Reversing gear

(\*) : fuori produzione / out of production

● : ricambio consigliato / spare part suggested