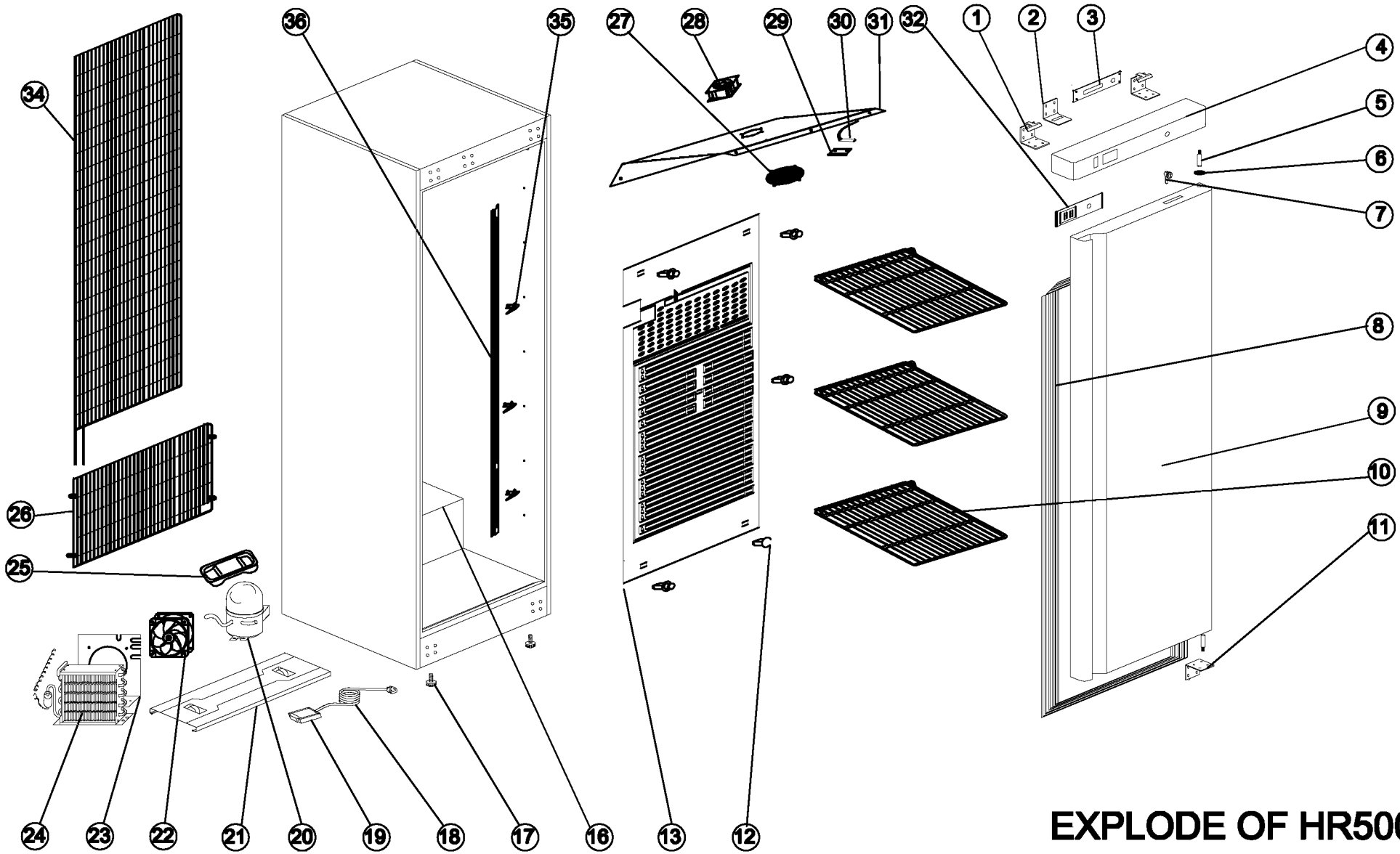


Kühlung
Kühlschränke, Tiefkühlschränke

Artikel-Nr. 621029 (ER500) , 621031 (ER500SS), 621032 (ER500P),
621033 (ER500PSS), 622026 (EF500), 622027 (EF500SS)

Explosionszeichnung / Ersatzteile

Bitte bei Ersatzteilbestellung immer Artikelnummer und Seriennummer
mit angeben!



EXPLODE OF HR500

SPARE PARTS LIST OF HR500

| NO | CODE | NAME | MODEL | QTY | MATERIAL |
|----|-------------|-----------------------|----------|-------|----------|
| 01 | HF600.01 | UP HINGE | | 2PCS | |
| 02 | HF600.02 | HOOK OF LOCK | | 1PC | |
| 03 | HR600.09 | THERMOSTAT SUPPORT | | 1PC | |
| 04 | HF600.04 | FRONT PANEL | | 1PC | WHITE |
| 05 | HF600.19 | HINGE AXIS | Φ7 | 2PCS | |
| 06 | GN2100TN.07 | BUSHING | | 1PC | |
| 07 | GN650TN.86 | LOCK | | 1PC | |
| 08 | HR500.01 | GASKET | | 1PC | |
| 09 | HR500.02 | DOOR | | 1PC | |
| 10 | HR500.03 | SHELF | | 3PCS | |
| 11 | HF600.08 | DOWN HINGE | | 1PC | |
| 12 | HR600.06 | EVAPORATOR FIXER | | 5PCS | |
| 13 | HR600.04 | EVAPORATOR | 100*580 | 1PC | |
| 16 | HR500.04 | BODY | | 1PC | |
| 17 | S900.13 | FEET | | 2PCS | |
| 18 | S900.47 | PLUG | | 1PC | |
| 19 | GN650TN.16 | JUNCTION BOX | | 1PC | |
| 20 | S900.41 | COMPRESSOR | OF1350A | 1PC | |
| 21 | HR500.05 | UNITE BOARD | | 1PC | |
| 22 | S900.34 | CONDENSER FAN | SA1238A2 | 1PC | |
| 23 | HR600.10 | CONDENSER FAN SUPPORT | | 1PC | |
| 24 | BD312.06 | CONDENSER | | 1PC | |
| 25 | S900.40 | WATER PAN | | 1PC | |
| 26 | HR500.08 | UNITE ROOM GRILLS | | 1PC | |
| 27 | G350.14 | BASKET GUARD GRILLS | | 1PC | |
| 28 | S900.34 | CIRCUIT FAN | SA1238A2 | 1PC | |
| 29 | S900.31 | SENSOR FIXED CLIP | | 1PC | |
| 30 | S900.32 | SENSOR | | 1PC | |
| 31 | HR600.01 | FAN SUPPORT | | 1PC | |
| 32 | HR600.07 | THERMOSTAT | | 1PC | |
| 34 | HF500.09 | CONDENSER | | 1PC | |
| 35 | G350.08 | SHELF CLIP | | 12PCS | |
| 36 | HR500.06 | SUPPORT | | 4PCS | |