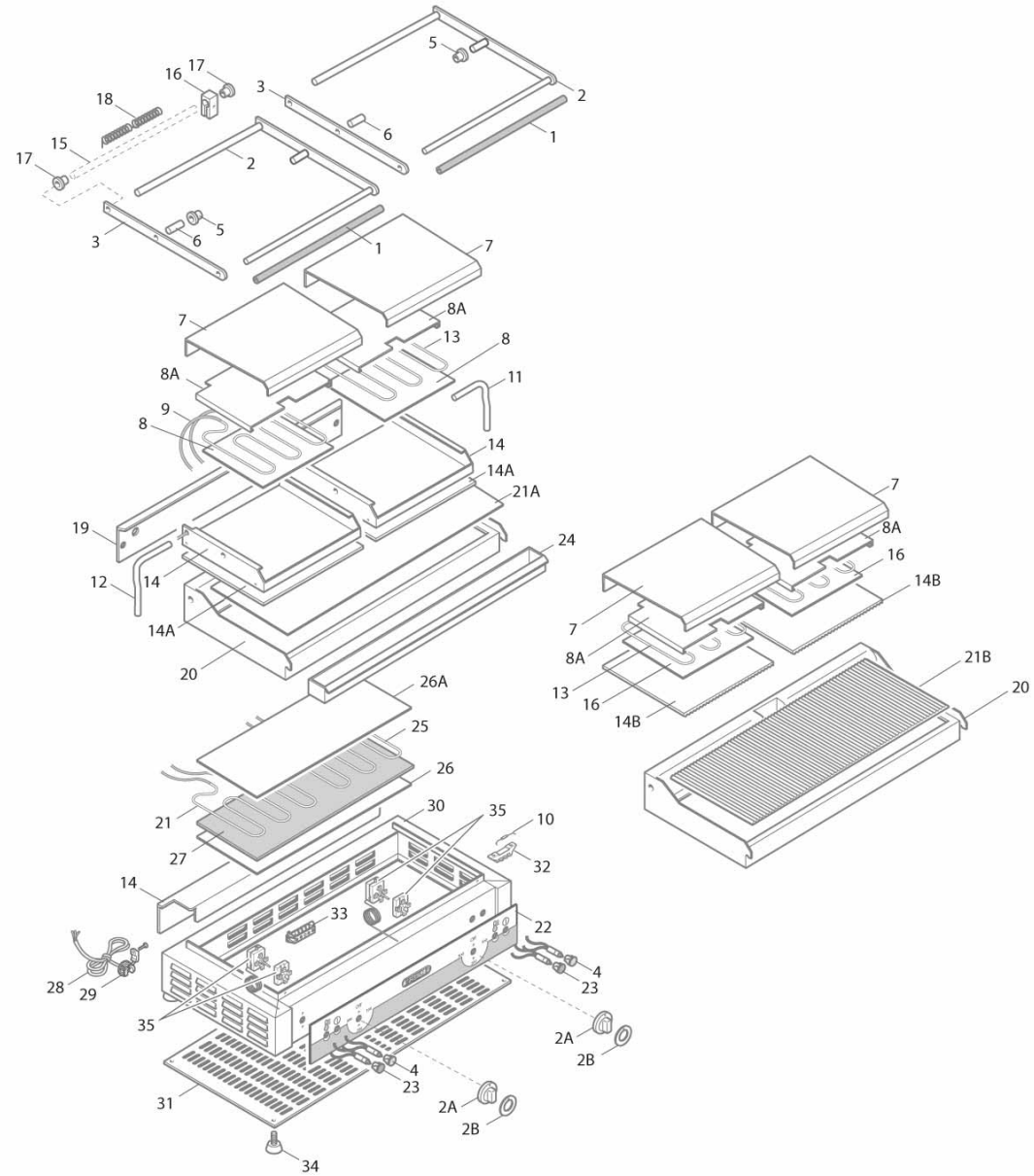




PDR/VTR





Pos. Item	Codice Code	Descrizione	Item Description	Designation articles	Artikelbeschreibung	Decripción artículos	N° pezzi - No. pieces					
											PDR/VTR	
1	30875500	Manico moplen rosso pd	Red moplen pin pd	Ma. moplen rouge pd	Roter moplen griff pd	Asa moplen roja pd						2
2	30876600	Ass. maniglia pd	Handle assembly pd	Poignee complete pd	Kompletter griff pd	Conjunto asa pd						2
3	30875700	Manico laterale ps/pm/pd zn	La. handle ps/pm/pd zn	Ma. latÉral ps/pm/pd zn	Seit. griff ps/pm/pd zn	Asa la. ps/pm/pd zn						2
4	30168800	Spia verde 230v d.10mm150Ø	Green lamp 230v	Temoin lumineux vert 230v	Grune kontrollampe 230v	Piloto verde 230v						2
5	30779900	Boccola zincata x piastre st/sx/vtr	Galvanised bushing	Douville galvanisÉe	Verzinkte buchse	Boquilla cincada						4
6	30907800	Perno centrale pd (zincato)	Central pin pd	Pivot central pd	(verzinkt) ze. bolzen pd	Perno central pd						2
7	30804600	Coperchio ps/pd st/vtr	Lid ps/pd st.	Cou. ps/pd st/vtr	De. ps/pd st/vtr	Tapa ps/pd st.						2
8	30868800	Lastra protez. ferro piccola	Single protective sheet	Plaque de protection simple	Einzelne schutzplatte	Placa de proteccion individual						2
8A	30809700	Ass.premiresist. cop. pd/vtr	Heating element presser	Cou. presse-rÉsistance	Deckelwider.	Tapa prensa-resistencia						2
9	30193400	Tu. vetrotex d.5 l.250 mm	Glass tube	Tube verre	Isolierend kleines rohr fuer	Tubo vidrio						10
10	30978100	Termofusibile 152°c - 15a	Thermofuse 152°c - 15a	Thermofusible 152°c - 15a	Thermoschmelzdraht 152°c - 15a	Termofusibile 152°c - 15a						2
11	30809800	Curvetta passafili sx pd	Lh angle conduit	Co. de protection cÂbles g.che	L. geb. stÜck drahtfÜhrung	Codo para cables izquierdo						1
12	30810100	Curvetta passafili dx ps/pm/pd	Rh angle conduit	Co. de protection cÂbles droite	R.gebogenes stÜck draht.	Codo para cables derecho						1
13	30022500	Res.compl.700w-230v ps/pd	Resistance complete 700w-230v	Resistance complete 700w-230v	Obere heiz. 700w 230 v	Resistencia completa 700w-230v						2
14	30809500	Cornice coperchio pd/vtr	Cover frame pd.	Cadre du cou. pd/vtr	Decke. pd/vtr	Marco tapa pd.						2
14A	30911800	Vetro super. pd/vtr 204x236	Top glass pd/vtr 204x236	Verre supÉrieure pd/vtr 204x236	Oberes glas pd/vtr 204x236	Cristal superior pd/vtr 204x236						1
14B	30911900	Vetro sup. pdr/vtr 204x236	Top glass pd. 204x236	Verre supÉ. pdr/vtr 204x236	Ob. glas pdr/vtr 204x236	Cr. superior pdr/vtr 204x236						1
15A	35876200	Manopola rossa p. 6x4.6 a o°	Red knob 6x4.6 o° c	Manette rouge 6x4.6 o° c	Drehknopf 6x4.6 o° c	Mando rojo 6x4.6 o° c						2
15A	35877200	Man. rossa p. 6x4.6 a o° ral3000	Red knob p. 6x4.6 a o° ral3000	Ma. rouge p. 6x4.6 a o° ral3000	Drehknopf p. 6x4.6 a o° ral3000	Mando rojo p. 6x4.6 a o° ral3000						2
15B	31953500	Serig.rossa manop.frytop/forno	Knob serigraphy	Serigraphie manette	Drehknopferigraphie	Serigrafia mando						2
16	30779100	Blocco frizione ps/pm/pd st-vtr	Clutch blockage ps/pm/pd st-vtr	Blocage friction ps/pm/pd st-vtr	Blockung fuer kupplung	Bloqueo friccion						2
17	30780200	Bo. zn con cava ps/pm/pd sx/st/vtr	Bushing with cavity	Douille creuse	Buchse mit nut	Boquilla ranurada						4
18	30613100	Molla pd/vtr	Spring pd/vtr	Ressort pd/vtr	Feder pd/vtr	Muelle pd/vtr						2
19	30790200	Carter pd/st-vtr	Rear ca. pd/st-vtr	Ca. arriÉre pd/st-vtr	Hin. gehÄuse pd/st-vtr	Ca. posterior pd/st-vtr						1
20	30911000	Ass. piastra inferiore pd/vtr	Lower plate pd/vtr	Pl. infÉrieure pd/vtr	Untere platte pd/vtr	Placa inferior pd/vtr						1
21B	30912300	Vetro infer. pdr/vtr 235x549	Lower glass pd. 235x549	Verre infÉ. pdr/vtr 235x549	Un. glas pdr/vtr 235x549	Cr. inferior pdr/vtr 235x549						1
21A	30912200	Vetro inf. pd/vtr 235x549	Lower glass pd. 235x549	Verre infÉ. pd/vtr 235x549	Un. glas pd/vtr 235x549	Cr. inferior pd/vtr 235x549						-
22	30899900	Pan. piastra doppia bertos	Berto's adhesive panel	Panneau adhÉsif berto's	Haftendes paneel berto's	Panel adhesivo berto's						1
23	30168500	Spia arancio 230v d.10mm150Ø	Orange lamp 230v	Temoin lumineux orange 230v	Orange kontrollampe 230v	Piloto naranja 230v						2
24	30791900	Ass.cassetto racco. pd	Drip tray pd	Bac recueille-sauces pd	Sauceauffangschale pd	Caja para recoger jugo pd						1
25	30022500	Res.compl.700w-230v ps/pd	Resistance complete 700w-230v	Resistance complete 700w-230v	Obere heiz. 700w 230 v	Resistencia completa 700w-230v						2
26	30868600	Lastra protez. ferro grande	Large protective sheet	Plaque de protection grande	Grosse schutzplatte	Placa de proteccion grande						1
26A	30868000	Last.copr.resist/vetro pd/vtr	Lower he. element cover sheet	Pl. cache-rÉsistance infÉrieure	Un. widerstandsdeckelplatte	Placa cubre-resistencia inferior						1
27	30921900	Qua. isomart 320x170x4 pm...pd/vtr	Isomart panel 320x170x4	Ta. isomart 320x170x4	Tafel isomart 320x170x4	Panel isomart 320x170x4						1
28	30192600	Cavo 5x2.5 pd/lid-st-sx-vtr	Power su. cable 5 x 2,5mm	Cable d'alim. 5 x 2,5mm	Versorg. 5 x 2,5mm	Cable de alime. 5x2,5 mm.						1
29	30185400	Passacavo pa 277 i.m.q.	Cable guide	Passe-cÂble	KabelfÜhrung	Aislador pasapanel						1
30	30863700	Ass.involucro base pd/lid-vtr-st-sx	Base enc. pd/lid-vtr-st-sx	Couv. base pd/lid-vtr-st-sx	HÜlle basis pd/lid-vtr-st-sx	Env. base pd/lid-vtr-st-sx						1
31	30837500	Fondo per pd/lid-st-sx-vtr	Bo. pd/lid-st-sx-vtr	Fond pd/lid-st-sx-vtr	Bodendpdr/lid-st-sx-vtr	Fondo pd/lid-st-sx-vtr			fondo pd/lid-st-sx-vtr			1
32	30184800	Morsettiera laterale fv 77/3	Lateral terminal board fv 77/3	Bornier latÉral fv 77/3	Sei. klemmenleiste fv 77/3	Bornera lateral fv 77/3						2
33	30184200	Morsettiera a 6 poli fv 122 b (lau 10)	Terminal board 6 poles	Bornier 6 poles	Klemmenleiste	Bornera 6 polos						1

