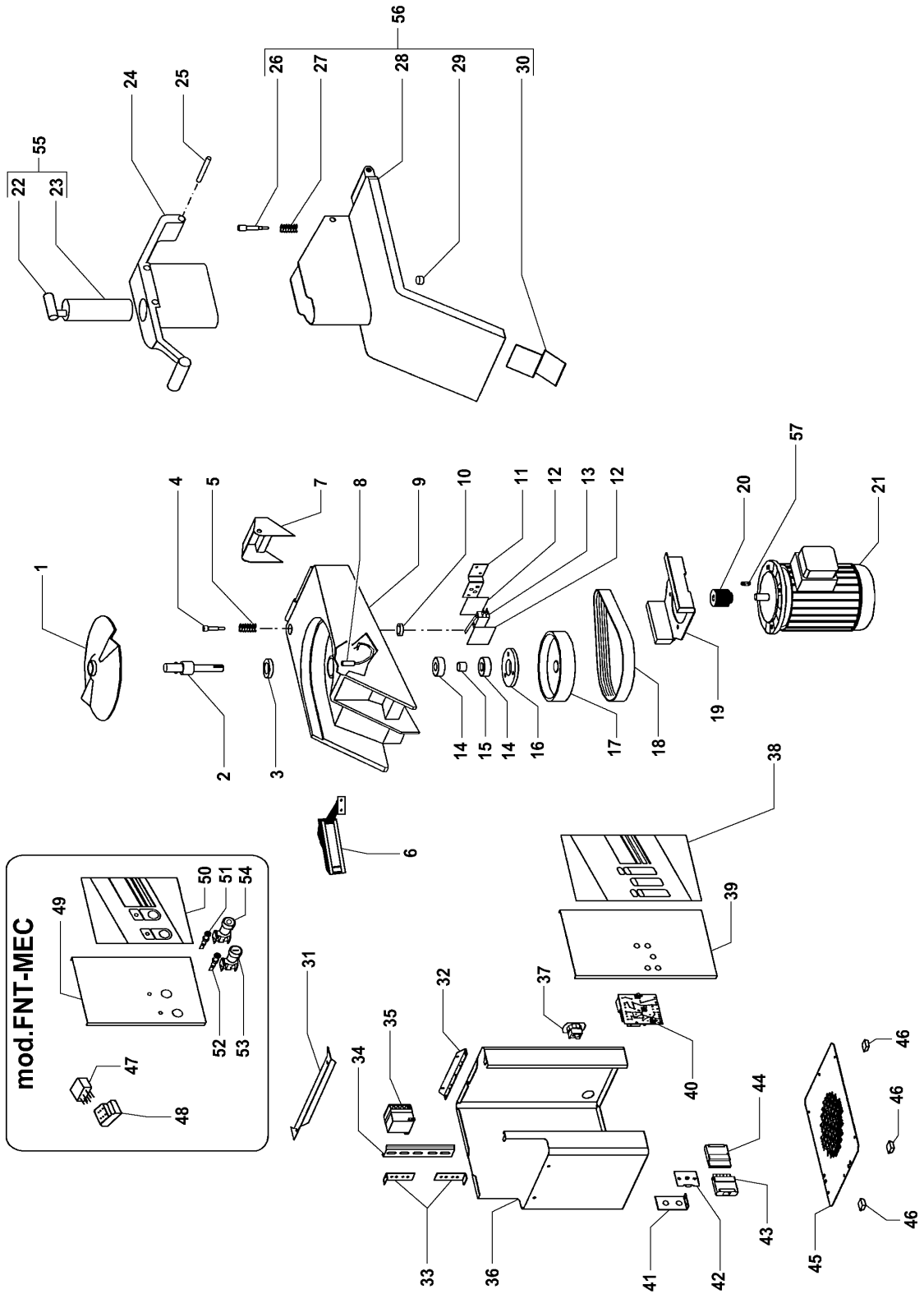


Tagliaverdure mod.FNT
Vegetable-cutter mod.FNT



TAGLIAVERDURE MOD.FNT VEGETABLE-CUTTER MOD.FNT

RIF.	CODICE / CODE	DIN - UNI	DESCRIZIONE / DESCRIPTION
1	36G6960		Disco / Disk
2	36G6970		Albero / Shaft
3	3151280	28x40x7	Paraolio / Oil seal
4	3190920		Perno / Pivot
5	36G7060		Molla / Spring
6	SL1528		Maniglia / Handle
7	35Q8340	01/01/00 f.p.(*)	Protezione / Protection
8	32W3240		Microinterruttore / Microswitch
9	3600930		Camera / Casing
10	3151690	5x9x2	Parapolvere / Dust cover
11	35V4030		Profilo / Structural shape
12	37R0050		Membrana / Whaser
13	32W2640		Microinterruttore / Microswitch
14	36F0090	6302 2RS	Cuscinetto / Bearing
15	35V3000		Distanziale / Spacer
16	3600940		Ghiera / Washer
17	36G6600		Puleggia / Pulley
18	36G6610		Cinghia / Belt
19	35V2970		Supporto / Support
20	36G0030		Puleggia / Pulley
21	SL1471	230-400V/3Ph/50Hz	Motore trifase mod.FNT / Triple-phase motor mod.FNT
21	32M0330	01/01/01 f.p.(*)	Motore trifase mod.FNT/FNT-MEC / Triple-phase motor mod.FNT/FNT-MEC
21	SL1470	230V/1Ph/50Hz	Motore monofase mod.FNT / Single-phase motor mod.FNT
21	32M0340	01/01/01 f.p.(*)	Motore monofase mod.FNT / Single-phase motor mod.FNT
21	32M4460	230V/1Ph/50Hz	Motore monofase mod.FNT-MEC / Single-phase motor mod.FNT-MEC
21	32M0080	400V/3Ph/50Hz	Motore 2 velocità mod.FNT2V / 2 speed motor mod.FNT2V
22	36M5330		Maniglia / Handle
23	36M5320		Pestello / Pusher
24	6000760		Gruppo pressore / Pusher (assembly)
25	3190900	15/07/01 f.p.(*)	Perno / Pivot
25	SL2410		Perno / Pivot
26	36D2621		Perno / Pivot
27	36G6980		Molla / Spring
28	SA3500		Gruppo Coperchio / Cover (assembly)
29	3600160		Magnete / Magnet
30	35Q9391		Chiusura / Bracket
31	35V5590		Profilo / Structural shape
32	35V2920		Profilo / Structural shape
33	35V2930		Piastra / Plate
34	32D0630	01/01/01 f.p.(*)	Profilato mod.FNT/FNT-MEC / Structural shape mod.FNT/FNT-MEC
34	32D0400		Profilato mod.FNT-FNT2V / Structural shape mod.FNT-FNT2V
35	32Z4840	230V/50-60Hz 3kW	Teleruttore / Remote control switch
36	35W4460		Involucro mod.FNT-FNT2V / Housing mod.FNT-FNT2V
36	35W4520	01/01/01 f.p.(*)	Involucro mod.FNT/FNT-MEC / Housing mod.FNT/FNT-MEC
37	32D0360		Fissacavo / Cable clamp
38	SL1501		Pannello adesivo mod.FNT / Adhesive panel mod.FNT
38	SL1502		Pannello adesivo mod.FNT2V / Adhesive panel mod.FNT2V
39	35V4090	01/01/01 f.p.(*)	Cruscotto mod.FNT / Dashboard mod.FNT
39	35Q9530		Cruscotto mod.FNT / Dashboard mod.FNT
39	35V4100		Cruscotto mod.FNT2V / Dashboard mod.FNT2V
40	32Z6990		Scheda elettronica mod.FNT / Electronic card mod.FNT
40	32Z7000		Scheda elettronica 2 velocità / 2 speed electronic card
41	35V8180		Profilo / Structural shape
42	32D1050		Piastra / Plate
43	32D1010	1Ph+N+Gnd - M	Connettore monofase / Single-phase connector
43	32D1030	3Ph+N+Gnd - M	Connettore trifase / Triple-phase connector
44	32D1020	1Ph+N+Gnd - F	Connettore monofase / Single-phase connector
44	32D1040	3Ph+N+Gnd - F	Connettore trifase / Triple-phase connector
45	35M8260		Fondo mod.FNT/FNT-MEC / Bottom mod.FNT/FNT-MEC
45	35D8050		Fondo mod.FNT2V / Bottom mod.FNT2V
46	3178340		Piedino / Foot
47	SL1509		Relay mod.FNT-MEC / Relay mod.FNT-MEC
48	SL1510		Zoccolo relay mod.FNT-MEC / Base relay mod.FNT-MEC
49	35V7870		Cruscotto mod.FNT-MEC / Dashboard mod.FNT-MEC
50	SL1508		Pannello adesivo mod.FNT-MEC / Adhesive panel mod.FNT-MEC
51	32W3280	230V 2W	Lampada bianca mod.FNT-MEC / White bulb mod.FNT-MEC
52	32W2970	230V 2W	Lampada verde mod.FNT-MEC / Green bulb mod.FNT-MEC
53	SL0807		Pulsante stop mod.FNT-MEC / Stop push button mod.FNT-MEC
54	SL1049		Pulsante start mod.FNT-MEC / Start push button mod.FNT-MEC
55	6000770		Gruppo pestello / Pusher (assembly)
56	6000690		Gruppo Coperchio / Cover (assembly)
57	SL0010	5x5x20	Linguetta / Key

(*): fuori produzione / out of production