

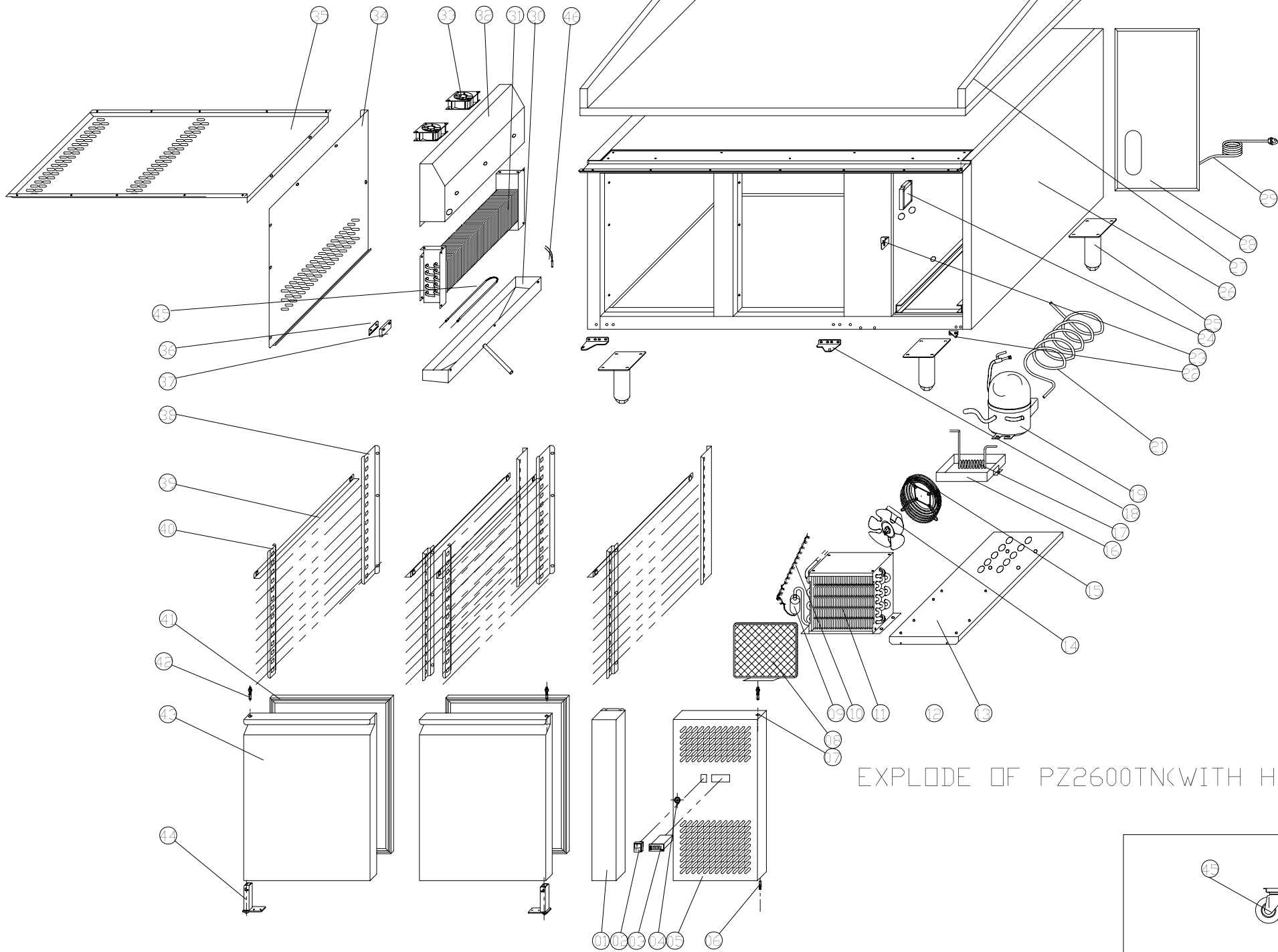


**Kühlung
Pizzakühltische, Kühltische**

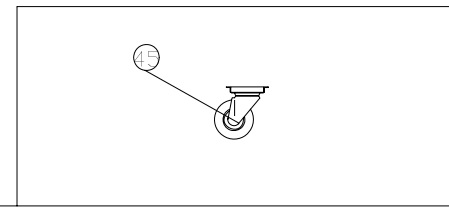
Artikel-Nr. 611013 (PZ2600TN38)

Explosionszeichnung / Ersatzteile

Bitte bei Ersatzteilbestellung immer Seriennummer mit angeben!



EXPLODE OF PZ2600TN(WITH H.E.)



SPARE PARTS LIST OF PZ2600TN WITH H.E.

N0.	CODE	NAME	MODEL	QUY.	MATERIAL	REMARK	PRICE
01	GN2100TN.01	FIXED FRONT PANEL		1PC	STAINLESS		
02	S900.01	MAIN SWITCH					
03	GN650BT.16	THERMOSTAT(WITH 2 PROBES)	EKTRON REK33/XR60C	1PC			
04	GN650TN.86	LOCK		1PC			
05	GN2100TN.02	FRONT PANEL		1PC	STAINLESS		
06	GN2100TN.03	HINGE AXIS	Φ7	4PCS	STAINLESS		
07	GN2100TN.07	BUSHING	Φ5	4PCS	STAINLESS		
08	GN2100TN.35	FILTER		1PC			
09	S900.44	FILTER DRIER	20g	1PC	XH-9		
10	S900.43	CAPPILARY	Φ1.15x3000	1PC	COPPER		
11	GN2100TN.08	CONDENSER	1/4HP	1PC			
12	S900.13	HANDLE		1PC			
13	GN2100TN.09	UNIT BOARD		1PC	ZINC		
14	S900.37	CODENSER FAN	BD01-01/Φ200	1PC			
15	S900.38	BASKETC GUARD GRILLS		1PC	COATED STEEL		
16	GN2100TN.10	WATER BOX		1PC	STAINLESS		
17	GN2100TN.11	EVAPORATE PIPE	Φ6	1PC	COPPER		
18	GN2100TN.12	DOOR HINGE LEFT/RIGHT		1PAIR	STAINLESS		
19	S900.41	COMPRESSOR	OF1350A	1PC			
21	GN2100TN.13	SUCTION PIPI	Φ8	1PC	COPPER		
22	GN2100TN.14	FRONT PANEL HINGE		1PC	STAINLESS		
23	GN2100TN.15	LOCK HOOK		1 PC	STAINLESS		
24	GN650TN.16	JUNCTION BOX		1PC			
25	GN650TN.07	FEET	H=150	4PCS	STAINLESS		

N0.	CODE	NAME	MODEL	QUY.	MATERIAL	REMARK	PRICE
26	PA2100TN.1	BODY		1PC			
27	PZ2600TN.01	TOP		1PC	MARBLE		
28	GN2100TN.18	UNIT ROOM COVER		1PC	ZINC		
29	S900.47	PLUG		1PC			
30	GN2100TN.20	EVAPORATOR WATER PAN		1PC	STAINLESS		
31	GN2100TN.21	EVAPORATOR		1PC			
32	GN2100TN.22	FAN SUPPORT		1PC			
33	GN2100TN.23	CIRCUIT FAN		2PCS			
34	PA2100TN.3	EVAPORATOR COVER		1PC	STAINLESS		
35	PA2100TN.4	AIR FLOW CONDUCT BOARD		1PC	STAINLESS		
36	S900.31	SENSOR FIXED CLIP		1PC	STAINLESS		
37	GN650TN.17	PROBE PADDING		1PC			
38	PA2100TN.5	BACK SUPPORT LEFT/RIGHT		2PAIRS	STAINLESS		
39	PA2100TN.6	GUIDE LEFT/RIGHT		47PAIRS	STAINLESS		
40	PA2100TN.7	FRONT SUPPORT LEFT/RIGHT		2PAIRS	STAINLESS		
41	PA2100TN.9	GASKET		2PCS	PLASTIC		
43	PA2100TN.10	DOOR		2PCS			
44	GN650TN.14	DOOR SPRING HINGE		2PCS			
45	GN2100BT.10	DEFROST HEATING ELEMENT		1PC			
46	GN650BT.04	PROTECTOR FOR HEATING ELEMENT	10A/65°C	1PC			