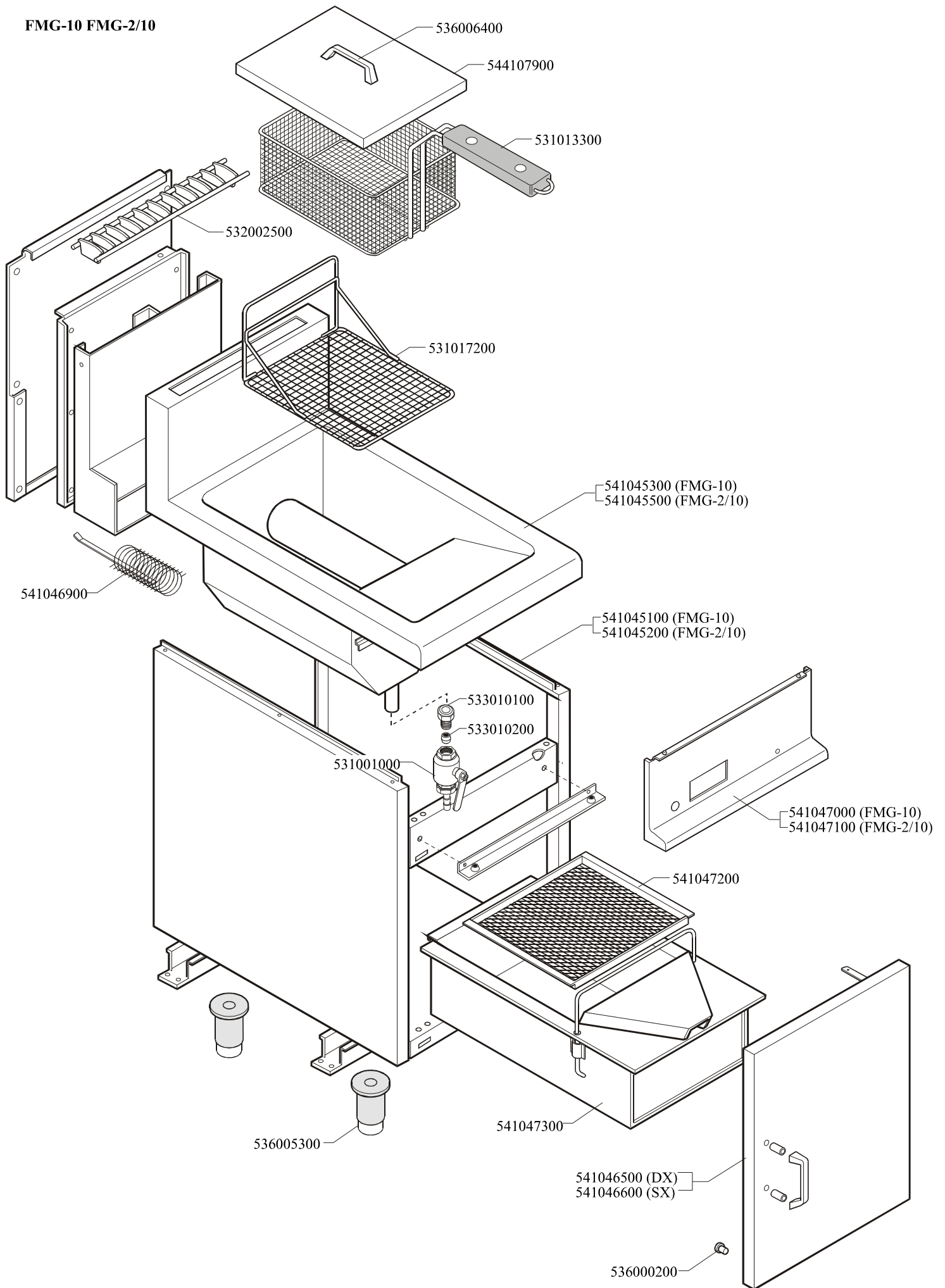
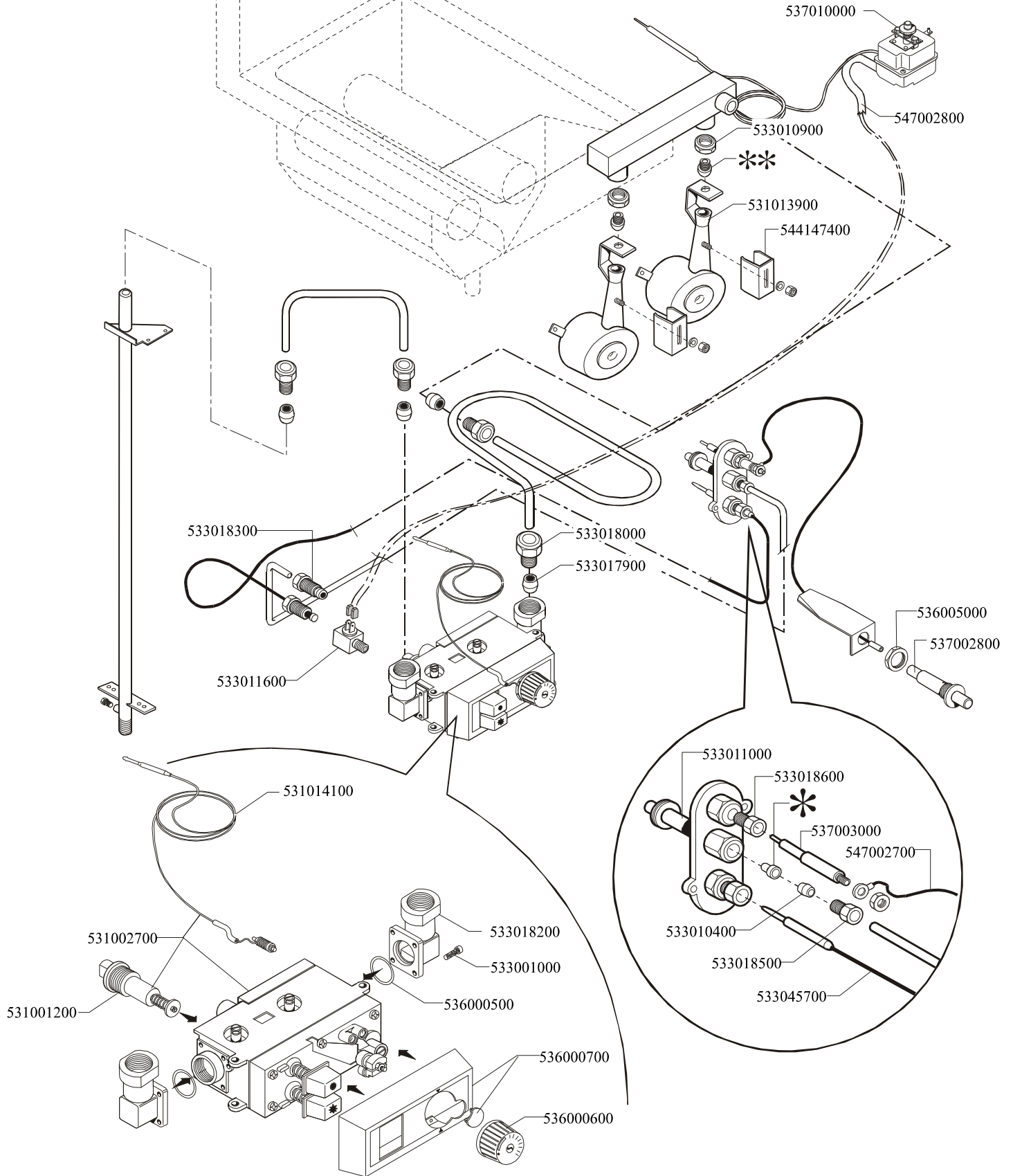


FMG-10 FMG-2/10



	*	**
G30-28+30mbar G31- 37mbar	533020200	533043200
G30- 50mbar	533020200	533030100
G20- 20mbar G25- 25mbar	533020400	533030200
G25- 20mbar	533020400	533043100
G25- 25mbar NL	533020400	533030200



Page	Pos	Code	Description
001		536006400	BLACK HANDLE 65/FE/FG
001		544107900	TANK LID FMG-10-2/10
001		531013300	FRYER BASKET 10LTS.GAS/70EL.
001		532002500	GRID FOR PIPE 400 FMG
001		531017200	TANK FILTER/BASKET SUPPORT FMG10/13
001		541046900	HEAT ACCUMULATOR FMG-10-2/10
001		541045500	UPPER PLATE FMG-2/10
001		541045200	FRAME FMG-2/10-2/15
001		533010100	3/4 D. 18 PIPE UNION
001		533010200	BICONE 18S
001		531001000	DRAIN COCK 3/4" + HANDLE
001		541047100	CONTROL PANEL FMG-2/10-2/15
001		541047200	FILTER FOR DRIP TRAY
001		541047300	DRIP TRAY FMG
001		541046500	RIGHT DOOR 40
001		541046600	LEFT DOOR 40
001		536000200	D.12 H.4 BUMPER
001		536005300	PLASTIC LED 2"
002		537010000	SAFETY THERMOSTAT 220°C SINGLEPHASE
002		533010900	NUT M14*1 H.4
002		531013900	BURNER FMG-10/15
002		544147400	AIR ADJUSTMENT BUSHING FMG-FQ
002		533018300	FITTING WITH BICONE 6 M10*1
002		533018000	ELBOW FOR BICONE D.12 3/8 RS L20
002		533017900	BICONE D.12
002		536005000	NUT M18 FOR PIEZOELECTRIC IGNITION
002		537002800	PIEZOELECTRIC IGNITION M18
002		533011000	PILOT BURNER 3 FLAMES 320
002		533018600	PLUG FITTING
002		537003000	PLUG M4 - LONG ELECTRODE
002		547002700	HIGH-VOLTAGE CABLE L=500
002		533010400	BICONE D.6
002		533018500	FITTING FOR BICONE D.6 M10*1
002		533067200	THERMOCOUPLE 220+500 M9*1 CUT-OFF
002		531014100	VALVE CAPILLARY PROBE FOR FG §6
002		531002700	MINISIT VALVE 100-190°C FQ/FG
002		531001200	MAGNET AC/2-MINISIT
002		533018200	ELBOW OR GJ 3/8
002		533001000	SCREW TCB C/CC M4X16
002		536000500	O-RING FOR MINISIT FITTING
002		536000700	PLASTIC COVER FOR MINISIT + SCREW
002		536000600	BLACK LHD KNOB OP. FOR MINISIT
002		547002800	SAFETY CABLE FOR GAS FRYER
002		533011600	THERMOCOUPLE CUT-OFF M9*1-F9*1
002		533020200	PILOT JETS 0160 FOR LPG §30
002		533043200	NOZZLE §110 G30 (LPG) CH12X14
002		533030100	NOZZLE §95 CH12*14 G-FP
002		533020400	NOZZLE 0160 (NATURAL GAS) 51
002		533030200	NOZZLE §170 CH12*14 MH-FG L-FP/CW
002		533043100	NOZZLE §185 G25 CH12X14