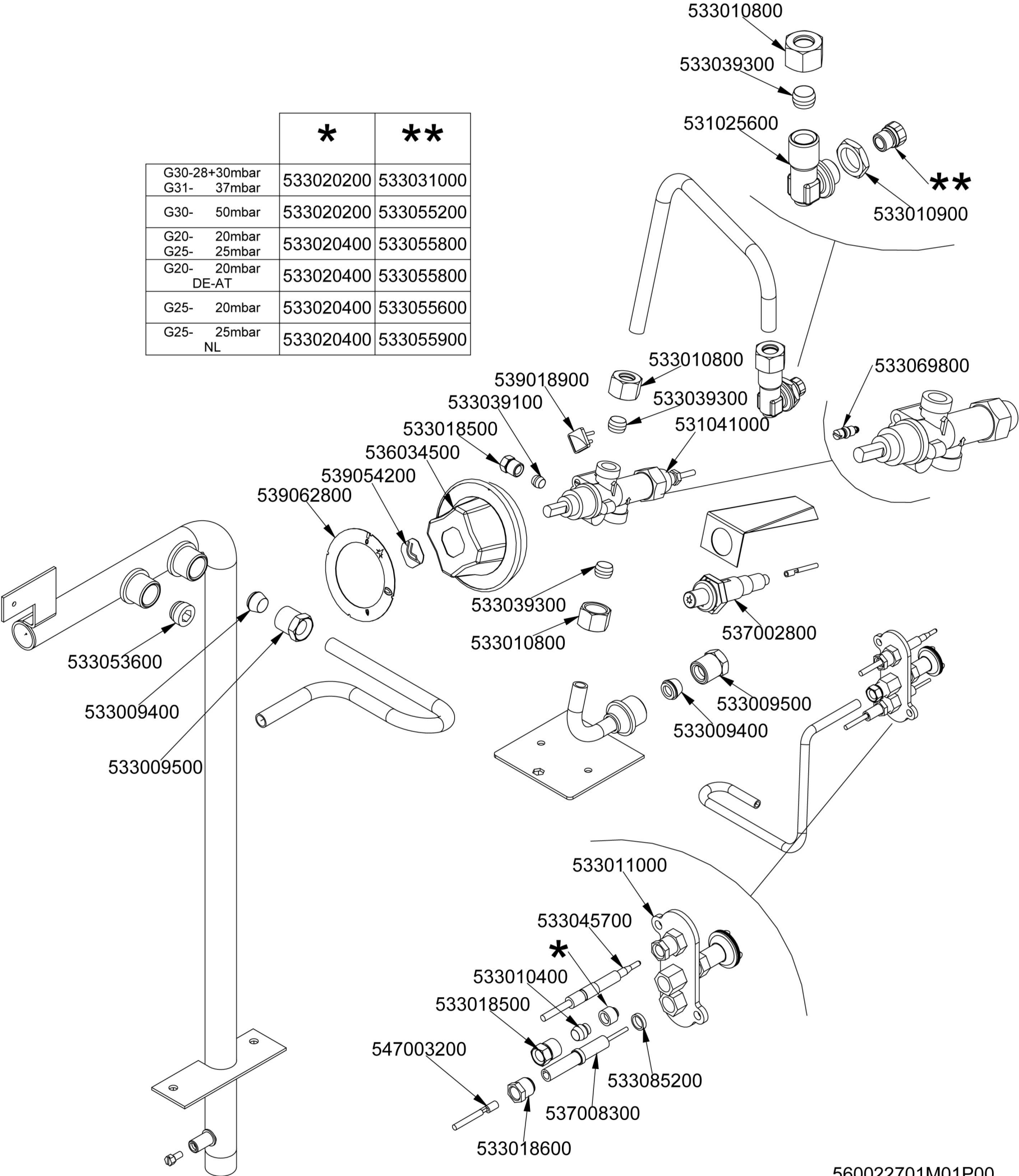


	*	**
G30-28+30mbar G31- 37mbar	533020200	533031000
G30- 50mbar	533020200	533055200
G20- 20mbar G25- 25mbar	533020400	533055800
G20- 20mbar DE-AT	533020400	533055800
G25- 20mbar	533020400	533055600
G25- 25mbar NL	533020400	533055900



Page	Pos	Code	Description
001		532004100	FLUE GRID L=370 90LINE (RAF
001		541132601	"V" GRID FOR CW-94
001		536014600	GRIP D.28*90*M10 CW
001		541132801	SPLASH SHIELD CW-98
001		541116001	UPPER PLATE CW-98
001		536014800	LAVASTONE
001		541132901	STONE SUPPORTING FRAME CW-94G
001		544436900	CENTRAL TOP FOR SPLASH GUARD CW98
001		531044501	BURNER CW-G 90 LINE
001		533100900	AIR ADJUSTMENT BUSHING D22 EST.H38
001		541058700	BURNER COUPLING BUSHING CW-G
001		544407400	LEFT SIDE PANEL 70 LINE
001		544023901	SPATTLE FOR FRY-TOP
001		541114000	DRAINER DRAWER CW-G 90LINE
001		541108500	CONTROL PANEL CW-78/98G
001		544407300	RIGHT SIDE PANEL 90 LINE
001		536005200	INOX LEG 2" 120-180 M10
002		533010800	TUBE NUT D.10 M16*1,5
002		533039300	BICONE §10
002		531025600	ELBOW 90° NOZZLE-HOLDER §10 PIPE
002		533031000	NOZZLE §175 CH12X14
002		533055200	NOZZLE §153 CH12*14 M/L-FQ/P65
002		533055800	NOZZLE CH12X14,0 Ø250
002		533055600	NOZZLE §280 CH12*14
002		533055900	NOZZLE CH12X14,0 Ø265
002		533010900	NUT M14*1 H.4
002		533069800	BY PASS COCK §110 20S-21S
002		531041000	SAFETY TAP 21S-B
002		539018900	INDEX FOR KNOB W/RED SIGN
002		533039100	BICONE §6
002		533018500	FITTING FOR BICONE D.6 M10*1
002		536034500	KNOB §77 4P. §08*6,5
002		539054200	STAMP Ø20,5 CR."L" LOTUS R.
002		539062800	RED STICKING DISK 72
002		533053600	EUROSIT VALVE PLUG
002		533009400	BICONE 10S
002		533009500	NIPPLE FOR BICONE 10S
002		547003200	HIGH-VOLTAGE CABLE TUBE.§2 L=500
002		533018600	PLUG FITTING
002		537008300	ROUND PLUG §2,4- LONG ELECTRODE
002		533010400	BICONE D.6
002		533085200	SPACER FOR PILOT PLUG
002		533020200	PILOT JETS 0160 FOR LPG §30
002		533020400	NOZZLE 0160 (NATURAL GAS) 51
002		533045700	THERMOCOUPLE M9*1 500
002		533011000	PILOT BURNER 3 FLAMES 320
002		537002800	PIEZOELECTRIC IGNITION M18 WITH NUT