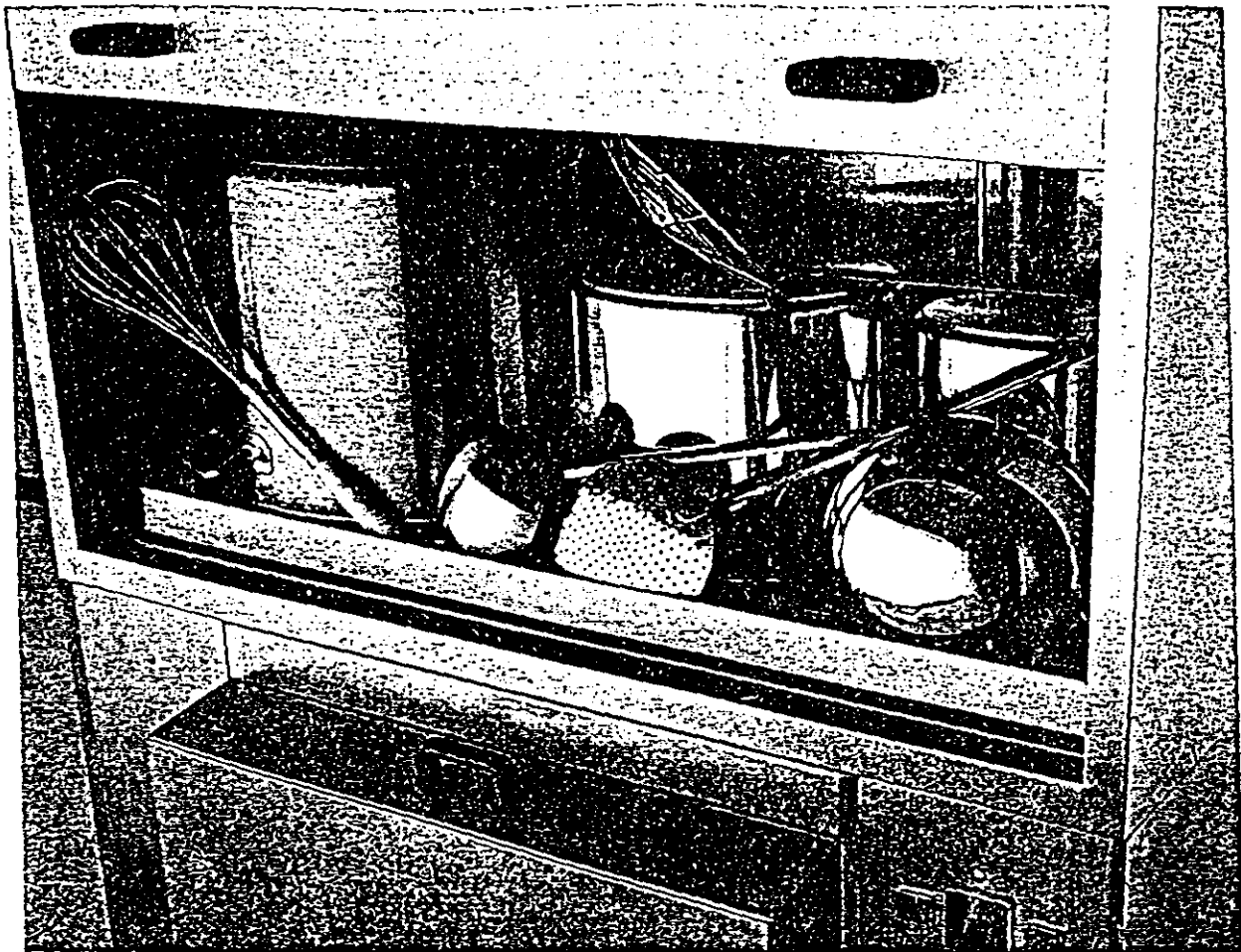


Lavapentole professionali di lunga durata



Serie G

Modello G 66

(capacità cestello cm 72x55x60 h)

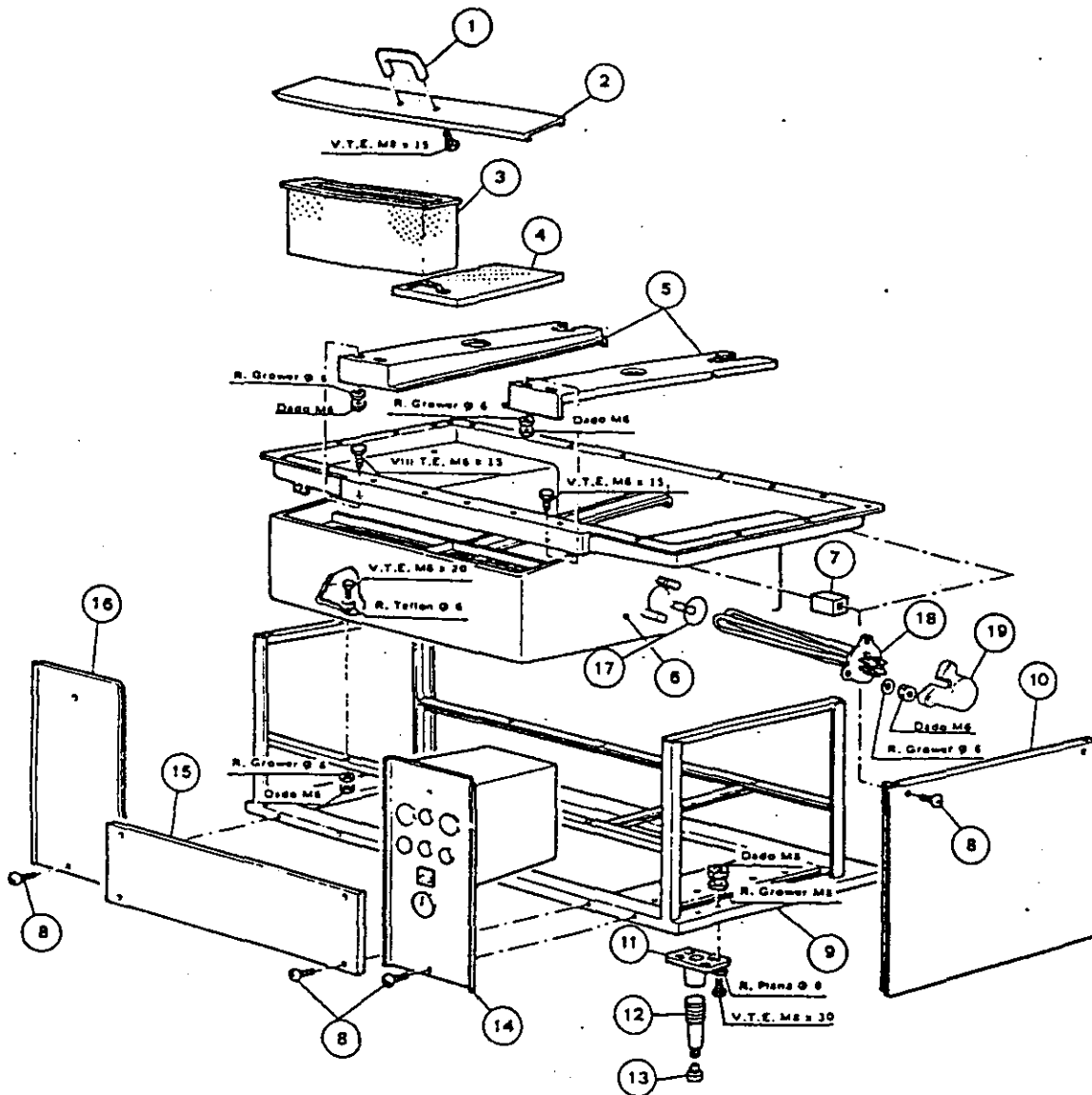
Modello G 131 *alt*

(capacità cestello cm 137x55x60 h)

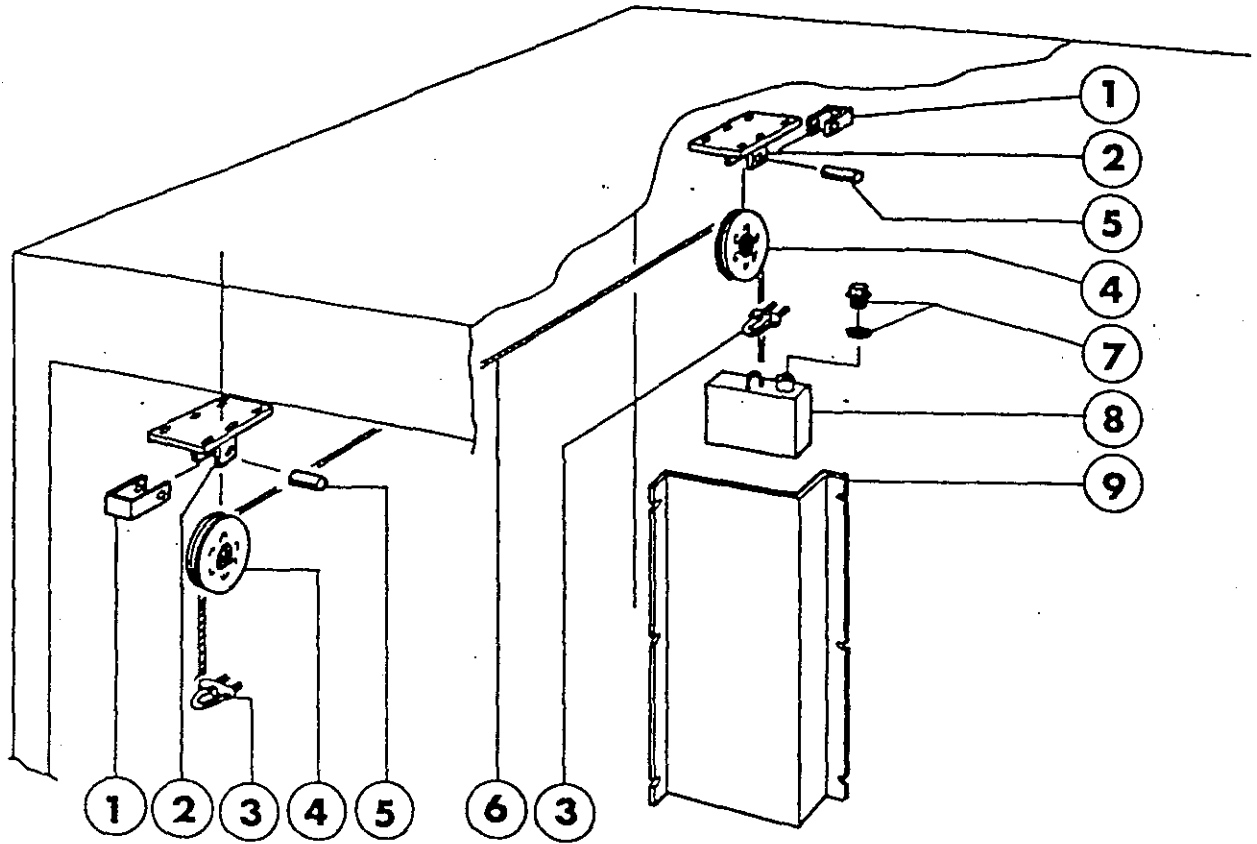
- a nastro per lavaggio a ciclo continuo
- speciali per esigenze particolari



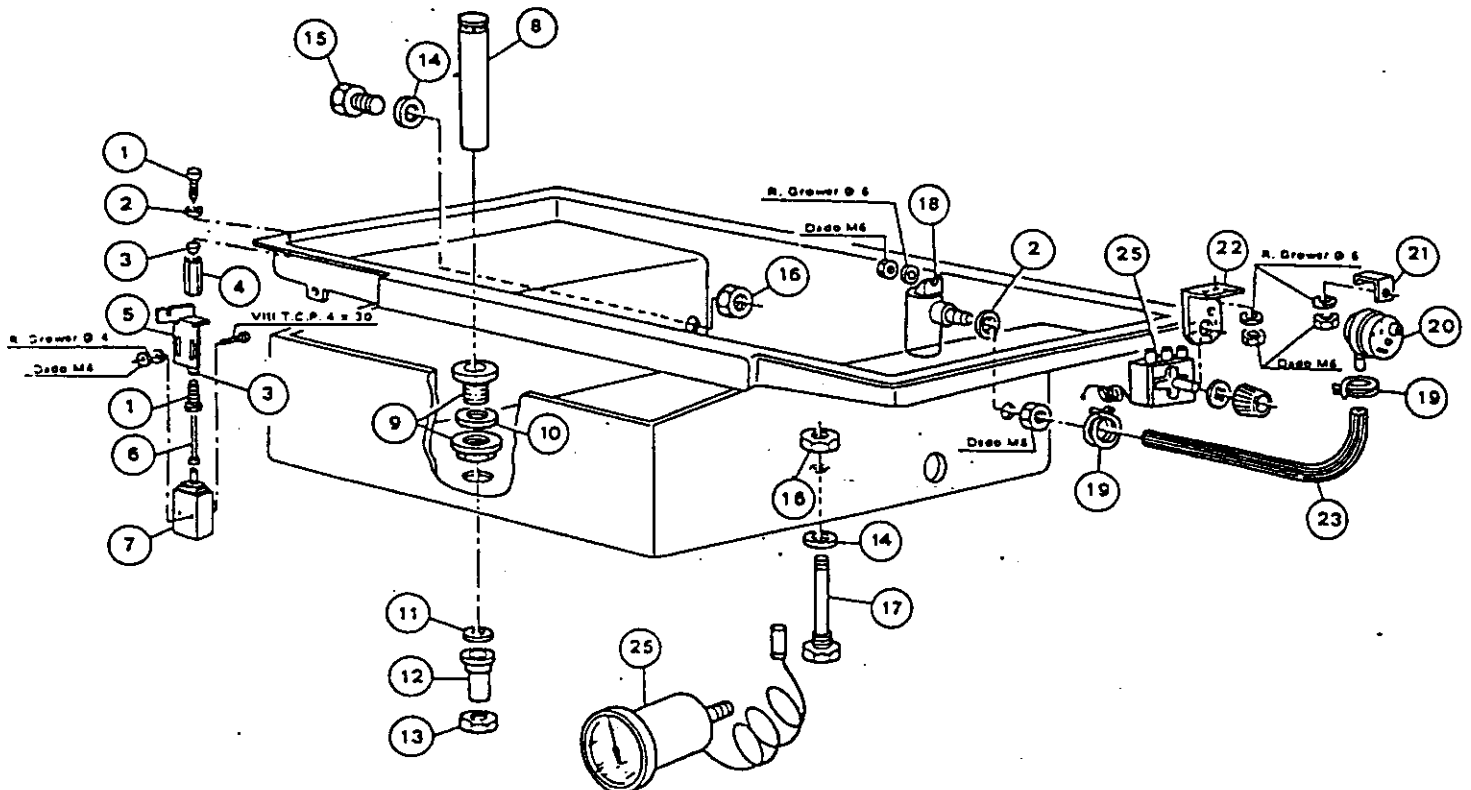
L'alta professionalità del lavaggio.



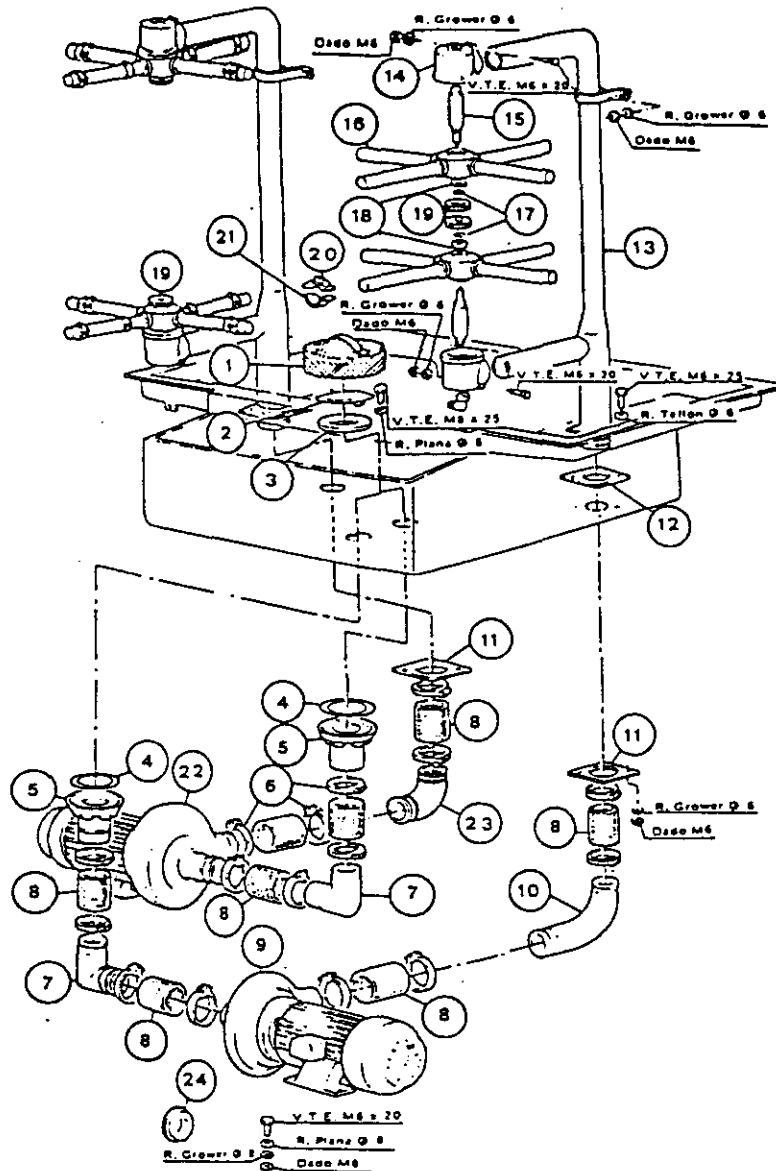
Posiz.	Codice - Code Code - Codex	Descrizione	Denomination	Description	Bezeichnung
1	450303	Maniglia per porte	Poignée	Handle	Türgrill
2	320326	Coperchio per filtro	Couvercle G131	Basket cover G 131	Filterdeckel G131
3	330532	Filtro a cestello	Filtre a panier G131	Basket support G 131	Korbfilter G131
4	330534	Filtro vasca	Filtre G131	Tank strainer G 131	Tankfilter G131
5	321017	Traverse portafiltro	Supportes filtre G131	Strainer support G 131	Filteraufnahme G131
6	340842	Vasca G131	Cuve G131	Tank G 131	Tank G131
7	160502	Distanziale fiss. pannelli	Rondelle	Spacer	Distanzbock Verkliridung
8	260224	Viti speciali TB6 x 15	Vis TB6 x 15	Special screw TB6x15	Schraube TB6 x 15
9	390268	Telaio lavapentole G131	Chassis G131	Frame G 131	Rahmen G131
10	350261	Pannello laterale G66 - 131	Panneau lateral G66 - 131	Side panel G 66 - 131	Schalttafel G66 - 131
11	510132	Supporto piede	Support	Foot support	Füßhalterung
12	510133	Piede	Pied	Foot	Füße
13	210404	Piedino	Pied	Foot	Füße
14	110105	Impianto elettrico 380/3E	Tableau électrique 380/3E	Electric panel 380/3E	E-Schalttafel 380/3E
14	110107	Impianto elettrico 380/3	Tableau électrique 380/3	Electric panel 380/3V	E-Schalttafel 380/3
14	110109	Impianto elettrico 220/3E	Tableau électrique 220/3E	Electric panel 220/3E	E-Schalttafel 220/3E
14	110111	Impianto elettrico 220/3V	Tableau électrique 220/3V	Electric panel 220/3V	E-Schalttafel 220/3V
15	350165	Pannello frontale inferiore	Panneau frontal inf.	Front panel	Frontblende
16	350167	Pannello frontale sinistro	Panneau frontal gauche	Left hand panel	Linke Blende
17	200815	Guarnizione OR	O-Ring	O-Ring	O-Ring
18	110349	Resistenza 6000W	Résistance 6000W	Heater 6000 W	Heizkörper 6000W
19	161102	Copriresistenza	Protection résistance	Element cover	Heizkörperschutz



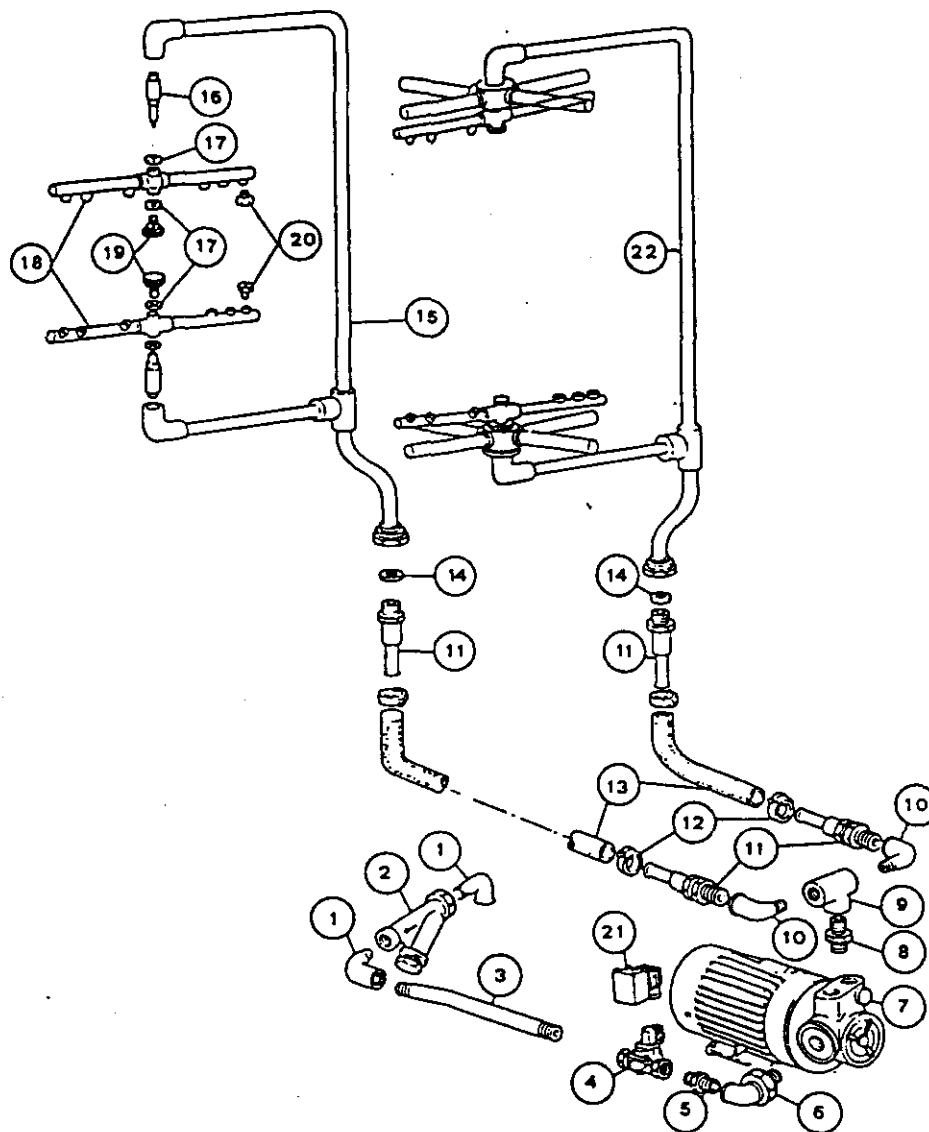
Pos.	N.Codice	Descrizione	Denomination	Description	Bezeichnung
1	350753	Squadretta fermo	Equerre	Bracket	Winkel
2	340274	Supporto per ruota	Support	Wheel support	Radhalterung
3	341009	Cavallotto	Contre-bride	Bracket	Klemmstück
4	170315	Ruota	Roue	Wheel	Rad
5	330816	Bussola	Douille	Bushing	Büchse
6	390305	Fune acciaio	Câble	Cable	Stahlseil
7	160704	Tappo	Bouchon	Plug	Propfen
8	321533	Contenitore	Container	Container	Behälter
9	340315	Paratia	Paroi	Air deflector	Luftleichblech



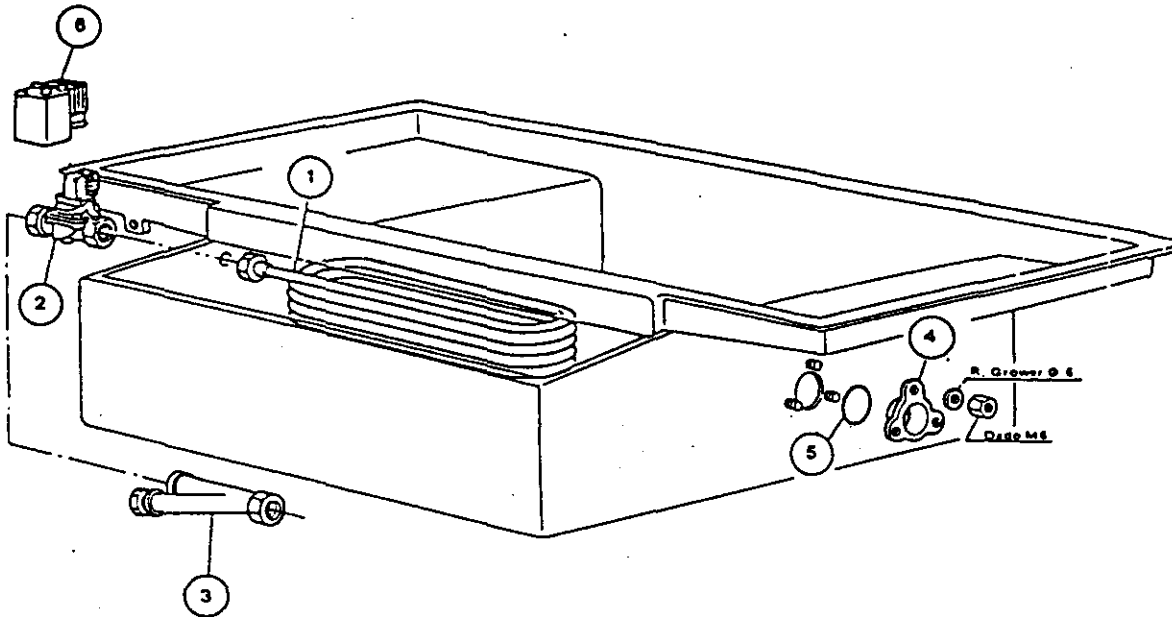
Posiz.	Codice - Code Code - Codex	Descrizione	Denomination	Description	Bezeichnung
1	380138	Dado di bloccaggio	Ecrou	Lock nut microswitch	Mutter Endschalter
2	200415	Guar. in dutral per trappole	Joint	Dutral gasket	Dutral Dichtung Luftfalle
3	200431	Guar. di tenuta a labbra	Joint	Gasket	Lippenring
4	380139	Canotto micro	Protection micro	Micro switch connector	Durchführung Endschalter
5	330701	Squadretta per micro G131	Equerre micro G131	Micro switch bracket	Endschalterwinkel
6	340488	Perno micro G131	Axe micro G131	Micro switch pin G131	Endschalterstift G131
7	120312	Microinterruttore Crouzet	Micro interrupteur	Micro switch	Endschalter
8	380806	Troppopieno G131	Trop plein G131	Overflow tube	Überfallrohr G131
9	270403	Piletta e ghiera 1" 1/2	Embout 1" 1/2	Outlet and lock nut	Ablaufstutzen und Gewinding 1" 1/2
10	200410	Guarnizione piletta 1" 1/2	Joint 1" 1/2	Drain outlet washer	Dichtung Ablauf 1" 1/2
11	460506	Guar. 45x33x2 Amiantite	Joint 45x33x2	Asbestos gasket	Asbest Dichtung 45x33x2
12	160201	Cod. scarico risc. al prerisc.	Vidange	Drain	Ablaufstutzen
13	280403	Ghiera ottagonale 1" 1/2	Embout 1" 1/2	Lock nut	8 - Kantmutter 1" 1/2
14	460502	Guar. amiantite 30x21x2	Joint 30x21x2	Asbestos gasket	Asbest Dichtung 30x21x2
15	290105	Tappo TE 1/2" Ottone	Bouchon TE 1/2" laiton	Brass-plug	MS - Stopfen
16	270101	Controdado 1/2" esag. 30	Contre ecrous	Lock nut 1/2"	1/2" Gegenmutter Sechskant 30
17	450514	Guaina per termostato	Gaine thermostat	Thermostat shield	Schutzhülle Thermostat
18	161301	Trap. aria per pressostato	Trappe pressostat	Airtrap press.switch	Luftfalle Druckwächter
19	450115	Fascetta elastica	Collier	Clamp	Schelle
20	130604	Pressostato a livello 80	Pressostat niveau 80	Pressure switch	Druckwächter 80
21	350722	Squadretta pressostato	Equerre pressostat	Press.switch bracket	Druckwächterwinkel
22	330725	Squadretta unificata	Equerre	Bracket	Normwinkel
23	200353	Tubo pressostato	Tuyau pressostat	Press.switch hose	Druckwächterschlauch
24	120501	Termostato	Thermostat	Thermostat	Thermostat
25	450905	Termometro capillare Mt 1,5	Thermometre Mt 1,5	Thermometer wt. 1,5	Kapillarthensiometer Mt 1,5



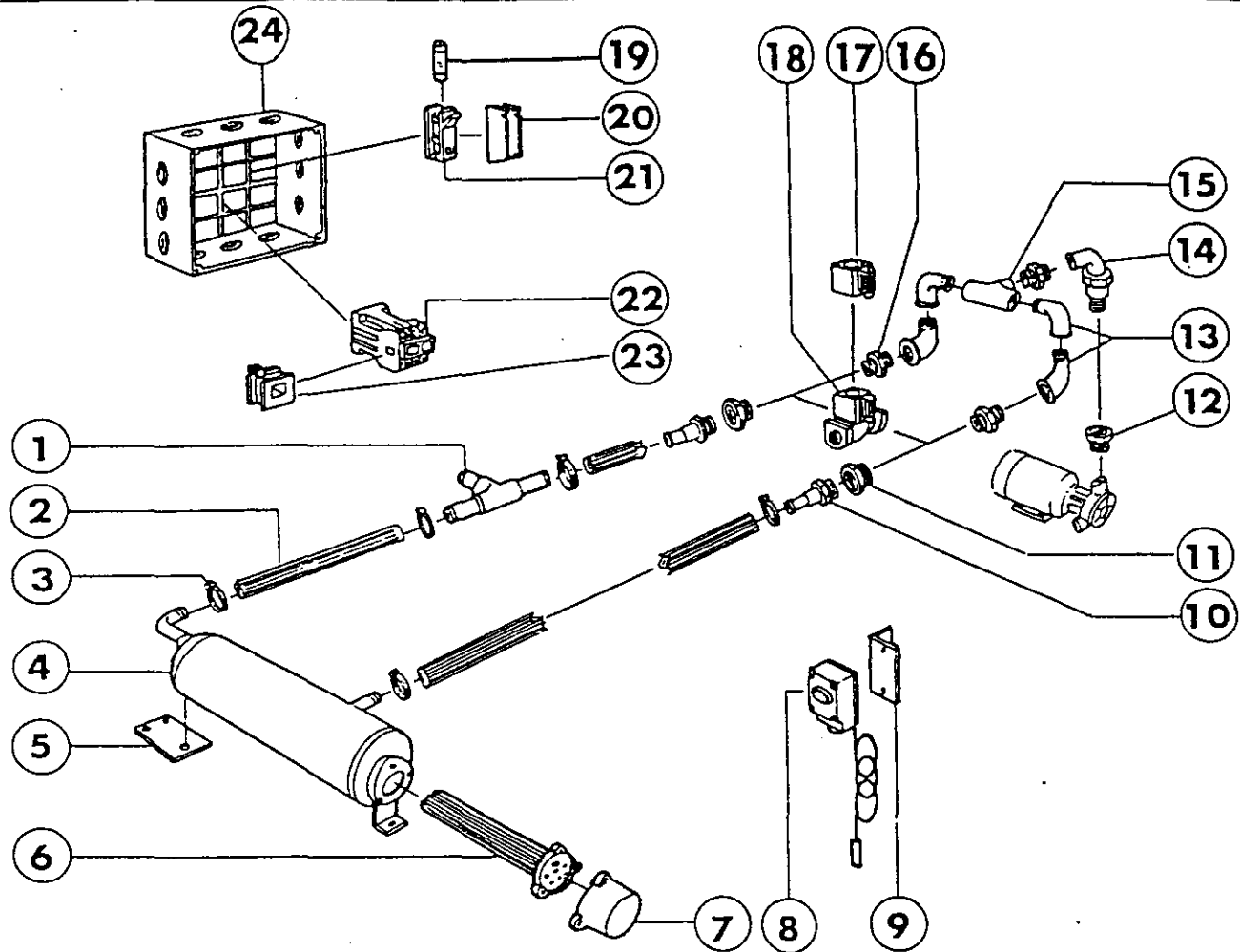
Posiz.	Codice - Code Code - Codex	Descrizione	Denomination	Description	Bezeichnung
1	330528	Filtro Ø 195	Filtere Ø 195	Strainer	Filter Ø 195
2	191012	Deflettore aspirazione	Deflecteur	Channel	Deflektor
3	180204	Contro flangia Ø 130	Contre flasque Ø 130	Flange Ø 130	Gegenflansch Ø 130
4	200807	Anelli tenuta OR	OR	O-Ring	O - Ring
5	510301	Raccordo aspirazione N	Raccord	Nipple	Rohrverbindung
6	450113	Fascette norma S 82/15	Collier S 82/15	Clamp	Schelle S 82/15
7	400571	Gomito aspirazione	Coude aspiration	Suction hose	Saugstutzen
8	200112	Tubo gomma 75 x 83	Tuyau 75 x 83	Rubber hose	Gummischlauch 75 x 83
9	100382	Pompa destra 4 HP	Electro pompe HP 4 droite	Pump HP 4 right	Pumpe 4 PS rechts
10	400566	Gomito mandata G131	Coude G131	Discharge hose G 131	Druckstutzen G131
11	380907	Controflangia colonna lav.	Contre flasque	Flange	Gegenflansch
12	200448	Guarnizione colonna lav.	Joint	Gasket	Dichtung
13	420308	Colonna di lavaggio	Colonne lavage	Standpipe	Zuleitung
14	510280	Supporti per mulinello	Support tourniquet	Wash arm support	Spülarmauflage
15	340489	Alberino mulinello	Axe tourniquet	Spindle	Welle
16	420505	Mulinello di lavaggio	Tourniquet lavage	Wash arm	Wascharm
17	440816	Seeger inox Ø 48	Seeger inox Ø 48	Snap ring	Seeger - Ring Ø 48
18	160820	Rondella slittamento G131	Rondelle G131	Safety ring	Gleitring G131
19	510284	Ghiera mulinello lav. G131	Embont tourniquet G131	Threaded ring G 131	Gewindingring G131
20	170910	Ugello lavaggio	Gicleur	Wash arm	Waschdüse
21	180211	Controflangia ugello lav.	Contre flasque	Counterflange wash jet	Gegenflansch Waschdüse
22	100383	Pompa sinistra 4 HP	Electro pompe HP 4 gauche	Pump 4 HP left	Pumpe 4 PS linke
23	400563	Gomito mandata G131	Coude G131	Discharge hose G 131	Druckstutzen G131
24	630504	Guarnizione	Joint	Gasket	Dichtung



Posiz.	Codice - Code Code - Codex	Descrizione	Denomination	Description	Bezeichnung
1	300411	Gomiti 1" MF	Coude 1" MF	Elb	1" Kniestück
2	310603	Filtro Juker 1"	Filtre Juker 1"	Strainer 1"	1" Juker Filter
3	400567	Tubo entrata acqua risciac.	Durite arrivee d'eau	Rinse water inlet hose	Einlauf Nachspülung
4	120134	Elettrovalvola Burkert 1"	Electrovanne Burkert 1"	Solenoid valve 1"	Burkert 1" - E - Ventil
5	300211	Nipples 1" M/M	Raccord 1" M/M	Nipple	1" Nippel a-Gewinde
6	300608	Bocchettone gomito MF 1"	Coude MF 1"	Union ell	Stutzen 1" s.v.i. Gew
7	100304	Pompa 0,5 HP Calpeda	Electropompe HP 0,5	Pump 0,5 HP	0,5 PS Pumpe
8	310305	Riduzione 1" - 1/2" MF	Reducteur 1" - 1/2" MF	Reduction	Reduzierstück 1" - 1/2"
9	300902	TE 1/2"	TE 1/2"	TE 1/2"	TE 1/2"
10	300409	Gomiti MF 1/2"	Coude MF 1/2"	Elb	1/2" Kniestück
11	290401	Portagomma M 1/2" Ott.	Raccord M 1/2" Ot.	Hose barb	M8 Gumminippel a.
12	450104	Fascetta 16 - 28	Collier 16 - 28	Clamp 16-28	Schelle 16 - 28
13	200113	Tubo gomma Ø 12 x 22	Durite Ø 12 x 22	Rubber hose	Gummischlauch Ø 12 x 22
14	460502	Guar. Amiantite 30x21x2	Joint 30x21x2	Gasket	Dichtung 30x21x2
15	331340	Tubo risciacquo G131	Tuyau rinçage G131	Rinse hose G 131	Rohr Nachspülung G131
16	340489	Alberino mulinello	Axe tourniquet	Spindle	Welle
17	160821	Rondella slittamento	Rondelle	Ring	Gleitring
18	190613	Bussola per mulini Ris.	Douille	Bushing	Büchse
19	430306	Mulinello di risciac. G131	Tourniquet G131	Rinse arm G 131	Nachspülarm G131
20	261004	Vite fiss. mulinello	Vis	Screw	Schraube
21	380314	Nebulizzatori	Nébulisateur	Nozzle	Sprühdüsen
22	630965	Bobine elettrovalvola	Bobine électrovanne	Solenoid	Spule
22	331341	Tubo risciacquo destro	Tuyau rinçage droite	Right rinse hose	Rechts Rohr Nachspülung



Posiz.	Codice - Code Code - Codex	Descrizione	Denomination	Description	Bezeichnung
1	240716	Serpentina vapore	Serpentin	Steam coil	Dampfschlange
2	120107	Elettrovalvola L149 Vap.	Electrovanne L149	Solenoid valve	E-Ventil L149
3	310602	Filtro Juker 3/4"	Filtre Juker 3/4"	Strainer	1" Juker Filter
4	330910	Tappo	Bouchon	Plug	Propfen
5	200815	Guarnizione OR	O-Ring	O-Ring	O-Ring
6	630952	Bobina L149 - 24V	Bobine L149 - 24V	Coil	Spule L149 - 24V



Pos.	N.Codice	Descrizione	Denomination	Description	Bezeichnung
1	180403	Portagomma a T	Tetine	Hose barb	Anschluss
2	200113	Tubo gomma Ø 12x22	Durite	Rubber hose	Gummischlauch
3	450104	Fascetta Ø 16-28	Collier	Clamp	Schelle
4	330320	Boiler	Surchauffeur	Booster	Durchlauferhitzer
5	390524	Supporto	Support	Support	Support
6	110362	Resistenza 9 KW	Résistance	Heating element	Heizkörper
7	161102	Copriresistenza	Protection résist.	Element cover	Heizkörperchutz
8	120515	Termostato 30-90°C	Thermostat	Thermostat	Thermostat
9	350737	Squadretta termost.	Equerre	Bracket	Winkel
10	290410	Portagomma 1/2" M	Raccord	Hose barb	Anschluss
11	310302	Riduzione 3/4" M-1/2" F	Réduction	Reduction	Verminderung
12	300203	Riduzione 1" M-3/4" F	Réduction	Reduction	Verminderung
13	300410	Gomito 3/4" MF	Coude	Ell	Kniestück
14	300612	Bocchettone curvo	Goulotte	Union ell	Kniestück
15	300903	TE 3/4" F	Raccord T	Tee	T-Stück
16	300210	Nipple 3/4" MM	Nipples	Nipple	Nippel
17	630944	Bobina V 24	Bobine	Coil	Spule
18	120122	Elettrovalvola SIRAI	Electrovanne	Solenoid valve	E-Ventil
19	130236	Fusibile 25 A	Fusible 25 A	Fuse 25 A	Schmelzsicherung 25A
19	130237	Fusibile 32 A	Fusible 32 A	Fuse 32 A	Schmelzsicherung 32A
20	150616	Custodia SS1	Boite	Box	Gehäuse
21	150613	Portafusibile	Porte fusible	Fuse holder	Sicherungshalterung
22	120437	Teleruttore 25 A	Contacteur	Contacteur	Schütz
23	630955	Bobina 24V - 25A	Bobine 24V - 25A	Coil 24V - 25A	Spule 24V - 25A
24	110148	Quadro completo	Boite electr.	Electrical box	Schaltkasten