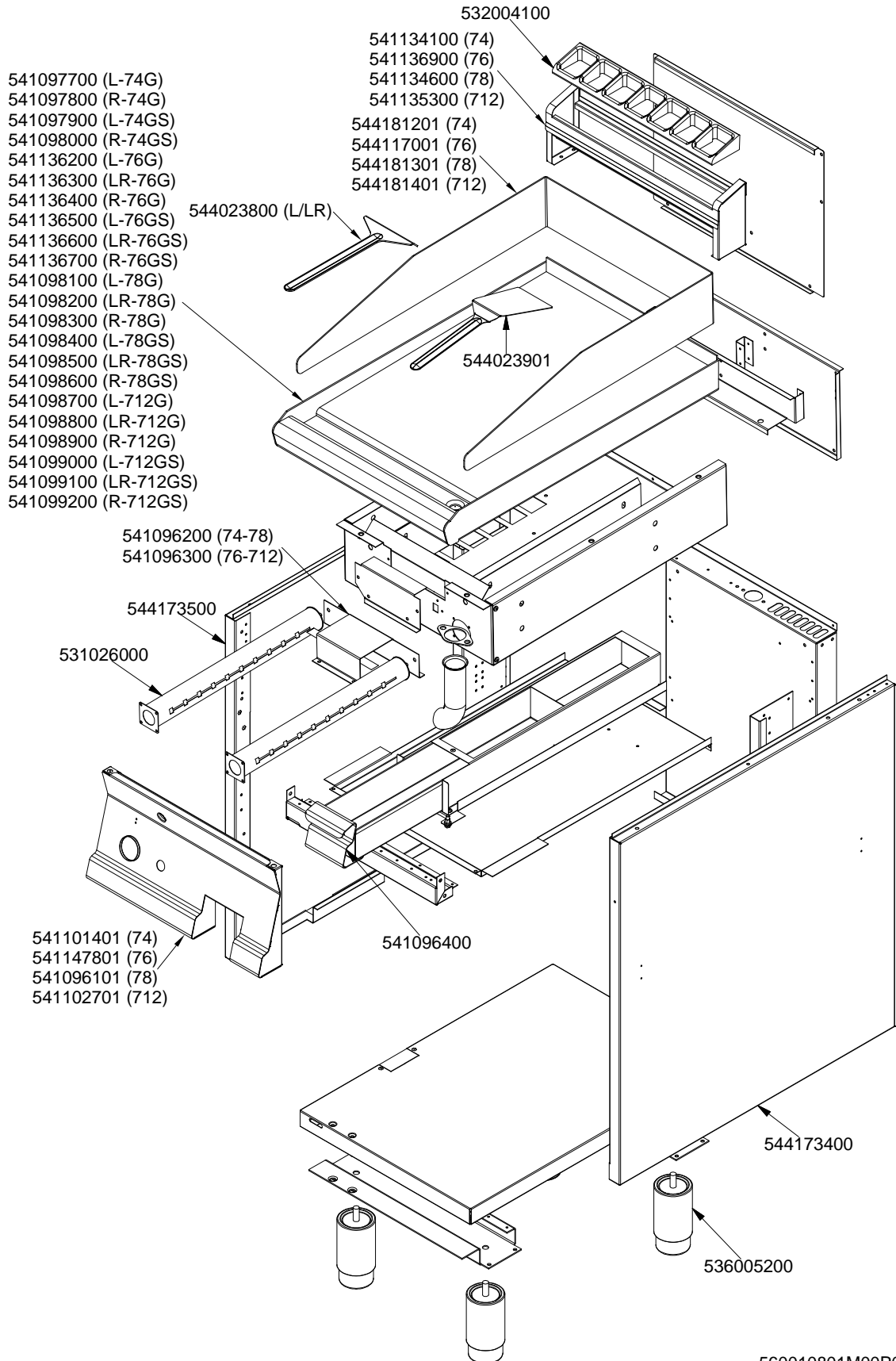


# SUPERLOTUS 70≥0602

GAS / GAS / GAS / GAZ

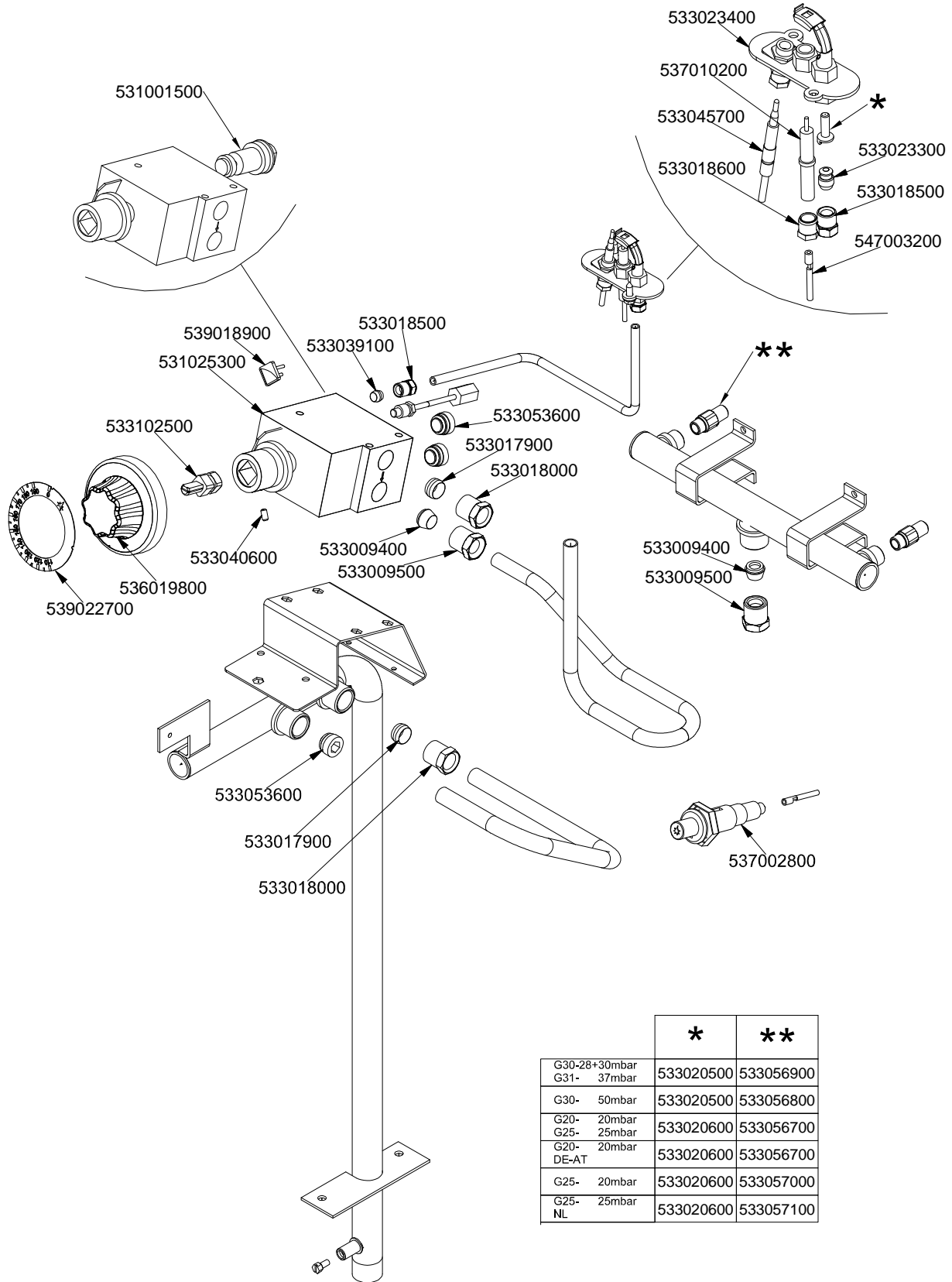
## FT...-74G FT...-76G FT...-78G FT...-712G



# SUPERLOTUS 70≥0602

GAS / GAS / GAS / GAZ

FT...-74G FT...-76G FT...-78G FT...-712G



	*	**
G30-28+30mbar G31- 37mbar	533020500	533056900
G30- 50mbar	533020500	533056800
G20- 20mbar G25- 25mbar	533020600	533056700
G20- 20mbar DE-AT	533020600	533056700
G25- 20mbar	533020600	533057000
G25- 25mbar NL	533020600	533057100

560034501M00P00

Page	Pos	Code	Description
001		532004100	FLUE GRID L=370 70LINE (RAF)
001		541136900	LOW SPACER 7 6
001		544117001	SPLASH GUARD FT-76
001		541136400	UPPER PLATE FTR-76G
001		541096300	BURNER SUPPORT FT-76G FT-712G
001		544173500	LEFT SIDE PANEL S.70
001		531026000	BURNER FT-4/6/8G BM-4G
001		541096400	DRIP TRAY FT S.70
001		544023901	SPATTLE FOR FRY-TOP
001		541147801	CONTROL PANEL FT-7_6G FT-9_6G
001		544173400	RIGHT SIDE PANEL S.70
001		536005200	INOX LEG 2" 120-180 M10
002		533023400	"TARGET" PILOT + NIPPLE TC
002		537010200	ROUND PLUG §2,4 - SHORT ELECTRODE
002		533045700	THERMOCOUPLE M9*1 500
002		533018600	PLUG FITTING
002		533023300	BICONE §6 ("TARGET" PILOT)
002		533018500	FITTING FOR BICONE D.6 M10*1
002		547003200	HIGH-VOLTAGE CABLE TUBE.§2 L=500
002		531001500	MAGNET FOR EUROSIT VALVE
002		533039100	BICONE §6
002		539018900	INDEX FOR KNOB
002		531026300	
002		533102500	
002		539022700	ADHESIVE GRADUATED DISC FOR KNOB
002		536019800	BLACK KNOB §70 PIN §8*6,5
002		533040600	HEADLESS SCREW M4*8
002		533009400	BICONE 10S
002		533009500	NIPPLE FOR BICONE 10S
002		533053600	EUROSIT VALVE PLUG
002		533017900	BICONE D.12
002		533018000	ELBOW FOR BICONE D.12 3/8 RS L20
002		537002800	PIEZOELECTRIC IGNITION M18
002		533020500	NOZZLE 0.140 §19
002		533056900	NOZZLE §87 CH12*30 G-FT4/8
002		533056800	NOZZLE §77 CH12*30 F-FT4/8
002		533020600	NOZZLE 0.140 §27
002		533056700	NOZZLE §135A CH12*30 M-FT4/8
002		533057000	NOZZLE §150A CH12*30 L-FT4/8
002		533057100	NOZZLE §140A CH12*30 M-FT4/6/8