



Snackgeräte
Toaster

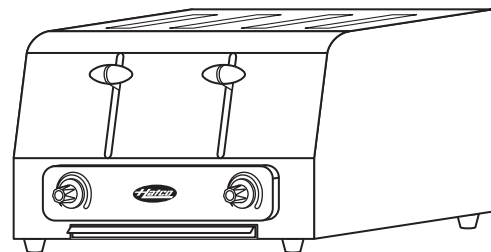
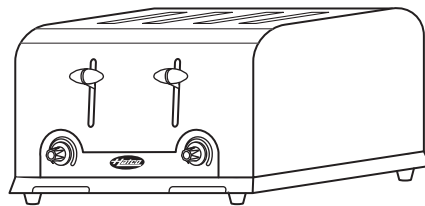
Artikel-Nr. 222006
(TPT230-4)

Explosionszeichnung / Ersatzteile

TOASTER Pop Up

TPT Series

TPT-120	TPT-208	TPT-240
TPT-120CA	TPT-208CA	TPT-230-4



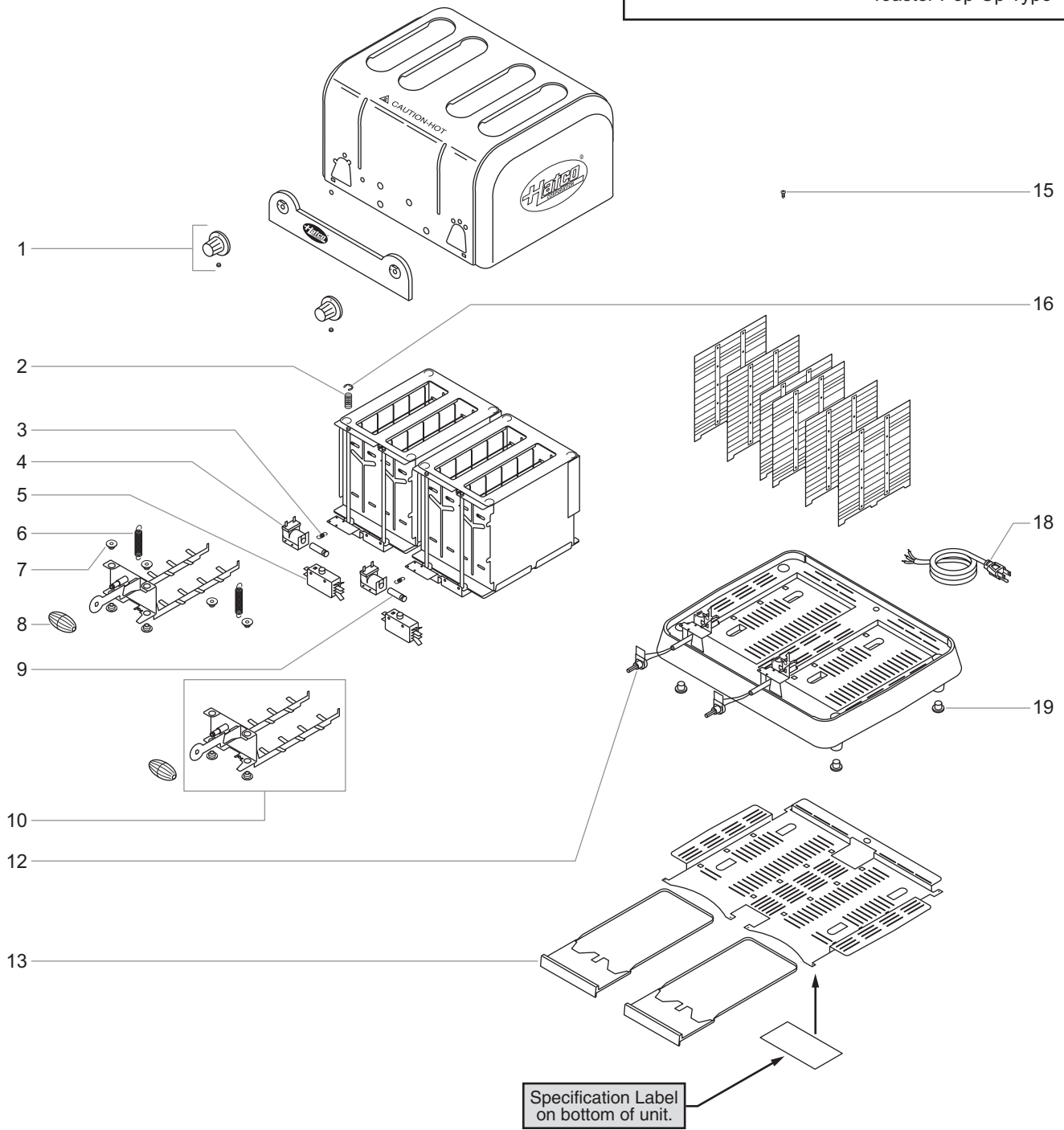
REPLACEMENT PARTS LIST

HATCO POP-UP TOASTER

TPT-120, TPT-120CA Models

Model Designation
TPT-XXXCA

CA = Canada
 Voltage
 Toaster Pop-Up Type



24 Hour 7 Day Parts and Service Assistance available in the United States and Canada by calling (800) 558-0607.

CAUTION

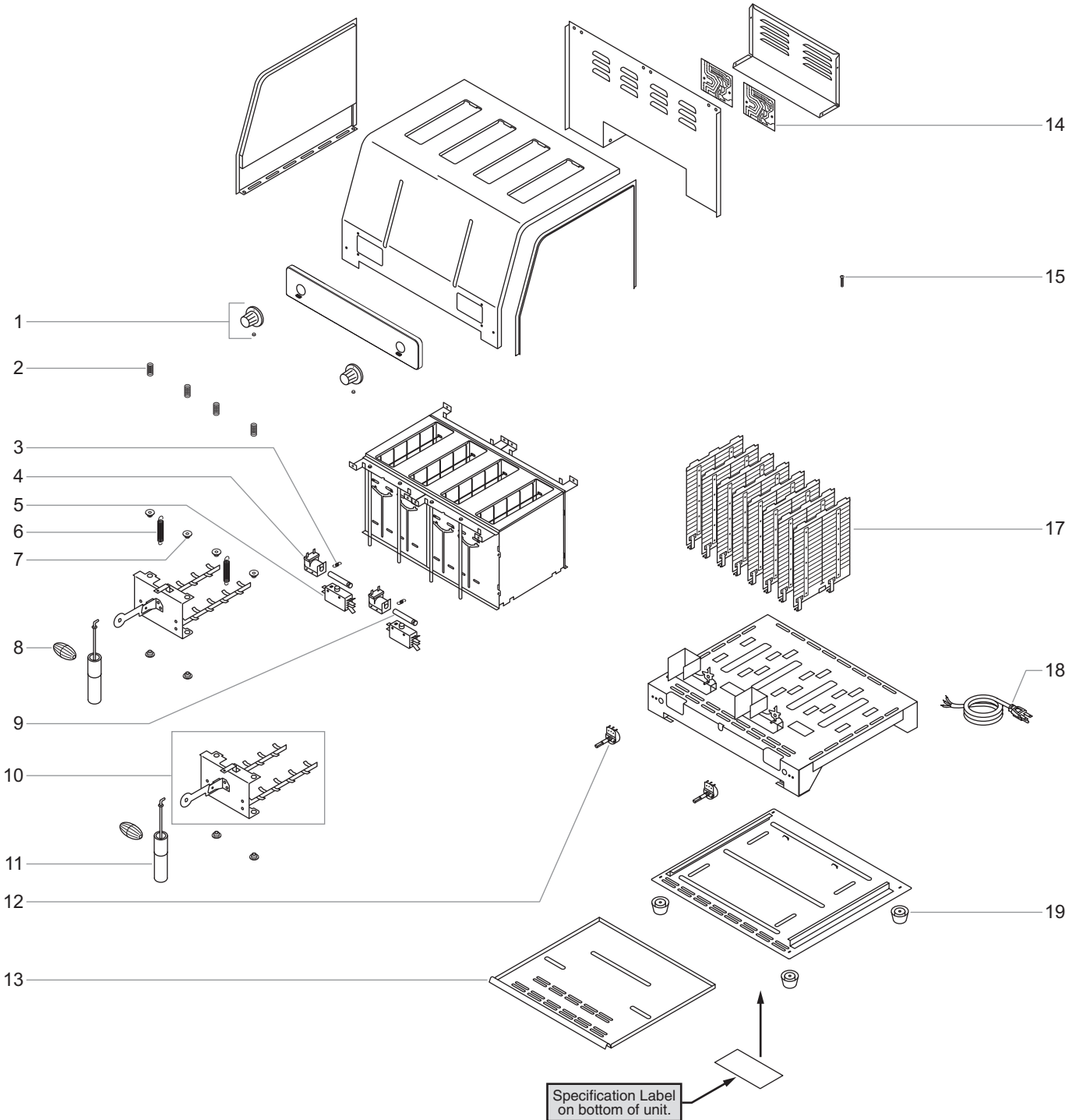
Use of replacement parts other than those supplied by Hatco Corporation may result in damage to the unit or injury to personnel and will void all warranties.



HATCO POP-UP TOASTER
TPT-208, TPT-208CA, TPT-240, TPT-230-4 Models

Model Designation
T P T - X X X C A

- CA = Canada
- 4 = Qty. of Toasting Slots
- Voltage
- Toaster Pop-Up Type



PARTS COMMON TO ALL TPT MODELS

Item	Description	Part No.	Qty.	Item	Description	Part No.	Qty.
1	Knob, Color Control	X05.30.115.00	2	5	Mirco Switch, DPDT	X02.19.193.00	2
2	Damping Spring	X05.08.017.00	4	6	Carriage Spring	X05.08.016.00	2
3	Return Spring, Solenoid	X05.08.015.00	2	7	Shaft Bushing	X05.02.028.00	8
4	Solenoid	X02.20.342.00	2	8	Knob, Carriage Handle Assembly	X05.30.125.00	2

PARTS SPECIFIC TO MODEL TPT-120		
Item	Description	120V
9	Plunger, Solenoid (Qty. 2)	X02.20.343.00
10	Carriage Handle Assembly (Qty. 2)	X04.05.546.00
11	Damper Assembly	---
12	Potentiometer, Color Control (Qty. 2)	X02.13.334.00
13	Crumb Tray Assembly (Qty. 2)	X04.05.547.00
14	Printed Circuit Board	---
15	Screw	X05.04.559.00
16	E-Ring (Qty. 2)	X05.04.558.00
17	Heating Element Assembly	---
18	Power Cord and Plug	02.18.154.00
19	Rubber Foot (Qty. 4)	X05.30.114.00

PARTS SPECIFIC TO MODEL TPT-120CA		
Item	Description	120V (Canada)
9	Plunger, Solenoid (Qty. 2)	X02.20.343.00
10	Carriage Handle Assembly (Qty. 2)	X04.05.546.00
11	Damper Assembly	---
12	Potentiometer, Color Control (Qty. 2)	X02.13.334.00
13	Crumb Tray Assembly (Qty. 2)	X04.05.547.00
14	Printed Circuit Board	---
15	Screw	X05.04.559.00
16	E-Ring (Qty. 2)	X05.04.558.00
17	Heating Element Assembly	---
18	Power Cord and Plug	02.18.089.00
19	Rubber Foot (Qty. 4)	X05.30.114.00

NOTE: The last four digits in a ten digit numerical serial number are the manufacturing date code.

Example: Serial number 4140440732 has a date code of "0732", which indicates the following: 0732

└─ Week Thirty-Two
└─ Year 2007

PARTS SPECIFIC TO MODEL TPT-208		
Item	Description	208V
9	Plunger, Solenoid (Qty. 2)	X02.20.344.00
10	Carriage Handle Assembly (Qty. 2)	X04.05.548.00
11	Damper Assembly	X04.05.550.00
12	Potentiometer, Color Control (Qty. 2)	X02.13.335.00
13	Crumb Tray Assembly	X04.05.549.00
14	Printed Circuit Board (Qty. 2)	X02.01.258.00
15	Screw	X05.04.561.00
16	E-Ring	---
17	Heating Element Assembly (Qty. 8)	X02.09.273.00
18	Power Cord and Plug	02.18.036.00
19	Rubber Foot (Qty. 4)	X05.30.116.00

PARTS SPECIFIC TO MODEL TPT-208CA		
Item	Description	208V (Canada)
9	Plunger, Solenoid (Qty. 2)	X02.20.344.00
10	Carriage Handle Assembly (Qty. 2)	X04.05.548.00
11	Damper Assembly	X04.05.550.00
12	Potentiometer, Color Control (Qty. 2)	X02.13.335.00
13	Crumb Tray Assembly	X04.05.549.00
14	Printed Circuit Board (Qty. 2)	X02.01.258.00
15	Screw	X05.04.561.00
16	E-Ring	---
17	Heating Element Assembly (Qty. 8)	X02.09.273.00
18	Power Cord and Plug	02.18.259.00
19	Rubber Foot (Qty. 4)	X05.30.116.00

PARTS SPECIFIC TO MODEL TPT-240

Item	Description	240V
9	Plunger, Solenoid (Qty. 2)	X02.20.344.00
10	Carriage Handle Assembly (Qty. 2)	X04.05.548.00
11	Damper Assembly	X04.05.550.00
12	Potentiometer, Color Control (Qty. 2)	X02.13.335.00
13	Crumb Tray Assembly	X04.05.549.00
14	Printed Circuit Board (Qty. 2)	X02.01.258.00
15	Screw	X05.04.561.00
16	E-Ring	---
17	Heating Element Assembly (Qty. 8)	X02.09.274.00
18	Power Cord and Plug	02.18.036.00
19	Rubber Foot (Qty. 4)	X05.30.116.00

PARTS SPECIFIC TO MODEL TPT-230-4

Item	Description	230V (CE)
9	Plunger, Solenoid (Qty. 2)	X02.20.344.00
10	Carriage Handle Assembly (Qty. 2)	X04.05.548.00
11	Damper Assembly	X04.05.550.00
12	Potentiometer, Color Control (Qty. 2)	X02.13.335.00
13	Crumb Tray Assembly	X04.05.549.00
14	Printed Circuit Board (Qty. 2)	X02.01.282.00
15	Screw	X05.04.561.00
16	E-Ring	---
17	Heating Element Assembly (Qty. 8)	X02.09.274.00
18	Power Cord and Plug	02.18.038.00
19	Rubber Foot (Qty. 4)	X05.30.116.00

Shaded area contains information for **Export models only**.